

WAAS CH 42632 W35A	APP CRS 352°	Rwy Idg TDZE Apt Elev	4809 3641 3649
--	------------------------	-----------------------------	---

RNAV (GPS) RWY 35

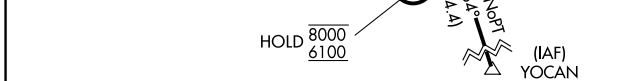
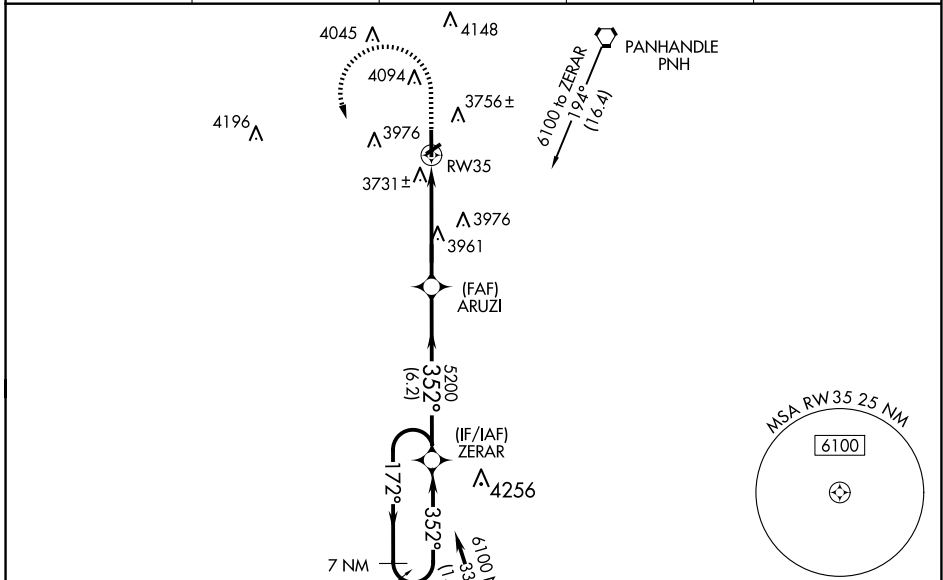
TRADEWIND (TDW)

RNP APCH-GPS.

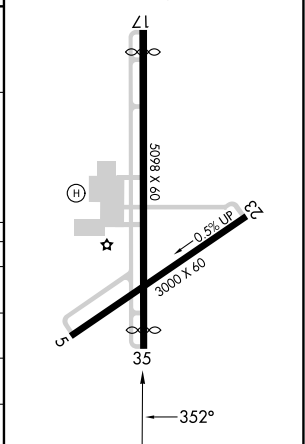
NA Procedure NA at night. Rwy 35 helicopter visibility reduction below 1 SM NA. Baro-VNAV NA. Use Rick Husband Amarillo Intl altimeter setting; when not received, use Hereford altimeter setting; increase LPV DA to 3983 feet, LNAV/VNAV DA to 4108 feet, and all MDAs 80 feet, and increase LNAV/VNAV all Cats and Circling Cat B visibility 1/4 SM.

MISSED APPROACH: Climb to 4100 then climbing left turn to 6100 direct ZERAR and hold, continue climb-in-hold to 6100.

AWOS-AV 118.475	AMA ASOS 118.85 350.3	AMARILLO APP CON * 119.5 307.0	CLNC DEL 125.4	UNICOM 122.8 (CTAF) 0
---------------------------	---------------------------------	--	--------------------------	---------------------------------



ELEV 3649	TDZE 3641
MRL Rwy 5-23 and 17-35 0	
REIL Rwy 17 and 35 0	



CATEGORY	A	B	C	D
LPV DA	3913-1	272 (300-1)		NA
LNAV/VNAV DA	4038-1 1/8	397 (400-1 1/8)		NA
LNAV MDA	4300-1	659 (700-1)		NA
CIRCLING	4300-1 651 (700-1)	4420-1 771 (800-1)		NA

SC-2, 11 JUN 2026 to 09 JUL 2026

SC-2, 11 JUN 2026 to 09 JUL 2026