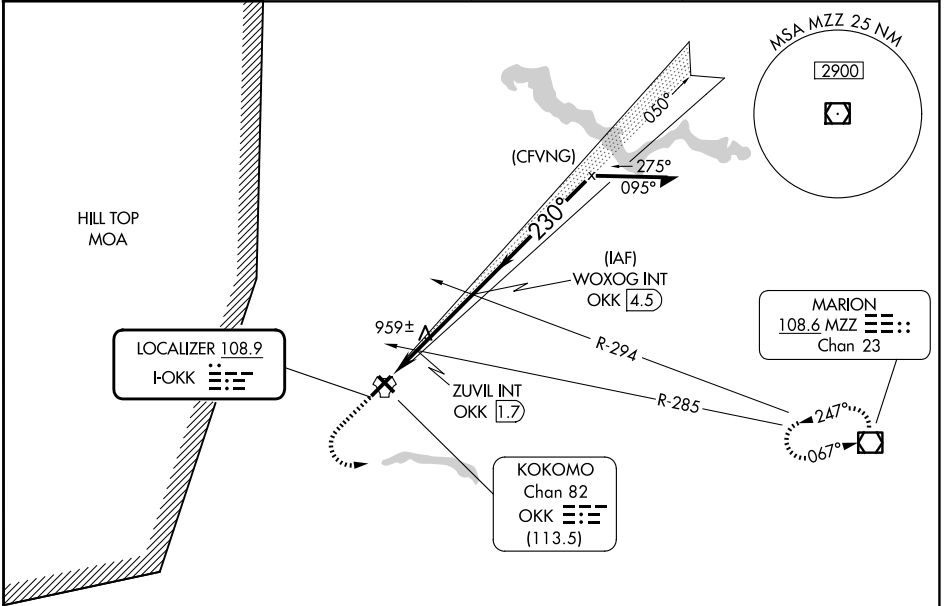


LOC I-OKK 108.9	APP CRS 230°	Rwy Ldg TDZE 6001 827	Apt Elev 832
---------------------------	------------------------	---------------------------------	------------------------

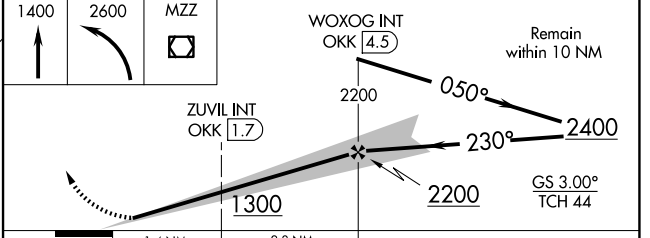
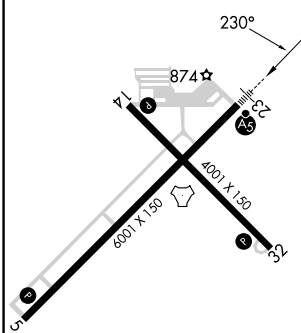
ILS or LOC RWY 23

KOKOMO MUNI (OKK)

RADAR required for procedure entry.		MALSR 	MISSED APPROACH: Climb to 1400 then climbing left turn to 2600 direct MZZ VOR/DME and hold.
▽ For inop ALS, increase S-LOC 23 Cat C/D visibility to 1½ SM. ▲ NA * DME from OKK			
AWOS-3PT 128.675	GRISSOM APP CON* 121.05 338.275	CLNC DEL 120.0	UNICOM 123.0 (CTAF) 0



ELEV 832	TDZE 827
----------	----------



CATEGORY	A	B	C	D
S-ILS 23	1027-½ 200 (200-½)			
S-LOC 23	1300-½	473 (500-½)	1300-1	473 (500-1)
CIRCLING	1300-1	468 (500-1)	1400-1½ 568 (600-1½)	1420-2 588 (600-2)
ZUVIL FIX MINIMUMS* (DUAL VOR RECEIVERS or DME REQUIRED)				
S-LOC 23	1220-½	393 (400-½)	1220-¾	393 (400-¾)
CIRCLING	1260-1 428 (500-1)	1300-1 468 (500-1)	1400-1½ 568 (600-1½)	1420-2 588 (600-2)

HIRL Rwy 5-23 0
MIRL Rwy 14-32 0
REIL Rws 5, 14, and 32 0

FAF to MAP 4.2 NM

Knots	60	90	120	150	180
Min:Sec	4:12	2:48	2:06	1:41	1:24

EC-2, 11 JUN 2026 to 09 JUL 2026

EC-2, 11 JUN 2026 to 09 JUL 2026