

WAAS CH 45907 W18A	APP CRS 183°	Rwy Ldg TDZE 663 Apt Elev 663	5001
--	------------------------	---	-------------

RNAV (GPS) RWY 18

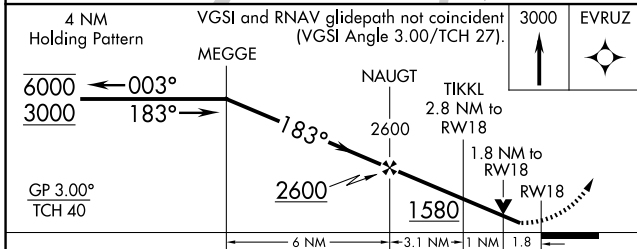
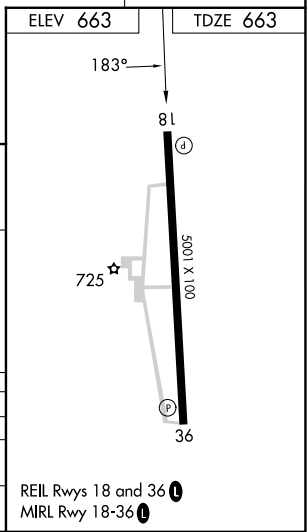
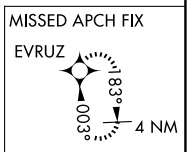
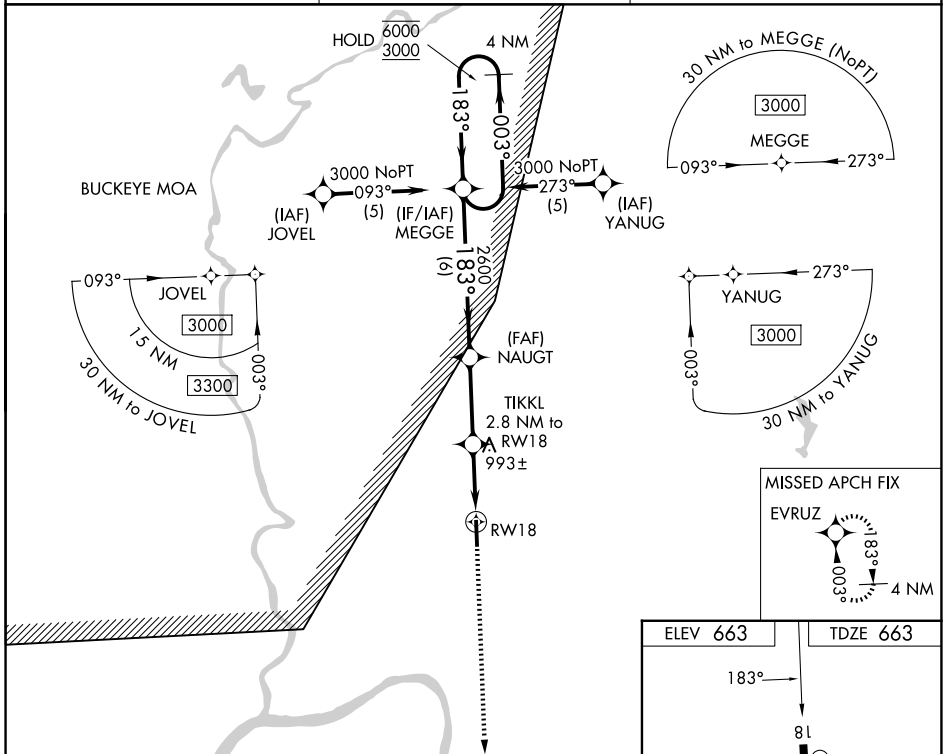
GREATER PORTSMOUTH RGNL (PMH)

RNP APCH - GPS.

⚠ VDP NA when using JRO altimeter setting. Rwy 18 helicopter visibility reduction below 3/4 SM NA.
⚠ When local altimeter setting not received, use JRO altimeter setting and increase LPV DA to 1053 feet and all visibilities 1/2 SM. Increase all MDA 100 feet and LNAV visibility Cat C/D 1/2 SM, and Circling visibility Cat B/C 1/4 SM.

MISSED APPROACH:
Climb to 3000 direct EVRUZ and hold.

AWOS-3PT 125,175	HUNTINGTON APP CON 128.4 270.1	UNICOM 122.8 (CTAF) ①
----------------------------	--	---------------------------------



CATEGORY	A	B	C	D
LPV DA	1010-1		347 (400-1)	
LNAV MDA	1260-1 597 (600-1)		1260-1 3/4 597 (600-1 3/4)	
CIRCLING	1360-1 697 (700-1)	1460-1 797 (800-1)	1460-2 1/4 797 (800-2 1/4)	1560-3 897 (900-3)

EC-2, 11 JUN 2026 to 09 JUL 2026

EC-2, 11 JUN 2026 to 09 JUL 2026