

APP CRS	Rwy Ldg	<b>4558</b>
<b>074°</b>	TDZE	<b>810</b>
	Apt Elev	<b>813</b>

# RNAV (GPS) RWY 7

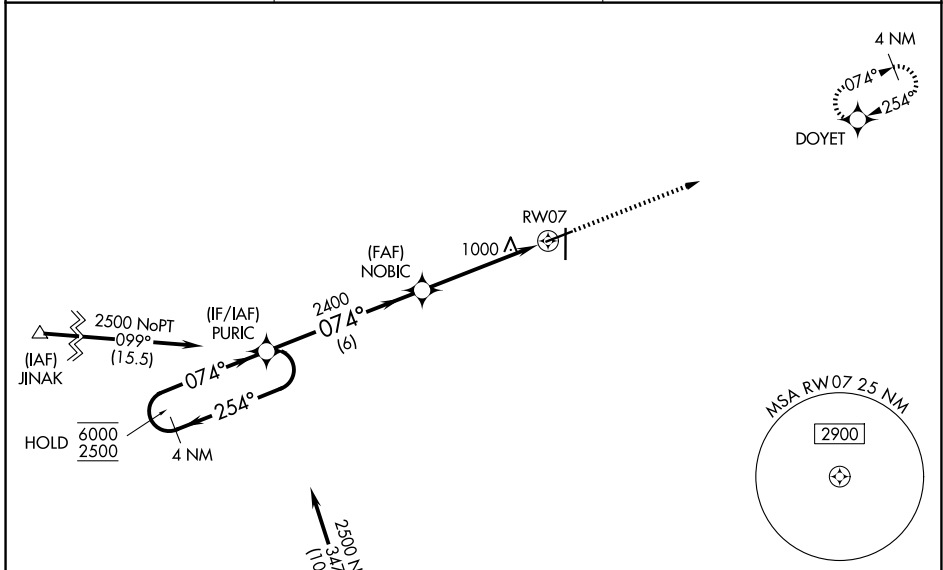
FINDLAY (F'DY)

RNP APCH - GPS.

**⚠** Baro-VNAV and VDP NA when using Lima Allen County altimeter setting. Rwy 7 helicopter visibility reduction below 3/4 SM NA. For uncompensated Baro-VNAV systems, LNAV/VNAV NA below -16°C or above 54°C. When local altimeter setting not received, use Lima altimeter setting and increase LNAV/VNAV DA to 1391 feet and all visibilities 3/8 SM. Increase all MDAs 80 feet and LNAV visibility Cat C/D 1/8 SM, and Circling visibility Cat C/D 1/4 SM. Straight-In Rwy 7 NA at night, Circling Rwy 7 NA at night.

**MISSED APPROACH:**  
Climb to 2500 direct DOYET and hold.

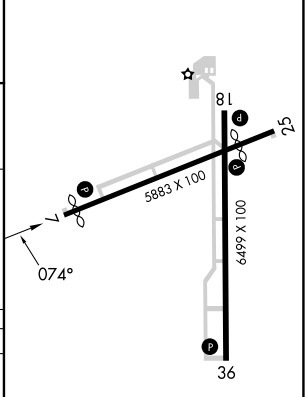
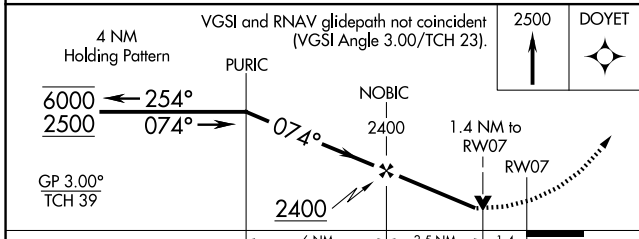
ASOS <b>132.85</b>	TOLEDO APP CON <b>120.8 317.55</b>	UNICOM <b>122.725 (CTAF) 0</b>
-----------------------	---------------------------------------	-----------------------------------



Procedure NA for arrivals at KINDE on V47 southbound.

(IAF) KINDE, 2500 NoPT (3AT), 101A.

ELEV 813	<b>D</b> TDZE 810
----------	-------------------



CATEGORY	A	B	C	D
LNAV/VNAV DA	1311-13/4		501 (500-13/4)	
LNAV MDA	1260-1	450 (500-1)	1260-13/8	450 (500-13/8)
CIRCLING	1440-1	627 (700-1)	1440-13/4	1540-21/4
			627 (700-13/4)	727 (800-21/4)

MIRA Rwy 7-25  
HIRL Rwy 18-36  
REIL Rws 7, 25 and 36

EC-2, 11 JUN 2026 to 09 JUL 2026

EC-2, 11 JUN 2026 to 09 JUL 2026