

LOC/DME I-UKI	APP CRS	Rwy Ldg TDZE	<b>4423</b>
<b>109.1</b>	<b>155°</b>	617	
Chan <b>28</b>		Apt Elev	<b>617</b>

# LOC RWY 15

UKIAH MUNI (UKI)

DME required.

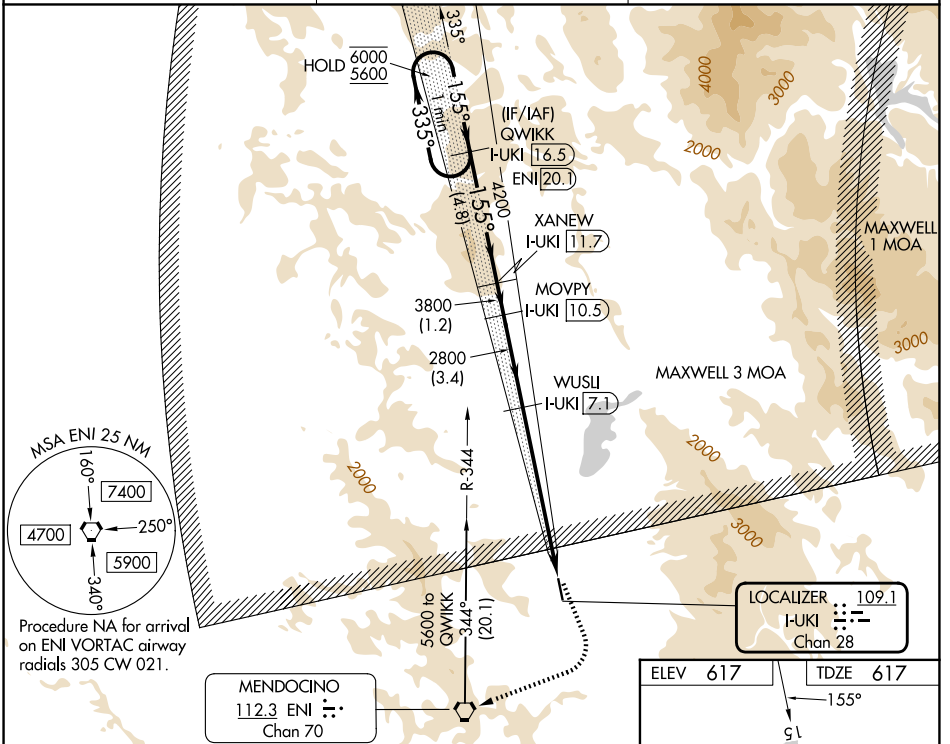
**▼** Circling NA southwest of Rwy 15-33. Circling Rwy 33 NA at night. Rwy 15 helicopter visibility reduction below 3/4 SM NA. When local altimeter setting not received, procedure NA.

**MISSED APPROACH:** Climbing left turn to 4100 on heading 145° then climbing right turn to 5600 direct ENI VORTAC and on ENI VORTAC R-344 to QWIKK /I-UKI 16.5 DME and hold.

ASOS  
**119.275**

OAKLAND CENTER  
**127.8 353.5**

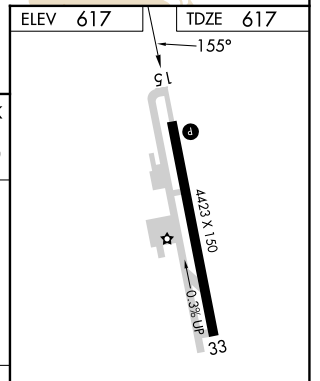
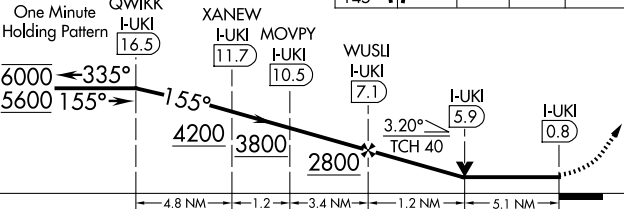
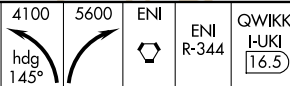
UNICOM  
**123.0 (CTAF) 0**



SW-2, 11 JUN 2026 to 09 JUL 2026

SW-2, 11 JUN 2026 to 09 JUL 2026

VGSI and descent angles not coincident (VGSI Angle 3.00/TCH 29).



CATEGORY	A	B	C	D
S-LOC 15	2300-1¼ 1683 (1700-1¼)	2300-1½ 1683 (1700-1½)	2300-3	1683 (1700-3)
CIRCLING	2300-1¼ 1683 (1700-1¼)	2300-1½ 1683 (1700-1½)	2300-3 1683 (1700-3)	2780-3 2163 (2200-3)

MIRL Rwy 15-33 0

REIL Rws 15 and 33 0

FAF to MAP 6.3 NM

Knots	60	90	120	150	180
Min:Sec	6:18	4:12	3:09	2:31	2:06