

LOC I-LEX <b>110.1</b>	APP CRS <b>046°</b>	Rwy Ldg <b>7004</b>
		TDZE <b>969</b>
		Apt Elev <b>980</b>

# ILS or LOC RWY 4

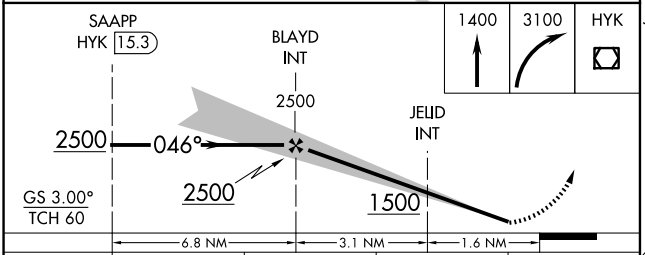
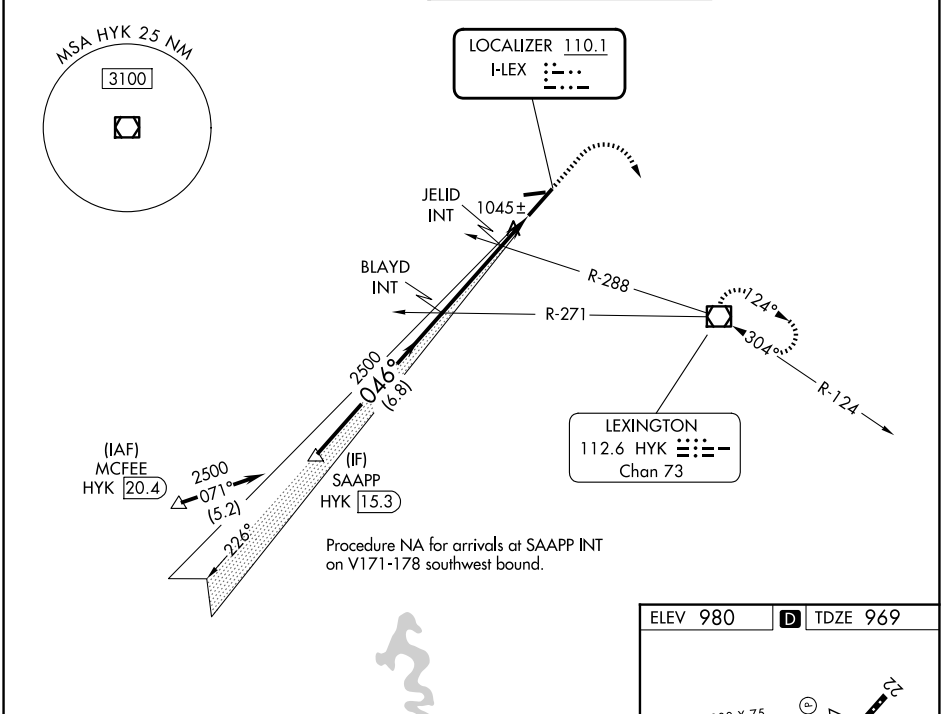
BLUE GRASS (LEX)

DME required for procedure entry.

▼ When local altimeter setting not received, use FFT altimeter setting:  
 ▲ increase S-ILS 4 DA to 1231 feet and all visibilities to RVR 4500; increase all MDAs 80 feet and Circling visibility Cats C and D¼ SM.

MISSED APPROACH: Climb to 1400 then climbing right turn to 3100 direct HYK VOR/DME and hold, continue climb-in-hold to 3100.

ATIS <b>126.3</b>	LEXINGTON APP CON <b>120.15 259.3</b> (040°-220°) <b>120.75 298.9</b> (221°-039°)	LEXINGTON TOWER <b>119.1 257.8</b>	GND CON <b>121.9</b>
----------------------	---	---------------------------------------	-------------------------



ELEV 980	TDZE 969
TDZL/RCLS Rwy 4 REIL Rwys 9, 22 and 27 HIRL Rwy 4-22 MIRL Rwy 9-27	
FAF to MAP 4.7 NM	
Knots	60 90 120 150 180
Min:Sec	4:42 3:08 2:21 1:53 1:34

CATEGORY	A	B	C	D
S-ILS 4		1169/40	200 (200-¾)	
S-LOC 4		1340/55	371 (400-1)	
CIRCLING	1440-1	460 (500-1)	1520-1½ 540 (600-1½)	1600-2 620 (700-2)

SE-1, 11 JUN 2026 to 09 JUL 2026

SE-1, 11 JUN 2026 to 09 JUL 2026