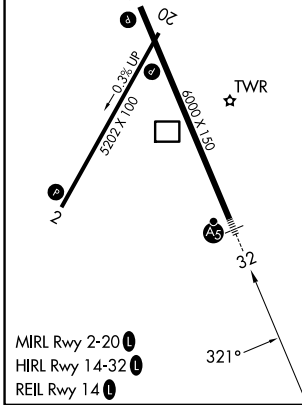
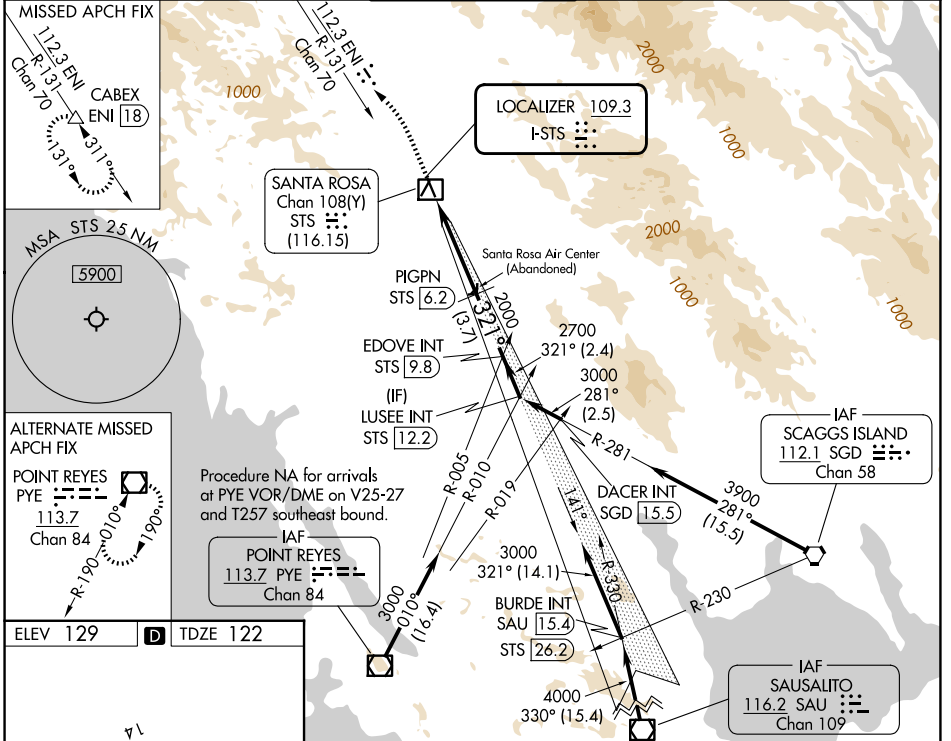


LOC I-STS 109.3	APP CRS 321°	Rwy Ldg TDZE Apt Elev	6000 122 129
---------------------------	------------------------	-----------------------------	---

ILS or LOC RWY 32
CHARLES M SCHULZ/SONOMA COUNTY (STS)

DME required.		Autopilot coupled approach NA below 1286. DME from STS DME. DME use requires simultaneous reception of I-STS and STS DME. For inop ALS increase S-ILS 32 visibility all Cats to RVR 4500, S-LOC 32 Cats A/B to RVR 5500.		MALSR 	MISSED APPROACH: Climb to 1020 then climb to 6000 on ENI VORTAC R-131 to CABEX/ENI VORTAC 18 DME and hold, continue climb-in-hold to 6000.
ATIS 120.55	OAKLAND CENTER 127.8 353.5	SANTA ROSA TOWER* 118.5 (CTAF) 363.0	GND CON 121.9	UNICOM 122.95	



ELEV 129	D	TDZE 122		
1020	6000	CABEX		
↑	↑	△		
ENI R-131				
STS 0.4	PIGPIN STS 6.2	EDOVE INT STS 9.8		
2000	2000	3000		
321°				
5.7 NM	3.7 NM	2.4 NM		
GS 3.00°	TCH 53			
CATEGORY	A	B	C	D
S-ILS 32	377/24 255 (300-½)			
S-LOC 32	580/24	458 (500-½)	580/45	458 (500-¾)
CIRCLING	600-1 471 (500-1)	680-1 551 (600-1)	1080-3 951 (1000-3)	1420-3 1291 (1300-3)

SW-2, 11 JUN 2026 to 09 JUL 2026

SW-2, 11 JUN 2026 to 09 JUL 2026