

# ILS or LOC RWY 28

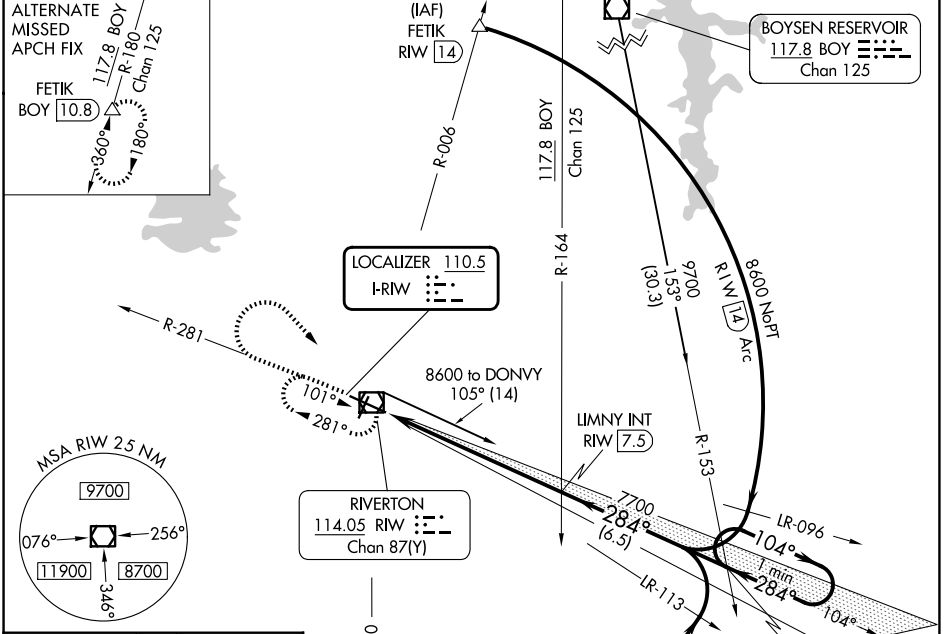
CENTRAL WYOMING RGNL (RIW)

LOC I-RIW <b>110.5</b>	APP CRS <b>284°</b>	Rwy Ldg TDZE <b>8204</b> <b>5459</b>	Apt Elev <b>5516</b>
---------------------------	------------------------	--------------------------------------------	-------------------------

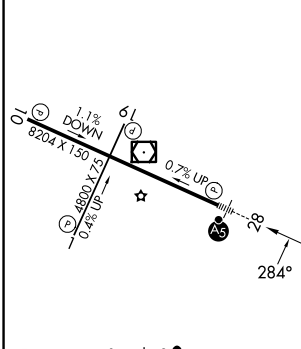
**NA** When local altimeter setting not received, use Lander altimeter setting: increase DA to 5713 feet; increase all MDA 60 feet and S-LOC 28 Cat C and D visibility ¼ mile. For inop MALSRL, when using Lander altimeter setting, increase S-ILS 28 all Cats visibility to 7/8 mile and S-LOC 28 Cat C and D visibility to 1 3/8 mile. VDP NA when using Lander altimeter setting.

**MALSRL** MISSED APPROACH: Climb to 6800 then climbing right turn to 7700 direct RIW VOR/DME and hold, continue climb-in-hold to 7700.

ASOS <b>121.425</b>	SALT LAKE CENTER <b>133.25 285.6</b>	UNICOM <b>122.8 (CTAF)</b>
------------------------	-----------------------------------------	-------------------------------



ELEV 5516	<b>D</b>	TDZE 5459
-----------	----------	-----------



REIL Rwy's 1, 10 and 19  
 MIRL Rwy 1-19  
 HIRL Rwy 10-28

FAF to MAP 6.9 NM

Knots	60	90	120	150	180
Min:Sec	6:54	4:36	3:27	2:46	2:18

	6800	7700	RIW	LIMNY INT RIW 7.5	DONVY INT RIW 14	One Minute Holding Pattern
CATEGORY	A	B	C	D		
S-ILS 28	5659-½		200 (200-½)			
S-LOC 28	5880-½ 421 (400-½)		5880-¾ 421 (400-¾)			
CIRCLING	6000-1 484 (500-1)		6000-1½ 484 (500-1½)		6120-2 604 (700-2)	

NW-1, 11 JUN 2026 to 09 JUL 2026

NW-1, 11 JUN 2026 to 09 JUL 2026