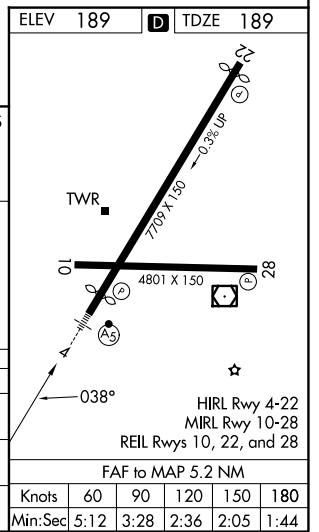
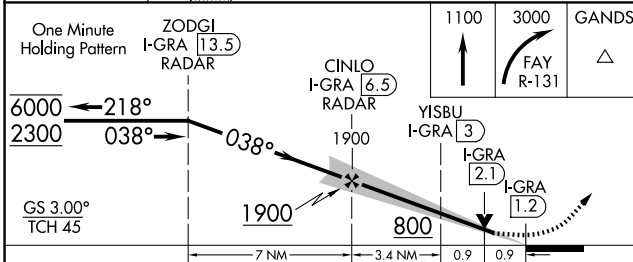
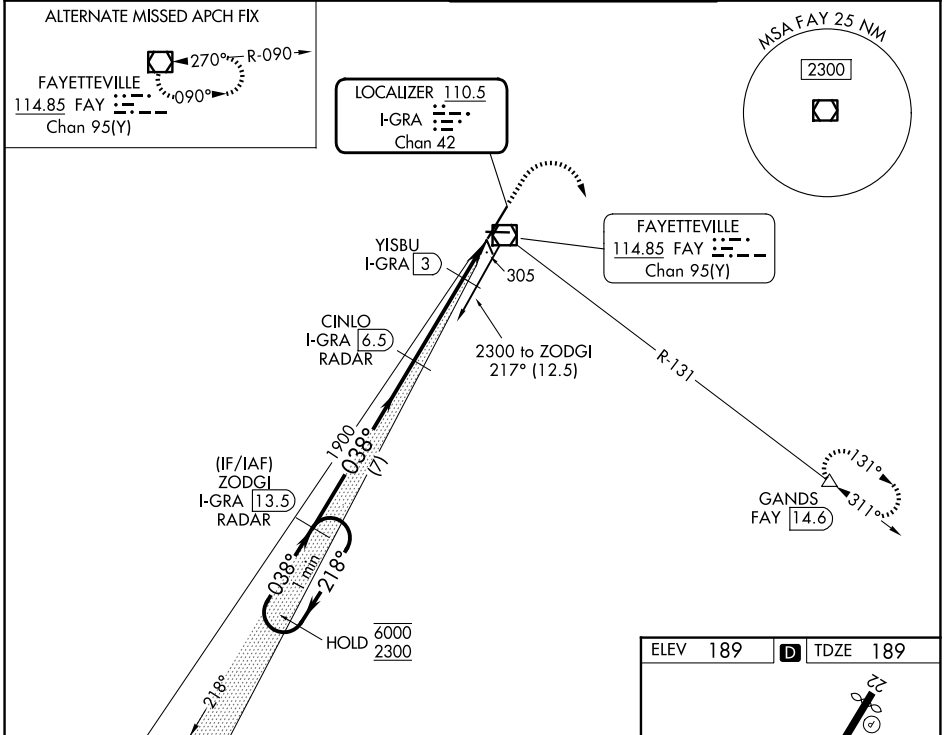


LOC/DME I- <b>GRA</b>	APP CRS	Rwy Ldg	<b>6408</b>
<b>110.5</b>	<b>038°</b>	TDZE	<b>189</b>
Chan <b>42</b>		Apt Elev	<b>189</b>

# ILS or LOC RWY 4

FAYETTEVILLE RGNL/GRANNIS FLD (FAY)

DME required.		MALSR	MISSED APPROACH: Climb to 1100 then climbing right turn to 3000 on FAY VOR/DME R-131 to GANDS/FAY 14.6 DME and hold.
* RVR 1800 authorized with use of FD or AP or HUD to DA.			
ATIS <b>121.25</b>	FAYETTEVILLE APP CON <b>133.0 290.25</b>	FAYETTEVILLE TOWER <b>118.3 269.2</b>	GND CON <b>121.7 348.6</b>



CATEGORY	A	B	C	D
S-ILS 4*	389/24		200 (200-½)	
S-LOC 4	520/24	331 (400-½)	520/26	331 (400-½)
CIRCLING	640-1 451 (500-1)	660-1 471 (500-1)	860-2 671 (700-2)	860-2¼ 671 (700-2¼)

SE-2, 11 JUN 2026 to 09 JUL 2026

SE-2, 11 JUN 2026 to 09 JUL 2026

ELEV	189	TDZE	189		
Knots	60	90	120	150	180
Min:Sec	5:12	3:28	2:36	2:05	1:44