

| | | |
|--|------------------------|---|
| LOC/DME I-GLD 108.9 Chan 26 | APP CRS 305° | Rwy Ldg 5499 TDZE 3653 Apt Elev 3658 |
|--|------------------------|---|

ILS or LOC RWY 30
RENNER FLD/GOODLAND MUNI (GLD)

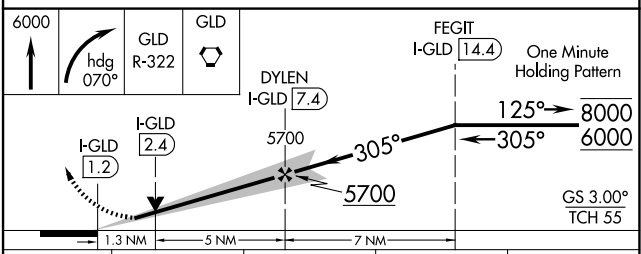
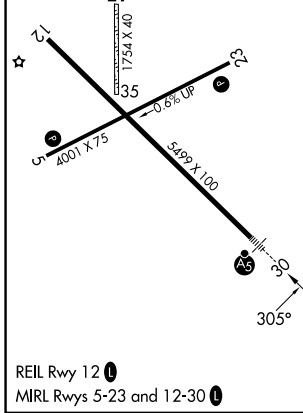
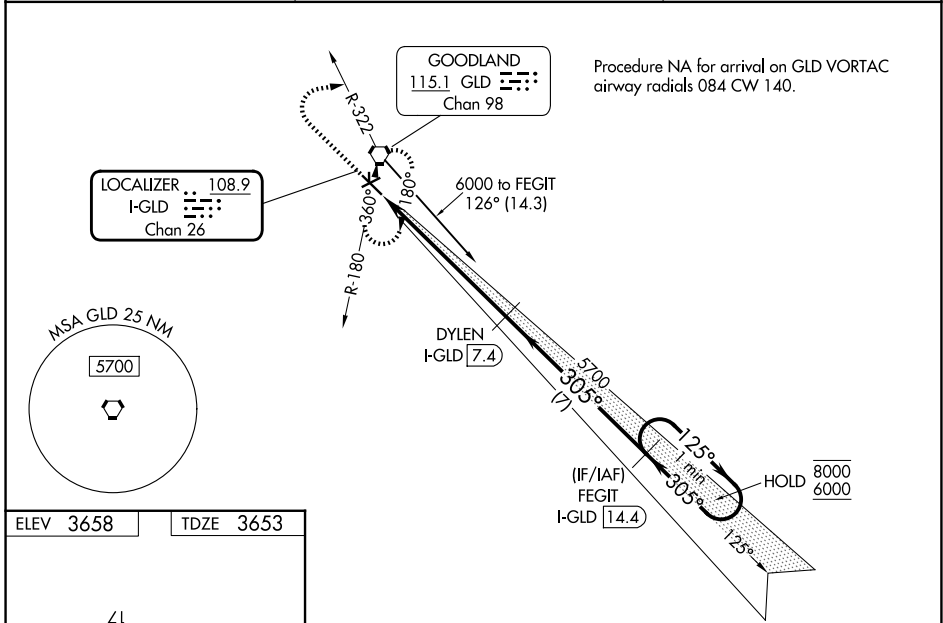
DME required.

⚠ VDP NA when using ITR altimeter setting. Circling Rwy 5 NA at night. Circling NA south of Rwy 5 and 30. Circling NA to Rwy 17 and 35. Rwy 30 helicopter visibility reduction below 3/4 SM NA. When local altimeter setting not received, use ITR altimeter setting: increase S-ILS 30 to DA 4043 feet; increase all MDAs 140 feet and S-LOC 30 Cat C and D visibility 3/8 SM, and Circling Cat C and D visibility 1/4 SM. For inop ALS, increase S-LOC 30 Cat C and D visibility to 1/2 SM. For inop ALS when using ITR altimeter setting, increase S-ILS 30 all Cats visibility to 1/2 SM, and S-LOC 30 Cat C and D visibility to 1/2 SM. Inop table does not apply to S-ILS 30 all Cats and S-LOC 30 Cats A and B.

MALS

MISSED APPROACH: Climb to 6000 then right turn on heading 070° and GLD VORTAC R-322 to GLD VORTAC and hold.

| | | |
|------------------------|---------------------------------------|---------------------------------|
| ASOS 121.025 | DENVER CENTER 132.7 226.675 | UNICOM 122.8 (CTAF) 1 |
|------------------------|---------------------------------------|---------------------------------|



| CATEGORY | A | B | C | D |
|----------|--------------------|-------------|-------------------------------|-----------------------|
| S-ILS 30 | 3903-1 250 (300-1) | | | |
| S-LOC 30 | 4120-1 467 (500-1) | | | |
| CIRCLING | 4120-1 | 462 (500-1) | 4120-1 1/2 462 (500-1 1/2) | 4240-2 582 (600-2) |

NC-2, 11 JUN 2026 to 09 JUL 2026

NC-2, 11 JUN 2026 to 09 JUL 2026