

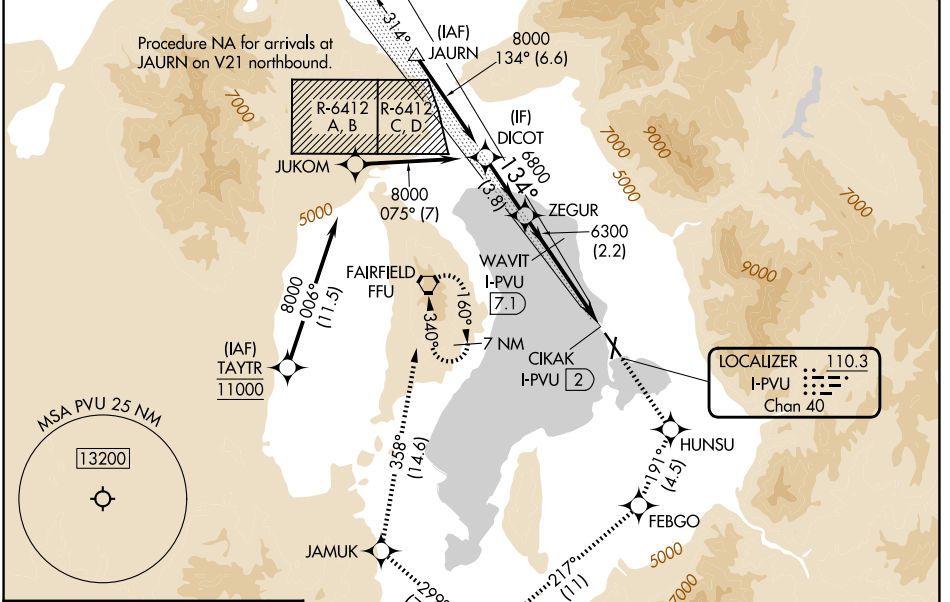
LOC/DME I-PVU <b>110.3</b> Chan <b>40</b>	APP CRS <b>134°</b>	Rwy Ldg <b>8599</b> TDZE <b>4497</b> Apt Elev <b>4497</b>
---	------------------------	---

# ILS or LOC RWY 13

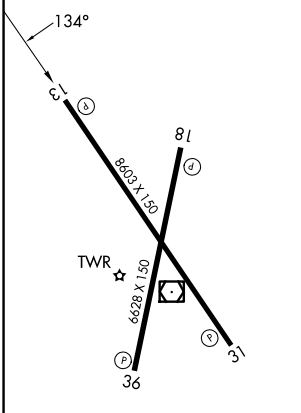
PROVO MUNI (PVU)

RNP APCH - GPS.	MISSED APPROACH: Climb to 9000 direct HUNSU and on track 191° to FEBGO and on track 217° to ZARAK and on track 299° to JAMUK and on track 358° to FFU VORTAC and hold. *Missed approach requires minimum climb of 215 feet per NM to 7760.
<p>▼ Rwy 13 helicopter visibility reduction below 3/4 SM NA.</p> <p>▲ Circling Rwy 18, 36 NA at night. When local altimeter setting not received, procedure NA. Circling NA east of Rwy 18 and 31.</p>	

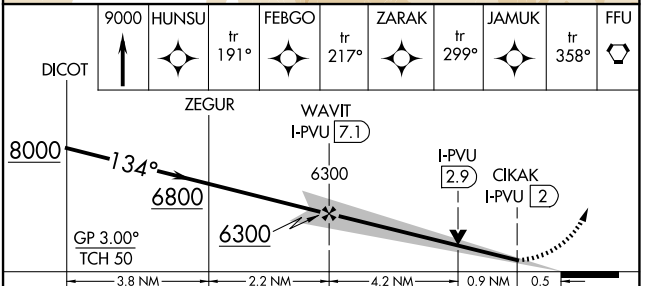
ATIS <b>135.175</b>	SALT LAKE CITY APP CON <b>118.85 233.7</b>	PROVO TOWER * <b>125.3 (CTAF)</b>	GND CON <b>119.4</b>
------------------------	---	--------------------------------------	-------------------------



ELEV 4497	<b>D</b>	TDZE 4497
-----------	----------	-----------



REIL Rwy 13  
HIRL Rwy 13-31  
MIRL Rwy 18-36



CATEGORY	A	B	C	D
S-ILS 13*	4756-3/4 259 (300-3/4)			
S-ILS 13	4925-1 1/4 428 (500-1 1/4)			
S-LOC 13	4980-1	483 (500-1)	4980-1 3/8	483 (500-1 3/8)
CIRCLING	4980-1	483 (500-1)	5160-1 3/4	5280-2 1/2
			663 (700-1 3/4)	783 (800-2 1/2)

SW-4, 11 JUN 2026 to 09 JUL 2026

SW-4, 11 JUN 2026 to 09 JUL 2026