

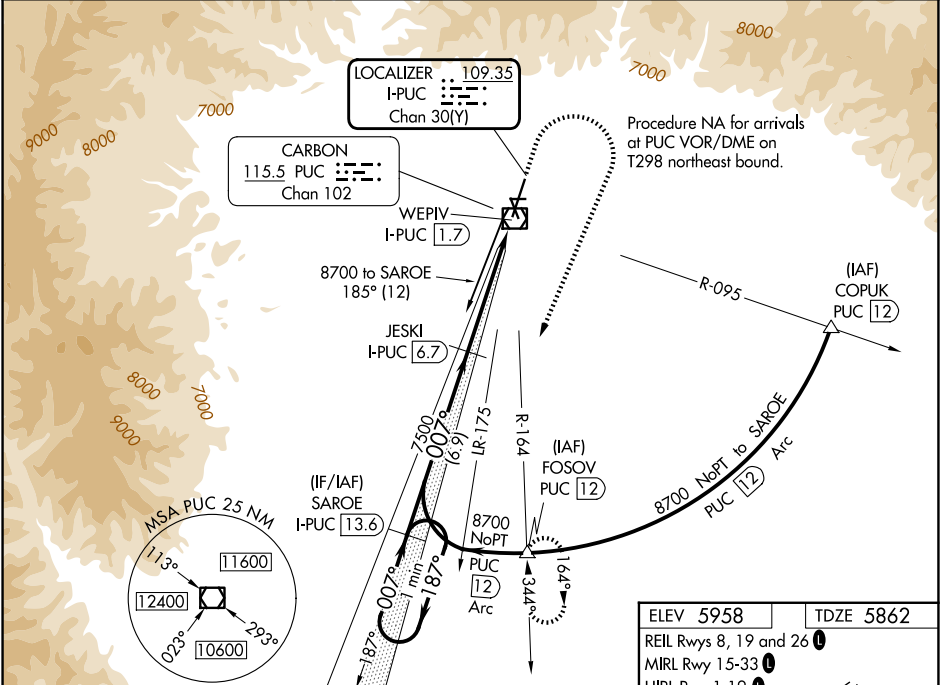
| | | |
|--|------------------------|---|
| LOC/DME I-PUC 109.35 Chan 30(Y) | APP CRS 007° | Rwy Ldg TDZE 8316 5862 Apt Elev 5958 |
|--|------------------------|---|

ILS or LOC RWY 1

CARBON COUNTY RGNL/BUCK DAVIS FLD (PUC)

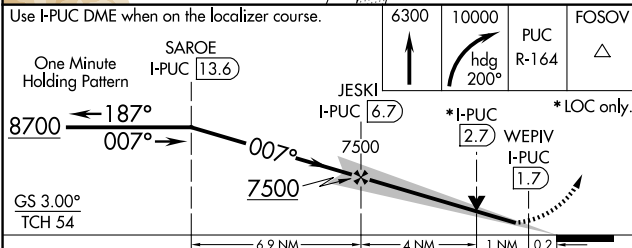
| | | | |
|---|--|-----------|--|
| DME required for procedure entry. DME required. | | MALSF | MISSED APPROACH: Climb to 6300 then climbing right turn to 10000 on heading 200° and on PUC VOR/DME R-164 to FOSOV/PUC 12 DME and hold, continue climb-in-hold to 10000. #Missed approach requires minimum climb of 339 feet per NM to 7100. |
| Circling NA at night. For inoperative ALS, increase S-ILS 1 all Cats visibility to 7/8 SM. Inoperative table does not apply to S-ILS 1# all Cats. | | | |

| | | |
|------------------------|---|---------------------------------|
| ASOS 135.425 | SALT LAKE CENTER 133.9 370.85 | UNICOM 122.8 (CTAF) 0 |
|------------------------|---|---------------------------------|

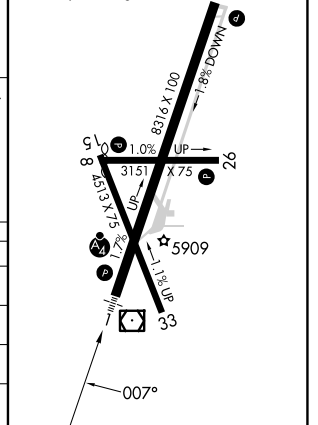


SW-4, 11 JUN 2026 to 09 JUL 2026

SW-4, 11 JUN 2026 to 09 JUL 2026



| | |
|------------------------|-----------|
| ELEV 5958 | TDZE 5862 |
| REIL Rwys 8, 19 and 26 | |
| MIRL Rwy 15-33 | |
| HIRL Rwy 1-19 | |



| CATEGORY | A | B | C | D |
|----------|-----------------------|--------------------------------|-------------------------|----|
| S-ILS 1# | | 6062-3/4 | 200 (200-3/4) | |
| S-ILS 1 | | 6127-3/4 | 265 (200-3/4) | |
| S-LOC 1 | | 6240-3/4 | 378 (300-3/4) | |
| CIRCLING | 6660-1 702 (800-1) | 6860-1 1/4 902 (1000-1 1/4) | 7120-3 1162 (1200-3) | NA |

ILS or LOC RWY 1