

WAAS CH 53320 W09A	APP CRS 092°	Rwy Ldg TDZE 34 Apt Elev 48
--	------------------------	---

RNAV (GPS) RWY 9

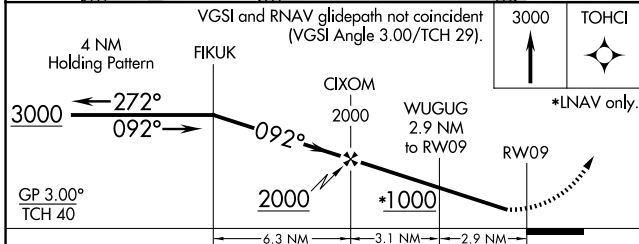
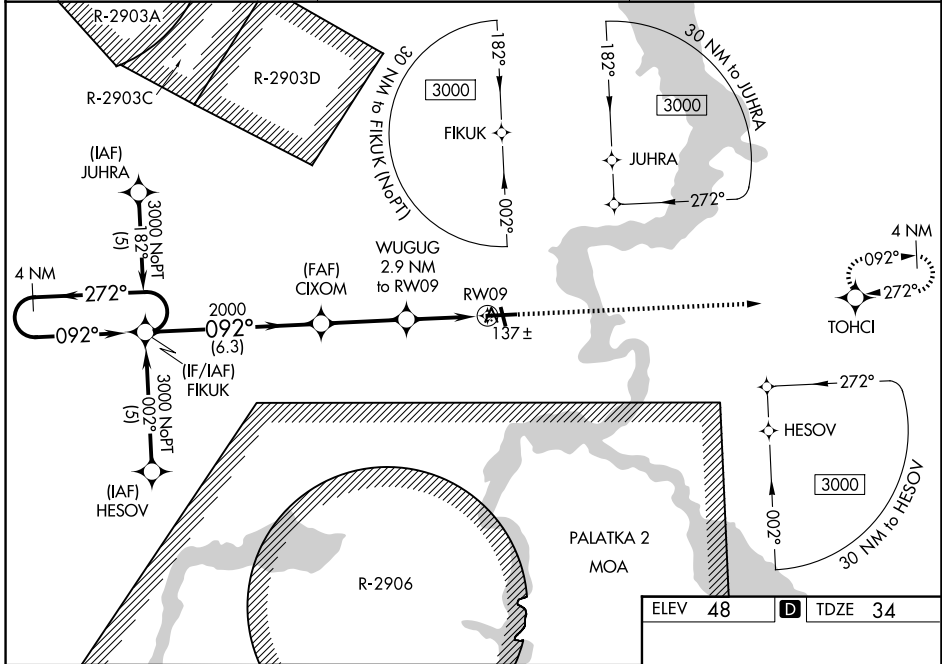
PALATKA MUNI/LT KAY LARKIN FLD (28J)

RNP APCH.

Baro-VNAV NA when using St Augustine altimeter setting. For uncompensated Baro-VNAV systems, LNAV/VNAV NA below -15°C (5°F) or above 49°C (120°F). Rwy 9 helicopter visibility reduction below ¾ SM NA. When local altimeter setting not received, use St Augustine altimeter setting and increase LPV DA all Cats to 379 feet, LNAV/VNAV DA all Cats to 457 feet, and all MDA 80 feet; increase LPV all Cats and LNAV Cats C/D visibility ¼ SM, and LNAV/VNAV all Cats and Circling Cat C/D visibility ¼ SM. Circling Rwy 17, 35 NA at night.

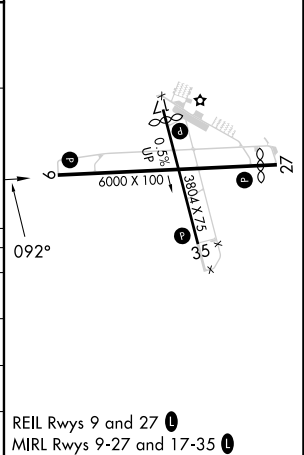
MISSED APPROACH: Climb to 3000 direct TOHCl and hold.

AWOS-3 119.925	JACKSONVILLE APP CON 118.175 338.25	UNICOM 122.8 (CTAF) 0
---------------------------------	--	--



ELEV 48	D TDZE 34
----------------	-------------------------

CATEGORY	A	B	C	D
LPV DA		314-1	280 (300-1)	
LNAV/VNAV DA		392-1¼	358 (400-1¼)	
LNAV MDA	480-1 446 (500-1)		480-1¾ 446 (500-1¾)	480-1½ 446 (500-1½)
CIRCLING	620-1 572 (600-1)		700-1¾ 652 (700-1¾)	700-2 652 (700-2)



SE-3, 11 JUN 2026 to 09 JUL 2026

SE-3, 11 JUN 2026 to 09 JUL 2026