

LOC/DME I-CUA 110.1 Chan 38	APP CRS 014°	Rwy Ldg TDZE 8402 2176 Apt Elev 2181
---	------------------------	---

ILS or LOC RWY 1L

HARRY REID INTL (LAS)

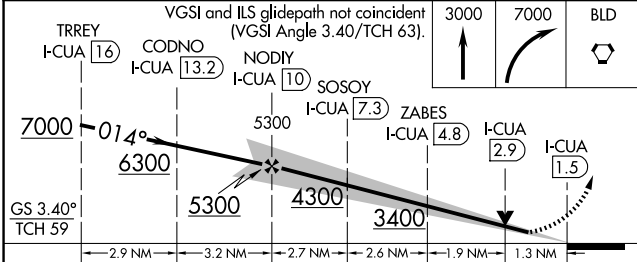
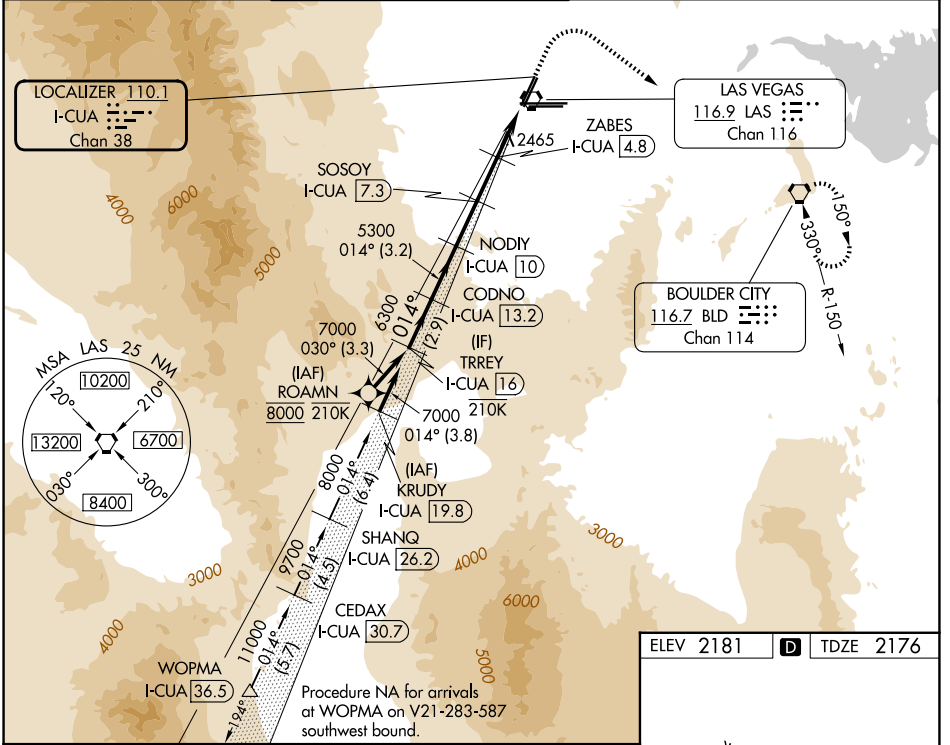
DME required. RNP APCH-GPS. From ROAMN.

▼ Rwy 1L helicopter visibility reduction below 3/4 SM NA.
▲ For inop ALS, increase S-ILS 1L all Cats visibility to 7/8 SM.

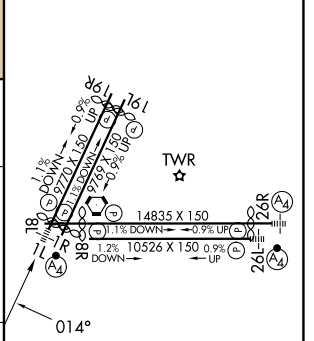
MALSF

MISSED APPROACH: Climb to 3000 then climbing right turn to 7000 direct BLD VORTAC and hold, continue climb-in-hold to 7000.

D-ATIS 132.4	LAS VEGAS APP CON 125.025 379.15 (West) 119.775 282.2 (East)	LAS VEGAS TOWER 118.75 257.8 (Rwy 1L/19R, 1R/19L) 119.9 257.8 (Rwy 8L/26R, 8R/26L)	GND CON 121.1 270.8 E of 1R/19L 121.9 254.3 W of 1L/19R	CLNC DEL 118.0	CPDLC
------------------------	--	--	---	--------------------------	-------



ELEV 2181	D	TDZE 2176
-----------	----------	-----------



CATEGORY	A	B	C	D
S-ILS 1L	2460-3/4 284 (300-3/4)			
S-LOC 1L	2720-3/4 544 (600-3/4)	2720-1 544 (600-1 1/2)		
CIRCLING	3020-1 1/4 839 (900-1 1/4)	3060-1 1/4 879 (900-1 1/4)	3100-2 3/4 919 (1000-2 3/4)	3540-3 1359 (1400-3)

MRL Rwy 1R-19L
REIL Rws 1R, 8R, 19L and 19R
HIRL Rws 1L-19R, 8L-26R and 8R-26L

SW-4, 11 JUN 2026 to 09 JUL 2026

SW-4, 11 JUN 2026 to 09 JUL 2026