

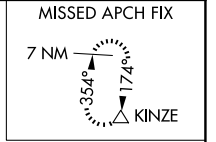
WAAS CH <b>53709</b> <b>W07A</b>	APP CRS <b>071°</b>	Rwy Idg TDZE Apt Elev	<b>5371</b> <b>3702</b> <b>3732</b>
--	------------------------	-----------------------------	---

# RNAV (GPS) RWY 7

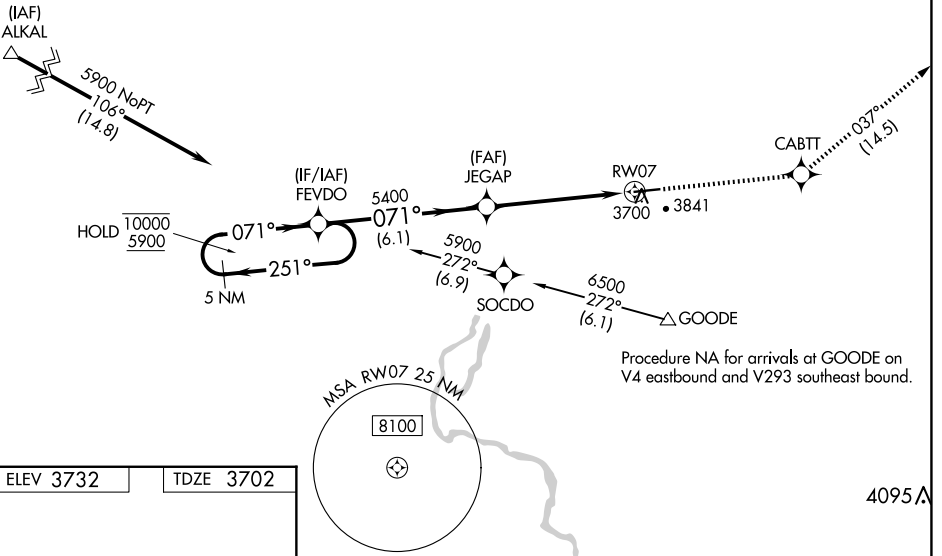
GOODING MUNI (GNG)

RNP APCH - GPS.	MISSED APPROACH: Climb to 7400 direct CABTT and on track 037° to KINZE and hold.
<p>▼ For uncompensated Baro-VNAV systems, procedure NA below -22°C or above 54°C.</p> <p>▲</p>	

AWOS-3PT <b>124.175</b>	SALT LAKE CENTER <b>118.05 363.0</b>	UNICOM <b>122.8 (CTAF) 0</b>
----------------------------	---	---------------------------------

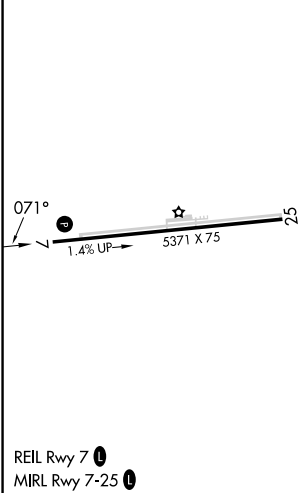


Procedure NA for arrivals at ALKAL on V253 northwest bound and T470 westbound.



Procedure NA for arrivals at GOODE on V4 eastbound and V293 southeast bound.

ELEV 3732	TDZE 3702
-----------	-----------



VGSi and RNAV glidepath not coincident (VGSi Angle 2.75/TCH 40).				7400	CABTT	KINZE
5 NM Holding Pattern				↑	✦	tr 037°
FEVDO						△
10000 ← 251°				JEGAP		
5900 → 071°				5400		
GP 3.00°					0.9 NM to RW07	
TCH 45						
				6.1 NM	4.4 NM	0.9
CATEGORY	A	B	C	D		
LPV DA		3952-¾	250 (300-¾)			
LNNAV/VNAV DA		3952-¾	250 (300-¾)			
LNNAV MDA	3960-1	258 (300-1)		3960-¾	258 (300-¾)	

NW-1, 11 JUN 2026 to 09 JUL 2026

NW-1, 11 JUN 2026 to 09 JUL 2026