

LOC/DME I-EWB <b>109.7</b> Chan <b>34</b>	APP CRS <b>054°</b>	Rwy Ldg TDZE <b>70</b> Apt Elev <b>79</b>	<b>5400</b>
---	------------------------	--	-------------

# ILS or LOC RWY 5

NEW BEDFORD RGNL (EWB)

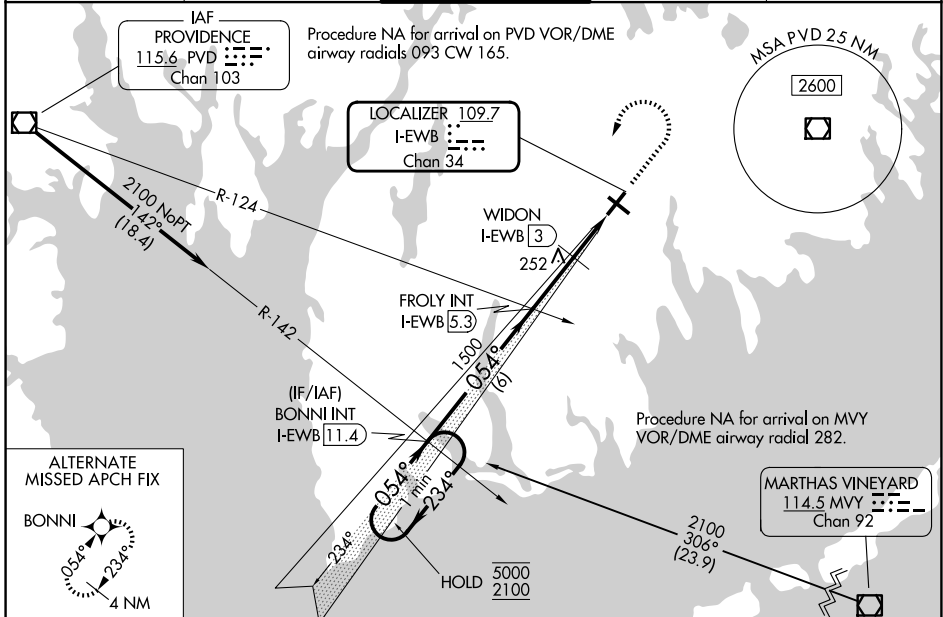
DME required.

Autopilot coupled approach NA below 470.  
Circling Rwy 14 NA at night.  
\* RVR 1800 authorized with use of FD or AP or HUD to DA

MALSR

MISSED APPROACH: Climb to 800 then climbing left turn to 2100 on heading 210° and on I-EWB localizer SW course R-234 to BONNI INT/I-EWB 11.4 DME and hold.

ATIS <b>126.85</b>	PROVIDENCE APP CON* <b>128.7 269.525</b>	NEW BEDFORD TOWER* <b>118.1 (CTAF) 0 239.0</b>	GND CON <b>121.9</b>	UNICOM <b>122.95</b>
-----------------------	---	---	-------------------------	-------------------------



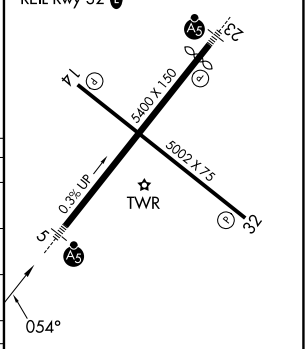
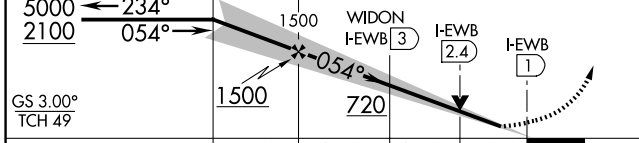
One Minute Holding Pattern

BONNI INT I-EWB 11.4 | FROLY INT I-EWB 5.3 | WIDON I-EWB 3 | I-EWB 2.4 | I-EWB 1

800 | 2100 | hdg 210°

ELEV 79 | TDZE 70

MIRL Rwy 14-32 | HIRL Rwy 5-23 | REIL Rwy 32



CATEGORY	A	B	C	D	
S-ILS 5*	270/24 200 (200-½)				
S-LOC 5	720/24	650 (700-½)	720-1¾	650 (700-1¾)	
CIRCLING	720-1	641 (700-1)	720-1¾ 641 (700-1¾)	960-3 881 (900-3)	
WIDON FIX MINIMUMS					
S-LOC 5	560/24	490 (500-½)	560/50	490 (500-1)	
CIRCLING	620-1 541 (600-1)	640-1 561 (600-1)	720-1¾ 641 (700-1¾)	960-3 881 (900-3)	
FAF to MAP 4.4 NM					
Knots	60	90	120	150	180
Min:Sec	4:24	2:56	2:12	1:46	1:28

NE-1, 11 JUN 2026 to 09 JUL 2026

NE-1, 11 JUN 2026 to 09 JUL 2026