

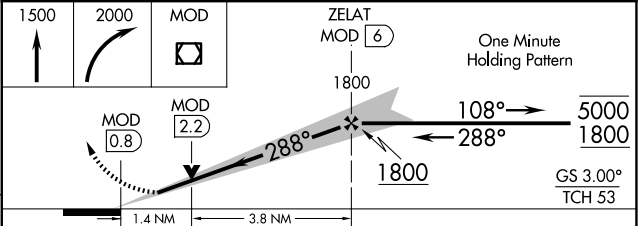
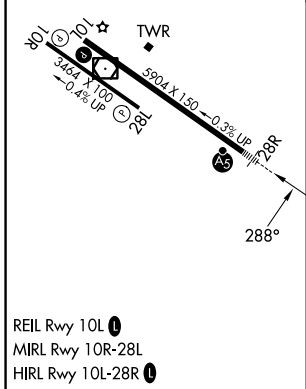
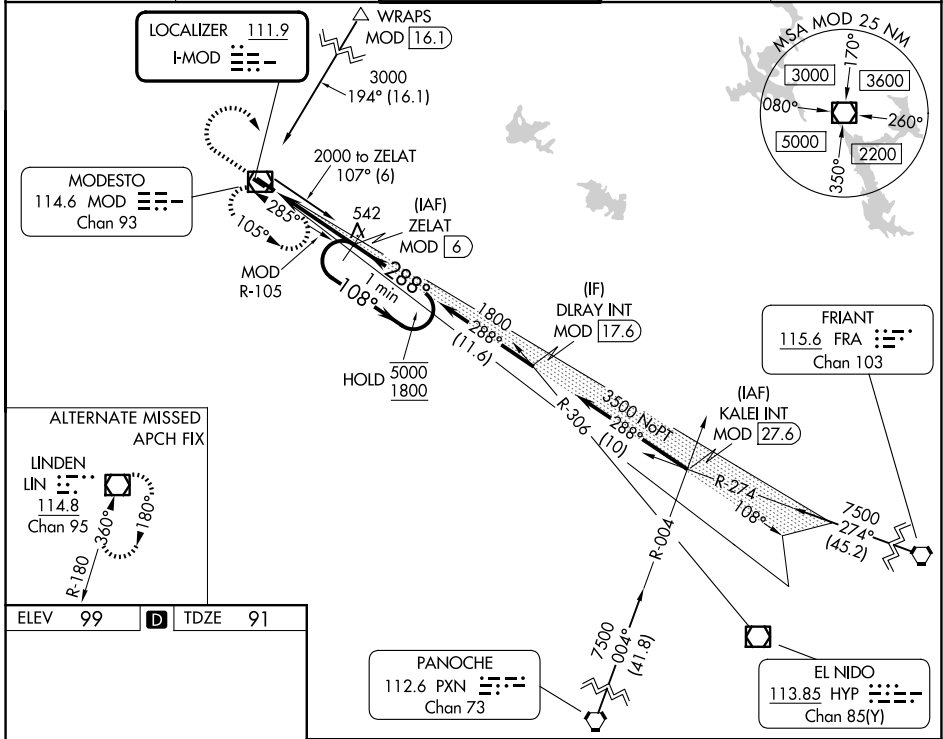
LOC I-MOD 111.9	APP CRS 288°	Rwy Ldg TDZE Apt Elev	5904 91 99
---------------------------	------------------------	-----------------------------	---------------------------------------

ILS or LOC RWY 28R

MODESTO CITY-COUNTY-HARRY SHAM FLD (MOD)

DME required for LOC only.		MALSR AS	MISSED APPROACH: Climb to 1500 then climbing right turn to 2000 direct MOD VOR/DME and hold, continue climb-in-hold to 2000.
Autopilot coupled approach NA below 1080. Circling Rwy 10R, 28L NA at night. DME from MOD VOR/DME. DME use requires simultaneous reception of I-MOD and MOD DME. For inop ALS, increase S-LOC 28R Cats C and D visibility to 1½ SM.			

ATIS 127.7	NORCAL APP CON 120.95 269.45	MODESTO TOWER* 125.3 (CTAF) 0 257.8	GND CON 121.7	UNICOM 122.95
----------------------	--	---	-------------------------	-------------------------



CATEGORY	A	B	C	D
S-ILS 28R	341-½ 250 (300-½)			
S-LOC 28R	580-½	489 (500-½)	580-1	489 (500-1)
CIRCLING	580-1 481 (500-1)	600-1 501 (600-1)	640-1½ 541 (600-1½)	820-2¼ 721 (800-2¼)

SW-2, 11 JUN 2026 to 09 JUL 2026

SW-2, 11 JUN 2026 to 09 JUL 2026