

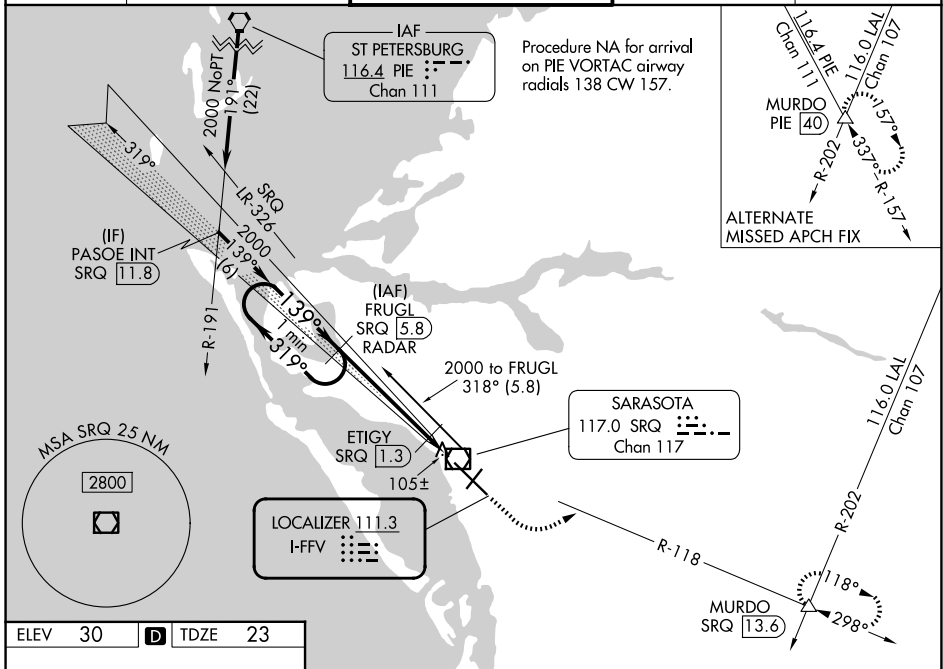
LOC I-FFV	APP CRS	Rwy Ldg	<b>7540</b>
<b>111.3</b>	<b>139°</b>	TDZE	<b>23</b>
		Apt Elev	<b>30</b>

# ILS or LOC RWY 14

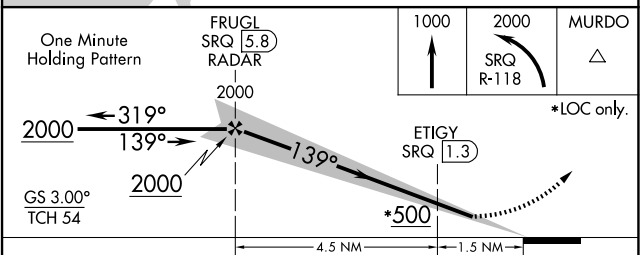
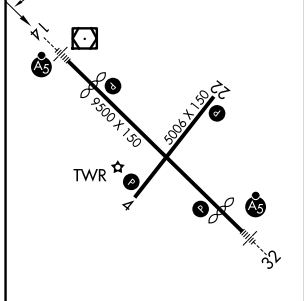
SARASOTA/BRADENTON INTL (SRQ)

DME or RADAR required for LOC only.		MALSR	MISSED APPROACH: Climb to 1000 then climbing left turn to 2000 on SRQ VOR/DME R-118 to MURDO INT/SRQ 13.6 DME and hold.
<p><b>⚠</b> When control tower closed, S-ILS 14 Minimums NA; increase S-LOC 14 Cats A and B and ETIGY Fix Minimums S-LOC 14 all Cats visibility to 1 mile. When control tower closed, inop table does not apply to S-LOC 14 Cats A and B and ETIGY Fix Minimums S-LOC 14 all Cats.</p>			

ATIS	TAMPA APP CON	SARASOTA TOWER ★	GND CON	UNICOM
<b>124.375</b>	<b>119.65 353.575</b>	<b>120.1(CTAF) 256.8</b>	<b>121.9 273.6</b>	<b>122.95</b>



ELEV 30	<b>D</b>	TDZE 23
---------	----------	---------



CATEGORY	A	B	C	D
S-ILS 14	223-1/2 200 (200-1/2)			
S-LOC 14	500-1/2	477 (500-1/2)	500-1	477 (500-1)
CIRCLING	500-1	470 (500-1)	600-1 1/2	600-2
ETIGY FIX MINIMUMS				
S-LOC 14	360-1/2 337 (400-1/2)			
CIRCLING	500-1	470 (500-1)	600-1 1/2	600-2
			570 (600-1 1/2)	570 (600-2)

SE-3, 11 JUN 2026 to 09 JUL 2026

SE-3, 11 JUN 2026 to 09 JUL 2026