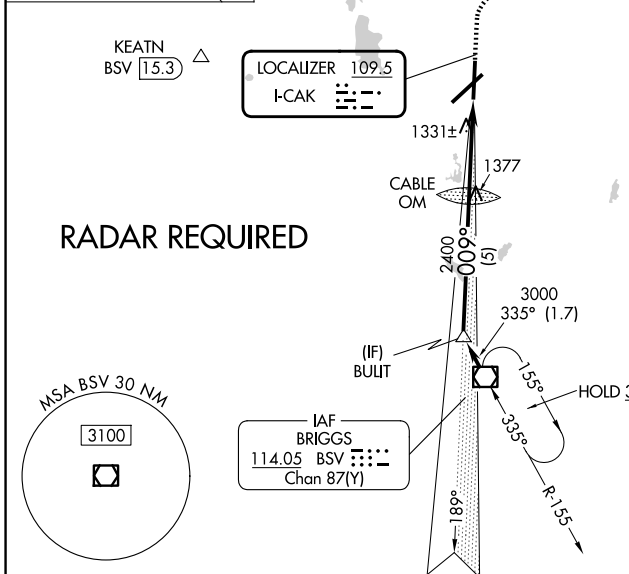
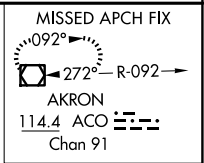
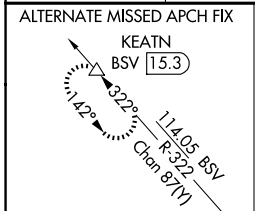


LOC I-CAK 109.5	APP CRS 009°	Rwy Ldg TDZE Apt Elev	7007 1209 1226
---------------------------	------------------------	-----------------------------	---

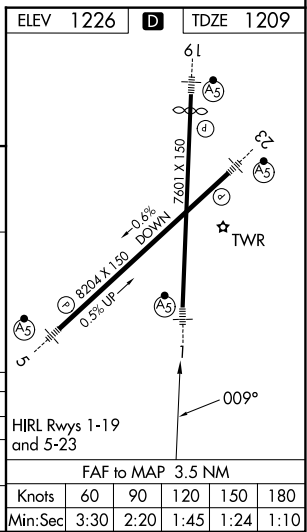
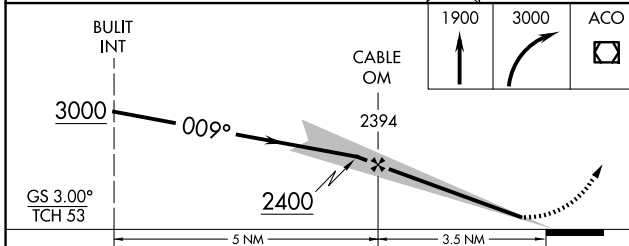
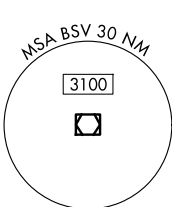
ILS or LOC RWY 1
AKRON-CANTON RGNL (CAK)

<p>▽ **RVR 1800 authorized with the use of FD or AP or HUD to DA.</p>	<p>MALSR </p>	<p>MISSED APPROACH: Climb to 1900 then climbing right turn to 3000 direct ACO VOR/DME and hold.</p>
--	-------------------	---

<p>ATIS 121.05</p>	<p>CLEVELAND APP CON* 125.5 269.25</p>	<p>AKRON-CANTON TOWER 134.75 279.575</p>	<p>GND CON 121.7 348.6</p>
-------------------------------	---	---	---------------------------------------



RADAR REQUIRED



<p>BULT INT</p> <p>3000</p> <p>009°</p> <p>2400</p> <p>2394</p> <p>CABLE OM</p> <p>1900</p> <p>3000</p> <p>ACO</p> <p>GS 3.00° TCH 53</p> <p>5 NM</p> <p>3.5 NM</p>	<p>CATEGORY</p> <p>A</p> <p>B</p> <p>C</p> <p>D</p>	<p>S-ILS 1 **</p> <p>1409/24</p> <p>200 (200-½)</p>	<p>S-LOC 1</p> <p>1600/24</p> <p>391 (400-½)</p> <p>1600/40</p> <p>391 (400-¾)</p>	<p>CIRCLING</p> <p>1760-1</p> <p>534 (600-1)</p> <p>1780-1½</p> <p>554 (600-1½)</p> <p>1800-2</p> <p>574 (600-2)</p>
---	---	---	--	--

HIRL Rwy 1-19 and 5-23					
FAF to MAP 3.5 NM					
Knots	60	90	120	150	180
Min:Sec	3:30	2:20	1:45	1:24	1:10

EC-2, 11 JUN 2026 to 09 JUL 2026

EC-2, 11 JUN 2026 to 09 JUL 2026