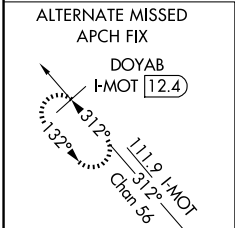
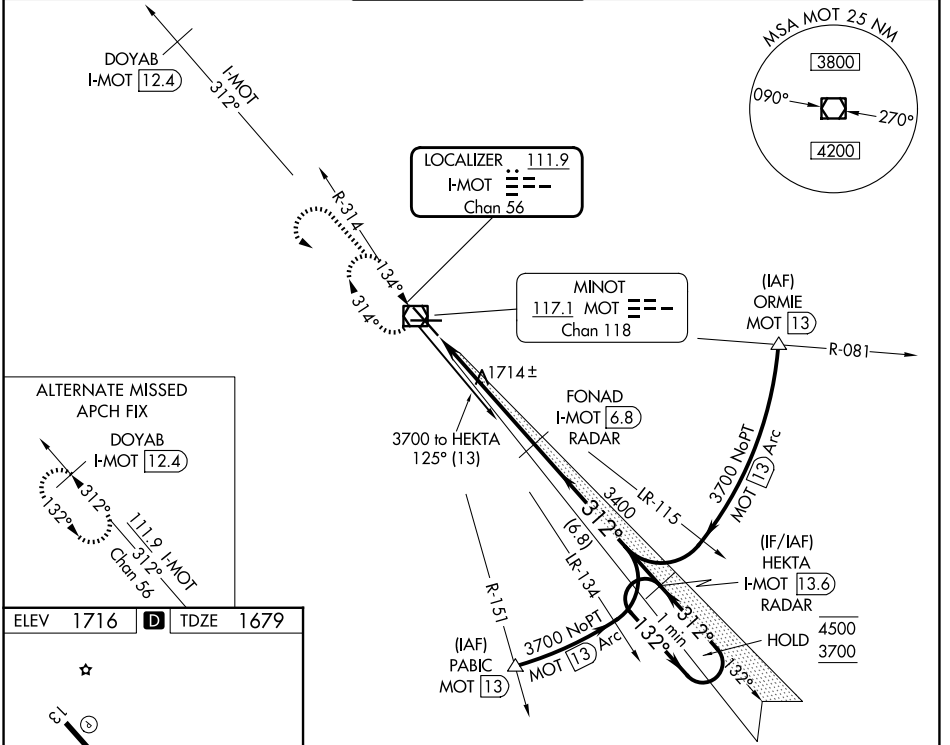


LOC/DME I-MOT <b>111.9</b> Chan <b>56</b>	APP CRS <b>312°</b>	Rwy Ldg TDZE Apt Elev	<b>7700</b> <b>1679</b> <b>1716</b>
---	------------------------	-----------------------------	---

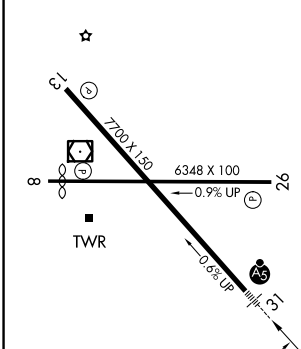
# ILS or LOC RWY 31

MINOT INTL (MOT)

DME or RADAR required.		MALSR	MISSED APPROACH: Climb to 3700 then left turn direct MOT VOR/DME and hold.	
<p>▼ For Inop ALS, increase S-ILS 31 Cat E visibility to RVR 4000, and S-LOC 31 Cat C, D and E visibility to RVR 4500.</p> <p>▲ Autopilot coupled approach NA below 2500.</p>				
ASOS <b>118.725</b>	MINOT APP CON * <b>119.6 363.8</b>	MAGIC CITY TOWER * <b>118.2 (CTAF) 251.125</b>	GND CON <b>121.9</b>	UNICOM <b>122.95</b>

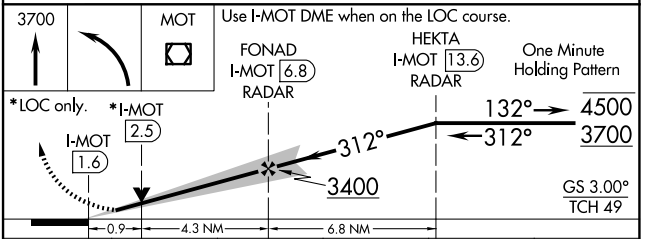


ELEV 1716	<b>D</b>	TDZE 1679
-----------	----------	-----------



REIL Rwy 13  
REIL Rws 8 and 26  
HIRL Rws 8-26 and 13-31  
FAF to MAP 5.2 NM

Knots	60	90	120	150	180
Min:Sec	5:12	3:28	2:36	2:05	1:44



CATEGORY	A	B	C	D	E
S-ILS 31	1879/24 200 (200-½)				
S-LOC 31	1980/24 301 (300-½)		1980/40 301 (300-¾)		
CIRCLING	2200-1 484 (500-1)	2240-1 524 (600-1)	2800-3 1084 (1100-3)		

NC-1, 11 JUN 2026 to 09 JUL 2026

NC-1, 11 JUN 2026 to 09 JUL 2026