

LOC/DME I-BDR 110.7 Chan 44	APP CRS 060°	Rwy Ldg TDZE 7 Apt Elev 9	4677
---	------------------------	---	-------------

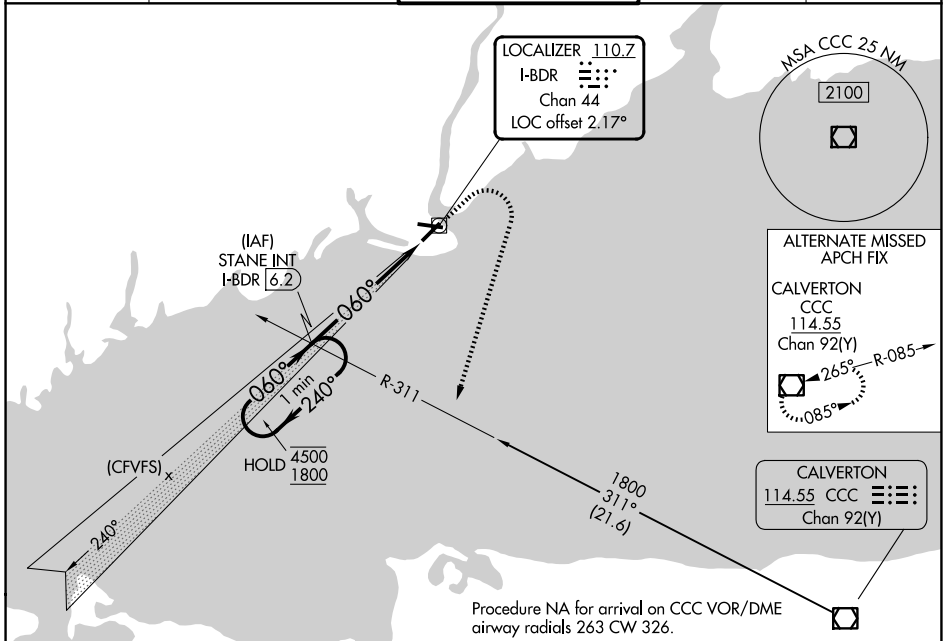
ILS or LOC RWY 6

BRIDGEPORT/SIKORSKY (BDR)

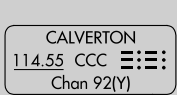
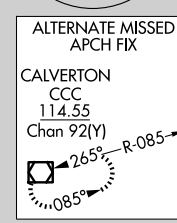
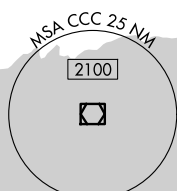
⚠ Circling to Rwy 11, 29 NA at night. Rwy 6 helicopter visibility reduction below ¼ SM NA. Autopilot coupled approach NA below 350.

⚠ MISSED APPROACH: Climb to 500 then climbing right turn to 1800 on heading 210° and CCC VOR/DME R-311 to STANE INT/I-BDR 6.2 DME and hold, continue climb-in-hold to 1800.

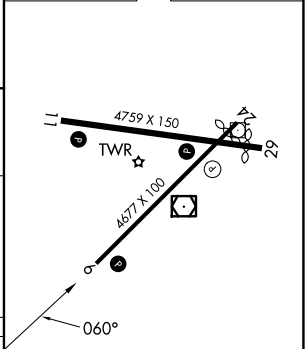
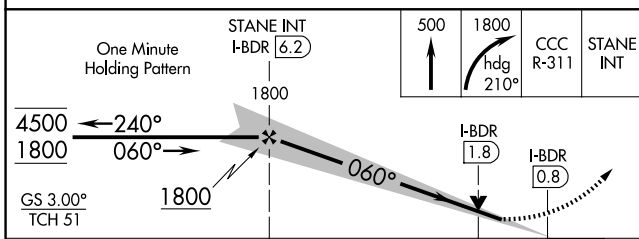
ATIS 119.15	NEW YORK APP CON 124.075 343.65	BRIDGEPORT TOWER★ 120.9 (CTAF) 257.8	GND CON 121.75 257.8	UNICOM 123.0
-----------------------	---	---	--------------------------------	------------------------



Procedure NA for arrival on CCC VOR/DME
airway radials 263 CW 326.



ELEV	9	D	TDZE	7
------	---	---	------	---



CATEGORY	A	B	C	D
S-ILS 6		257-1	250 (300-1)	
S-LOC 6		380-1	373 (400-1)	
CIRCLING	480-1 471 (500-1)	620-1 611 (700-1)	820-2½ 811 (900-2½)	820-2¾ 811 (900-2¾)

REIL Rwy 6, 11, 24, and 29	Ⓛ				
HIRL Rwy 6-24 and 11-29	Ⓛ				
FAF to MAP 5.5 NM					
Knots	60	90	120	150	180
Min:Sec	5:30	3:40	2:45	2:12	1:50

NE-1, 11 JUN 2026 to 09 JUL 2026

NE-1, 11 JUN 2026 to 09 JUL 2026