

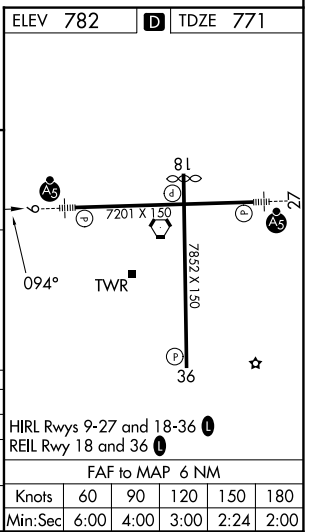
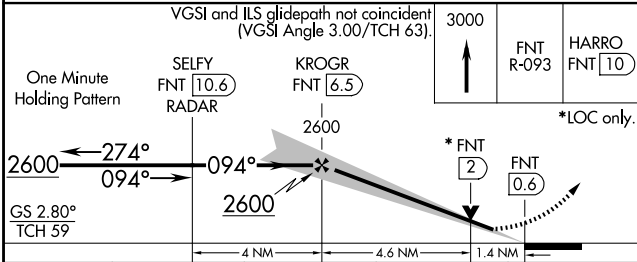
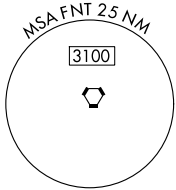
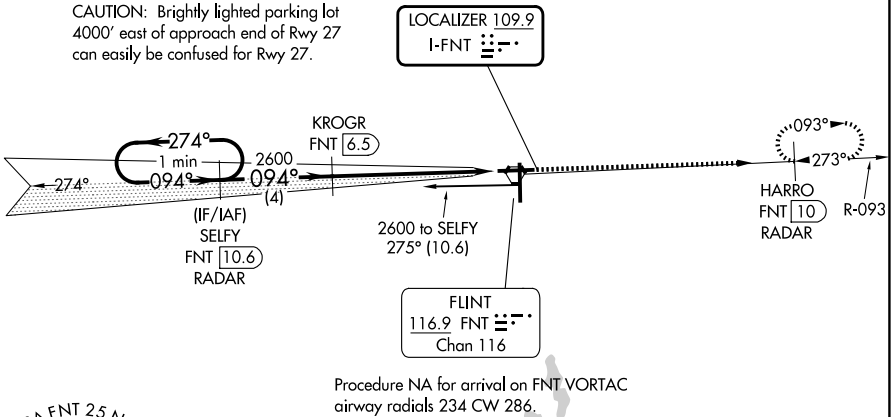
LOC I-FNT <b>109.9</b>	APP CRS <b>094°</b>	Rwy Ldg <b>7201</b> TDZE <b>771</b> Apt Elev <b>782</b>
---------------------------	------------------------	---

# ILS or LOC RWY 9

BISHOP INTL (FNT)

DME or RADAR required for procedure entry. DME or RADAR required.		MALSR	MISSED APPROACH: Climb to 3000 on FNT VORTAC R-093 to HARRO/FNT VORTAC 10 DME/RADAR and hold.	
ATIS <b>133.15</b>	GREAT LAKES APP CON * <b>118.8 257.9</b>	FLINT TOWER * <b>126.3 (CTAF) 257.9</b>	GND CON <b>121.9</b>	UNICOM <b>122.95</b>

CAUTION: Brightly lighted parking lot 4000' east of approach end of Rwy 27 can easily be confused for Rwy 27.



CATEGORY	A	B	C	D
S-ILS 9 **	971/24 200 (200-½)			
S-LOC 9	1280/24	509 (500-½)	1280/55	509 (500-1)
CIRCLING	1280-1 498 (500-1)	1300-1 518 (600-1)	1300-1½ 518 (600-1½)	1520-2¼ 738 (800-2¼)

HIRL Rwy 9-27 and 18-36	REL Rwy 18 and 36
FAF to MAP 6 NM	
Knots	60 90 120 150 180
Min:Sec	6:00 4:00 3:00 2:24 2:00

EC-1, 11 JUN 2026 to 09 JUL 2026

EC-1, 11 JUN 2026 to 09 JUL 2026