

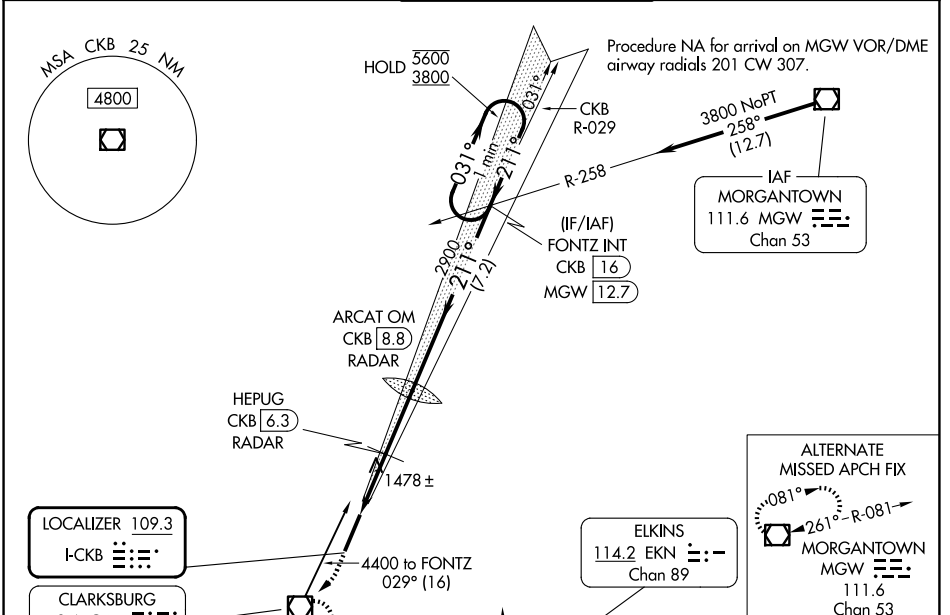
LOC I-CKB 109.3	APP CRS 211°	Rwy Ldg TDZE Apt Elev	7130 1224 1224
---------------------------	------------------------	-----------------------------	---

ILS or LOC RWY 21

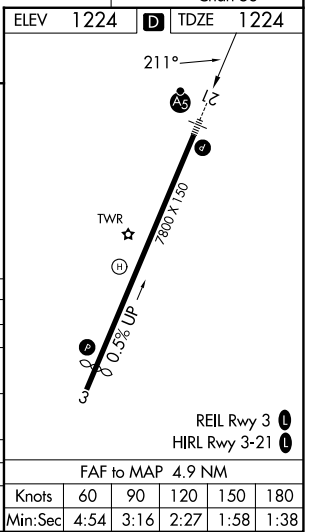
NORTH CENTRAL WEST VIRGINIA (CKB)

	For inop ALS, increase S-LOC 21 Cat C/D visibility to 2½ SM, and HEPUG fix minimums Cat C/D visibility to 1½ SM. DME from CKB VOR/DME. Autopilot coupled approach NA below 2000.	MALSR 	MISSED APPROACH: Climb to 1800 then climbing right turn to 3200 direct CKB VOR/DME and hold, continue climb-in-hold to 3200.
--	--	-----------	--

ATIS 127.825	CLARKSBURG APP CON ★ 121.15 284.65	CLARKSBURG TOWER ★ 126.7 (CTAF) 0 257.925	GND CON 121.9	UNICOM 123.0
------------------------	--	---	-------------------------	------------------------



ELEV 1224	TDZE 1224
1800	3200
CKB HEPUG CKB 6.3 RADAR	ARCAT OM CKB 8.8 RADAR
Fontz INT CKB 16	One Minute Holding Pattern
*LOC only. CKB 3.9	*CKB 5.3
2878	211°
2900	211°
*2020	GS 3.00° TCH 60
1.4 NM	1 NM
2.5 NM	7.2 NM
CATEGORY	A B C D
S-ILS 21	1424/24 200 (200-½)
S-LOC 21	2020/24 796 (800-½) 2020/40 796 (800-¾) 2020-1¾ 796 (800-1¾)
CIRCLING	2020-1 796 (800-1) 2040-1¼ 816 (900-1¼) 2320-3 1096 (1100-3)
HEPUG FIX MINIMUMS (DME or RADAR REQUIRED)	
S-LOC 21	1740/24 516 (600-½) 1740/55 516 (600-1)
CIRCLING	1940-1 716 (800-1) 2040-1¼ 816 (900-1¼) 2320-3 1096 (1100-3)



NE-4, 11 JUN 2026 to 09 JUL 2026

NE-4, 11 JUN 2026 to 09 JUL 2026

FAF to MAP 4.9 NM
Knots 60 90 120 150 180
Min:Sec 4:54 3:16 2:27 1:58 1:38