

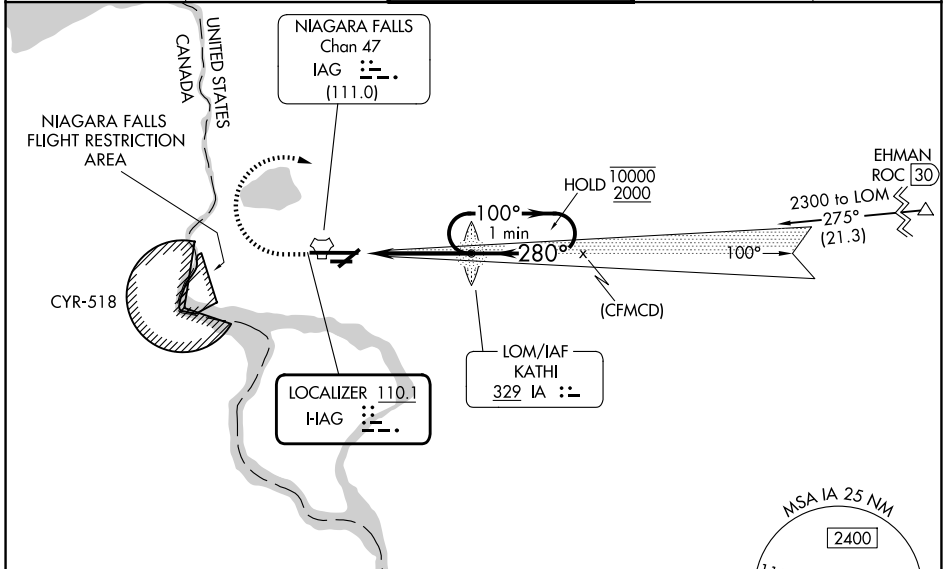
LOC I- <b>IAG</b>	APP CRS	Rwy Ldg	<b>9129</b>
<b>110.1</b>	<b>280°</b>	TDZE	<b>588</b>
		Apt Elev	<b>592</b>

# ILS Y or LOC Y RWY 28

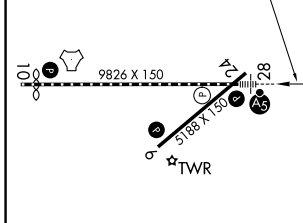
NIAGARA FALLS INTL (IAG)

ADF required.	MALSR	MISSED APPROACH: Climb to 1500 then climbing right turn to 3200 direct KATHI LOM and hold, continue climb-in-hold to 3200.
<p>▼ Rwy 28 helicopter visibility reduction below RVR 4000 NA.                  ▲ Circling Rwy 6 NA at night.                  Circling NA for Cat E southeast of Rwy 6-24.                  Inop table does not apply to S-ILS 28 all Cats.                  For inop ALS, increase S-LOC 28 visibility Cats A/B to RVR 5500, Cats C/D/E to 1½ SM.</p>		

ATIS <b>120.8 269.4</b>	BUFFALO APP CON <b>126.5 317.6</b>	NIAGARA TOWER ★ <b>118.5 (CTAF) 0 349.0</b>	GND CON <b>125.3 275.8</b>	UNICOM <b>122.95</b>
----------------------------	---------------------------------------	--	-------------------------------	-------------------------



ELEV 592	D	TDZE 588
----------	---	----------



REIL Rws 6 and 24

TDZL/RCLS Rwy 28

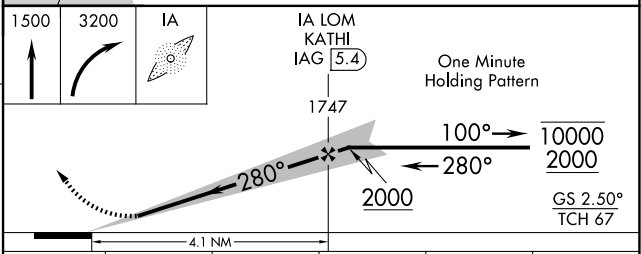
RCLS Rwy 10

HIRL Rwy 10-28

MIRL Rwy 6-24

FAF to MAP 4.1 NM

Knots	60	90	120	150	180
Min:Sec	4:06	2:44	2:03	1:38	1:22



CATEGORY	A	B	C	D	E
S-ILS 28	838/40		250 (300-¾)		
S-LOC 28	1080/40	492 (500-¾)	1080/50	492 (500-1)	
CIRCLING	1100-1	508 (600-1)	1280-2 688 (700-2)	1280-2½ 688 (700-2½)	1280-2½ 688 (700-2½)

NE-2, 11 JUN 2026 to 09 JUL 2026

NE-2, 11 JUN 2026 to 09 JUL 2026