

# HI-TACAN RWY 20

VORTAC SGF <b>116.9</b> Chan <b>116</b>	APCH CRS <b>196°</b>	Rwy Idg <b>7003</b> TDZE <b>1262</b> Arprt Elev <b>1268</b>
---	-------------------------	---

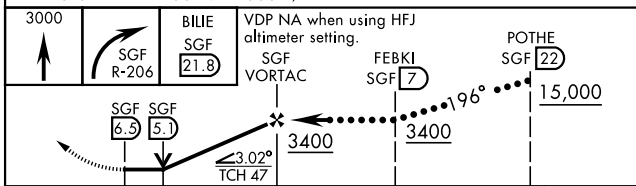
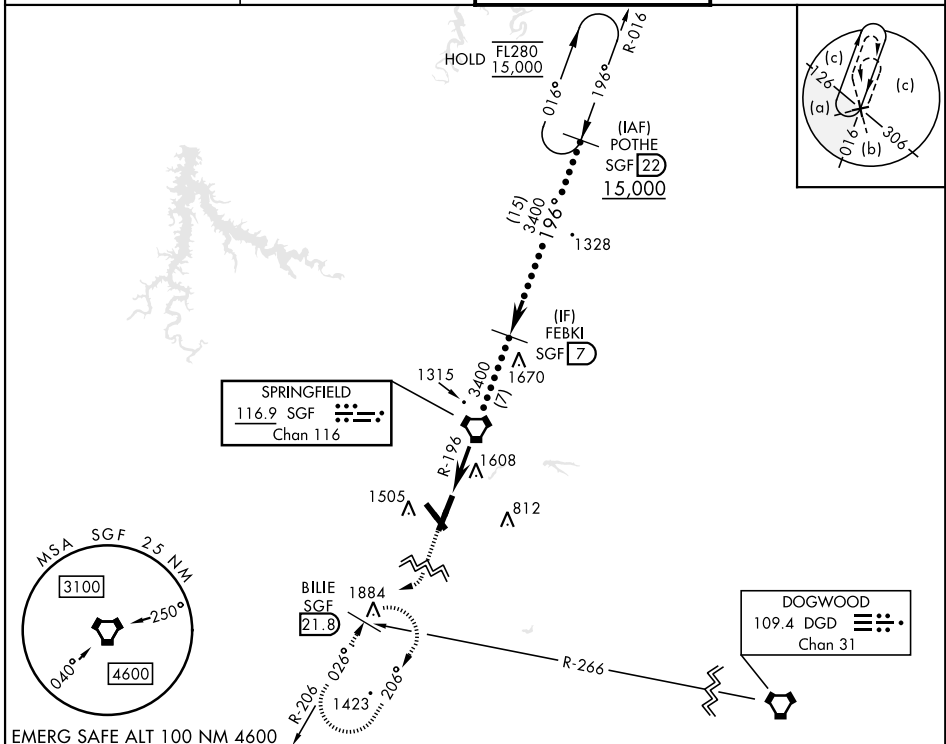
[USAF]

SPRINGFIELD-BRANSON NATL (KSGF)

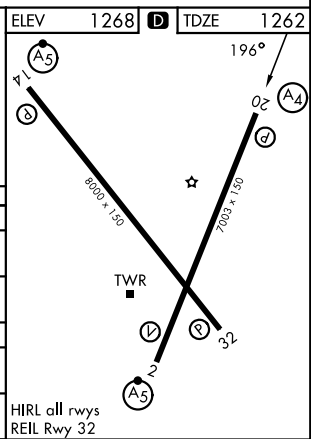
When local altimeter setting not received, use HFJ altimeter setting.  
Rwy 20 helicopter visibility reduction below 3/4 mile NA.

MALS  MISSED APPROACH: Climb to 3000 then right turn via SGF VORTAC R-206 to BILLIE INT/SGF 21.8 DME and hold.

ATIS <b>135.125</b>	APP CON <b>121.1 290.5 020° - 199°</b> <b>124.95 318.2 200° - 019°</b>	TOWER <b>119.9 257.8</b>	GND CON <b>121.9 251.15</b>
------------------------	--	-----------------------------	--------------------------------



CATEGORY	C	D	E
S-20	1760-1 1/8 498 (500-1 1/8)	1760-1 1/8 498 (500-1 1/8)	1760-1 1/8 498 (500-1 1/8)
CIRCLING	1820-1 1/2 552 (600-1 1/2)	1920-2 652 (700-2)	2080-3 812 (900-3)
HFJ ALTIMETER SETTING MINIMUMS			
S-20	1860-1 3/8 598 (600-1 3/8)	1860-1 3/8 598 (600-1 3/8)	1860-1 3/8 598 (600-1 3/8)
CIRCLING	1920-1 3/4 652 (700-1 3/4)	2020-2 1/2 752 (800-2 1/2)	2180-3 912 (1000-3)



# HI-TACAN RWY 20

NC-3, 11 JUN 2026 to 09 JUL 2026

NC-3, 11 JUN 2026 to 09 JUL 2026