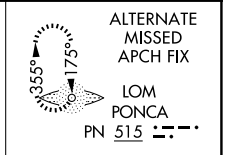
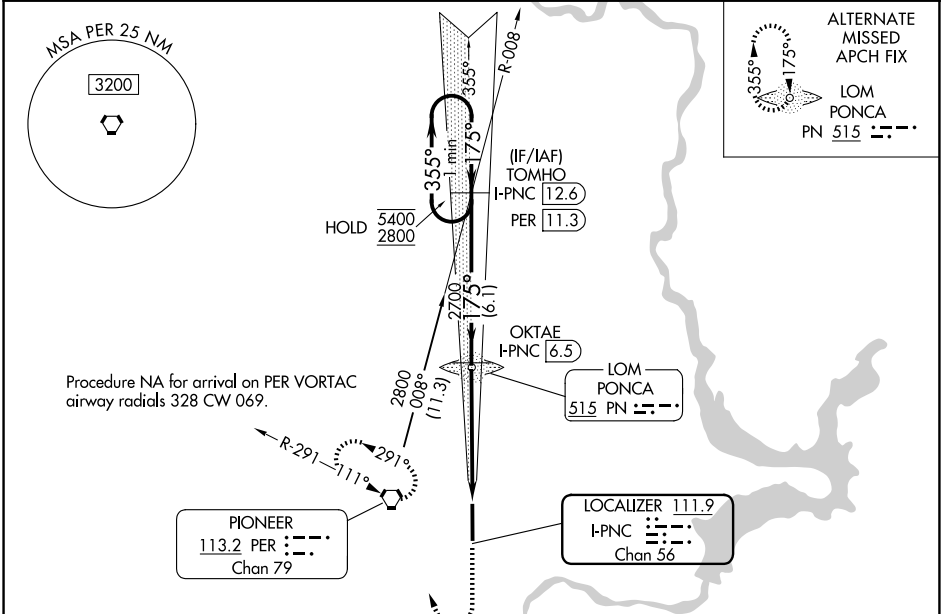


LOC/DME I-PNC 111.9 Chan 56	APP CRS 175°	Rwy Ldg TDZE Apt Elev 7201 1004 1009
---	------------------------	--

ILS or LOC RWY 17

PONCA CITY RGNL (PNC)

DME required.		MALSR	MISSED APPROACH: Climb to 2700 then right turn direct PER VORTAC and hold.
▼	For inop ALS, increase S-LOC 17 visibility Cat C/D to 1 1/2 SM.	AS	
▲	NA	Autopilot coupled approach NA below 1570.	
ASOS 134.075	KANSAS CITY CENTER 127.8 319.1	UNICOM 123.0 (CTAF) 0	



	ELEV 1009	TDZE 1004		
	175°	AS		
	2700	PER		
One Minute Holding Pattern	TOMHO I-PNC 12.6 PER 11.3	OKTAE I-PNC 6.5		
5400 ← 355°	2800 → 175°	2700		
GS 3.00° TCH 48	2700	I-PNC 2.9 I-PNC 1.4		
	6.1 NM	3.6 NM	1.5 NM	
CATEGORY	A	B	C	D
S-ILS 17	1204-1/2		200 (200-1/2)	
S-LOC 17	1520-1/2	516 (600-1/2)	1520-1	516 (600-1)
CIRCLING	1520-1 511 (600-1)	1580-1 571 (600-1)	1800-2 1/4 791 (800-2 1/4)	1880-2 3/4 871 (900-2 3/4)
PNC CITY, OKLAHOMA		PNC CITY RGNL (PNC)		
Amdt 3C 02OCT25		ILS or LOC RWY 17		
		HIRL Rwy 17-35 0		

SC-1, 11 JUN 2026 to 09 JUL 2026

SC-1, 11 JUN 2026 to 09 JUL 2026