

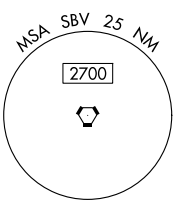
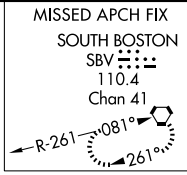
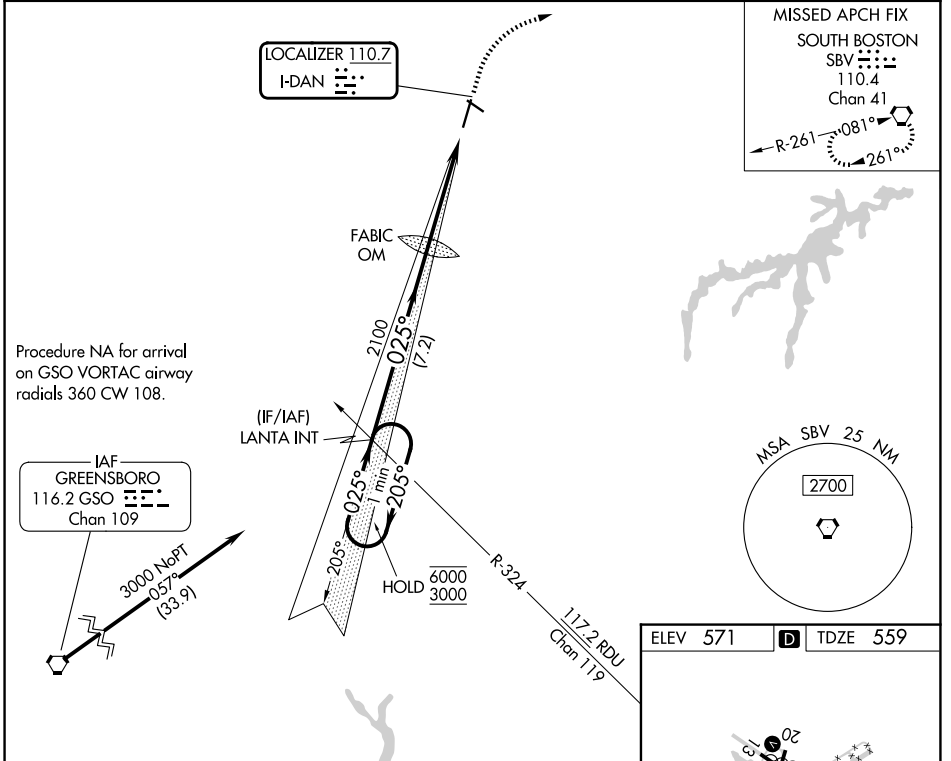
LOC I-DAN 110.7	APP CRS 025°	Rwy Ldg TDZE Apt Elev	5600 559 571
---------------------------	------------------------	-----------------------------	---

ILS or LOC RWY 2

DANVILLE RGNL (DAN)

<p>For inop ALS, increase S-LOC 2 Cat C/D visibility to 1 3/8 SM.</p>	<p>MALSR</p>	<p>MISSED APPROACH: Climb to 2000 then climbing right turn to 3000 direct SBV VORTAC and hold.</p>
---	--------------	--

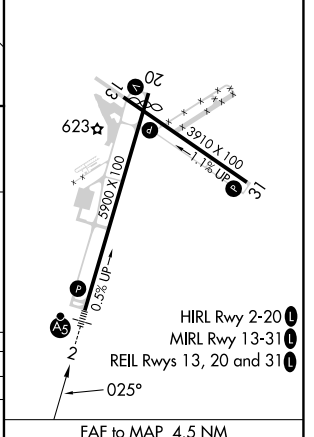
ASOS 128.125	WASHINGTON CENTER 124.05 352.0	UNICOM 123.05 (CTAF) 1
------------------------	--	----------------------------------



Procedure NA for arrival on GSO VORTAC airway radials 360 CW 108.



ELEV 571	D	TDZE 559
----------	----------	----------



<p>One Minute Holding Pattern</p>	LANTA INT	FABIC OM	2000	3000	SBV
	<p>6000 ← 205°</p> <p>3000 → 025°</p> <p>GS 3.00° TCH 54</p>	<p>2019</p> <p>2100</p>	<p>7.2 NM</p> <p>4.5 NM</p>		
CATEGORY	A	B	C	D	
S-ILS 2	759-1/2		200 (200-1/2)		
S-LOC 2	1020-1/2	461 (500-1/2)	1020-1	461 (500-1)	
CIRCLING	1120-1	549 (600-1)	1120-1 1/2	629 (700-2)	1200-2

FAF to MAP 4.5 NM	Knots	60	90	120	150	180
	Min:Sec	4:30	3:00	2:15	1:48	1:30

NE-3, 11 JUN 2026 to 09 JUL 2026

NE-3, 11 JUN 2026 to 09 JUL 2026