

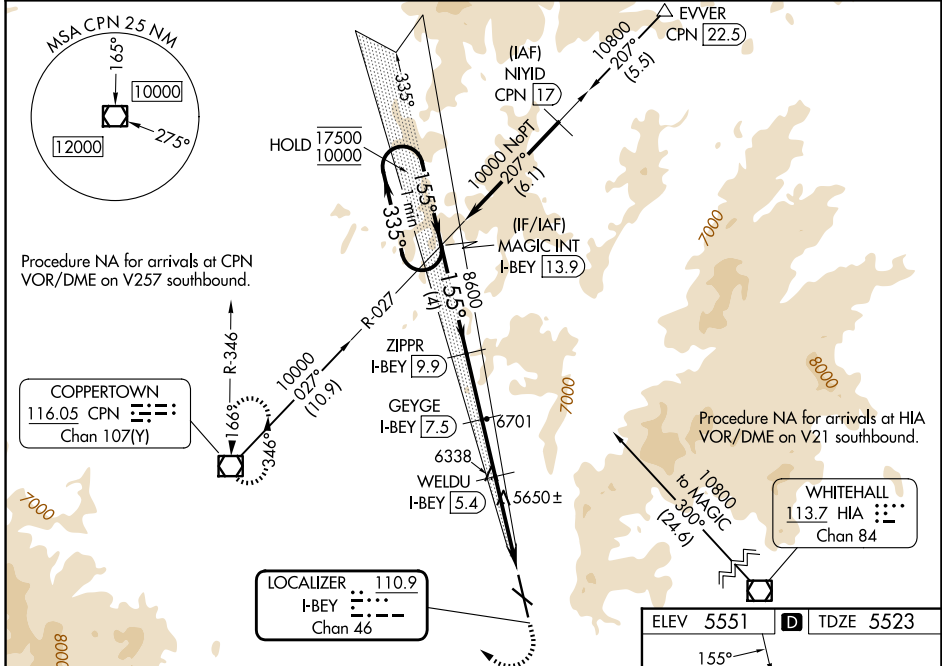
LOC/DME I-BEY <b>110.9</b> Chan <b>46</b>	APP CRS <b>155°</b>	Rwy Ldg <b>9000</b> TDZE <b>5523</b> Apt Elev <b>5551</b>
---	------------------------	---

# ILS or LOC RWY 15

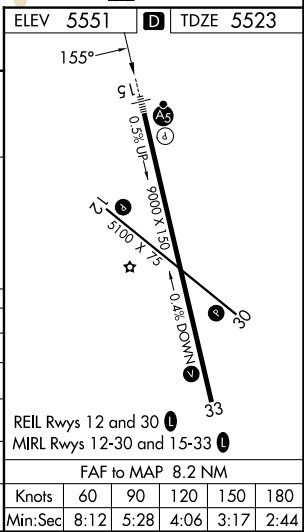
BERT MOONEY (BTM)

DME required.	MALSR	MISSED APPROACH: (Do not exceed 190K until 7100) Climb to 7100 then climbing right turn to 11000 direct CPN VOR/DME and hold, continue climb-in-hold to 11000. *Missed approach requires minimum climb of 365 feet per NM to 8700.
<p>⚠ Circling NA northeast of Rwy 15-33. For inop ALS, increase *S-ILS 15 Cat C and D visibility to 1 SM.                  ⚠ S-ILS 15 all Cats visibility to 2 1/2 SM, and *S-LOC 15 Cats C and D visibility to 1 3/8 SM.                  ❄ -24°C</p>		

ASOS <b>135.175</b>	SALT LAKE CENTER <b>132.4 338.3</b>	UNICOM <b>123.0 (CTAF) 0</b>
------------------------	--	---------------------------------



One Minute Holding Pattern	MAGIC INT I-BEY 13.9	ZIPPR I-BEY 9.9	GEYGE I-BEY 7.5	7100	11000	CPN
	17500 ← 335°	8600	8600	7700	6920	33
GS 3.50° TCH 55	10000	8600	7700	6920	5650 ±	5650 ±
	← 4 NM	← 2.4 NM	← 2.1 NM	← 2.4 NM	← 1.2	
CATEGORY	A	B	C	D		
S-ILS 15*	5778-1/2	255 (300-1/2)	5848-1/2	325 (300-1/2)		
S-ILS 15	6280-1 7/8		757 (800-1 7/8)			
S-LOC 15*	6020-1/2	497 (500-1/2)	6020-1	497 (500-1)		
S-LOC 15	6500-3/4 977 (1000-3/4)	6500-1 977 (1000-1)	6500-2 1/2	977 (1000-2 1/2)		
CIRCLING	6660-1 1/4 1109 (1200-1 1/4)	6660-1 1/2 1109 (1200-1 1/2)	7060-3 1509 (1600-3)	7120-3 1569 (1600-3)		



NW-1, 11 JUN 2026 to 09 JUL 2026

NW-1, 11 JUN 2026 to 09 JUL 2026