

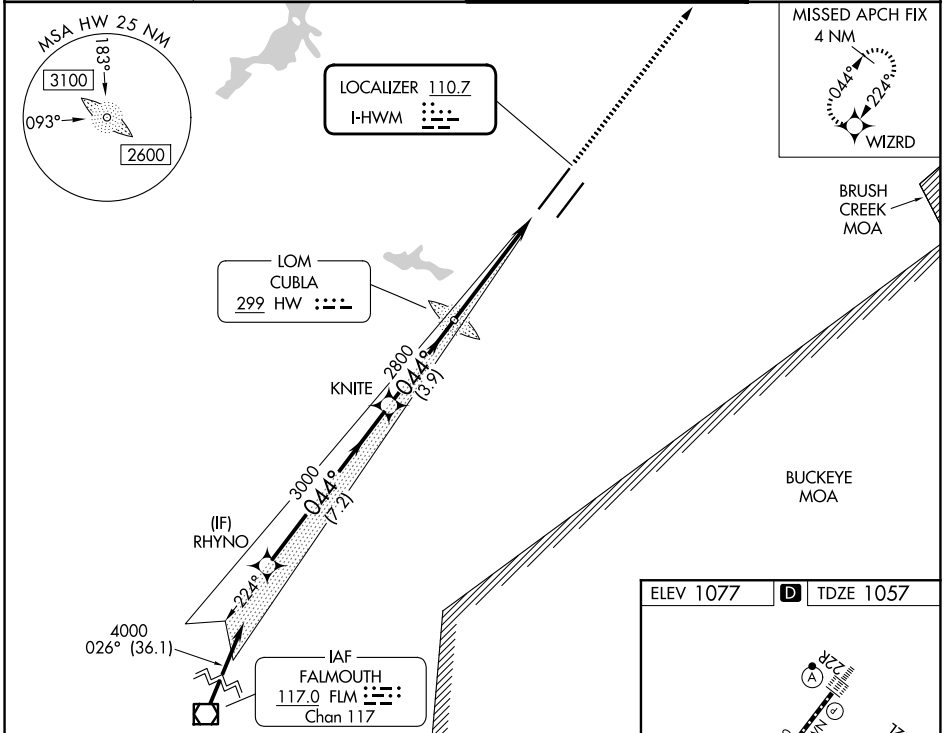
LOC I-HWM <b>110.7</b>	APP CRS <b>044°</b>	Rwy Ldg TDZE Apt Elev	<b>10701</b> <b>1057</b> <b>1077</b>
---------------------------	------------------------	-----------------------------	--

# ILS or LOC RWY 4L

WILMINGTON AIR PARK (ILN)

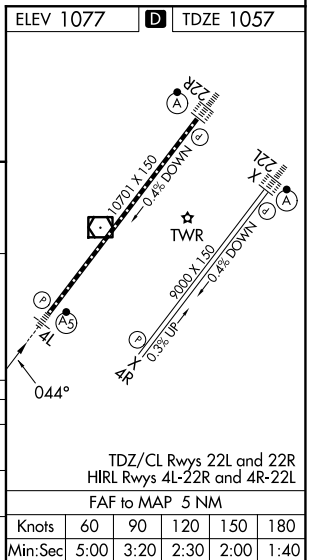
RNP APCH - GPS.		MALSR	MISSED APPROACH: Climb to 3000 direct WIZRD and hold.
<p>For inop ALS, increase S-LOC 4L Cats C and D visibility to 1 3/8 SM.</p>			

D-ATIS <b>124.925</b>	COLUMBUS APP CON <b>118.85 269.275</b>	WILMINGTON TOWER <b>119.475</b>	GND CON <b>121.6</b>
--------------------------	---	------------------------------------	-------------------------



VGSI and ILS glidepath not coincident (VGSI Angle 3.00/TCH 62).

RHYNO	KNITE	HW LOM CUBLA	3000	WIZRD
4000	3000	2701		
GS 3.00° TCH 50		2800		
7.2 NM	3.9 NM	5 NM		
CATEGORY A	B	C	D	
S-ILS 4L	1257/24 200 (200-1/2)			
S-LOC 4L	1520/24 463 (500-1/2)	1520/50 463 (500-1)		
CIRCLING	1560-1 483 (500-1)	1860-2 783 (800-2 1/4)	1860-2 783 (800-2 1/2)	



EC-2, 11 JUN 2026 to 09 JUL 2026

EC-2, 11 JUN 2026 to 09 JUL 2026