

ILS or LOC RWY 17L

ORLANDO INTL (MCO)

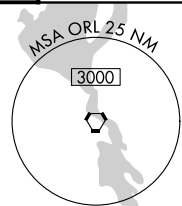
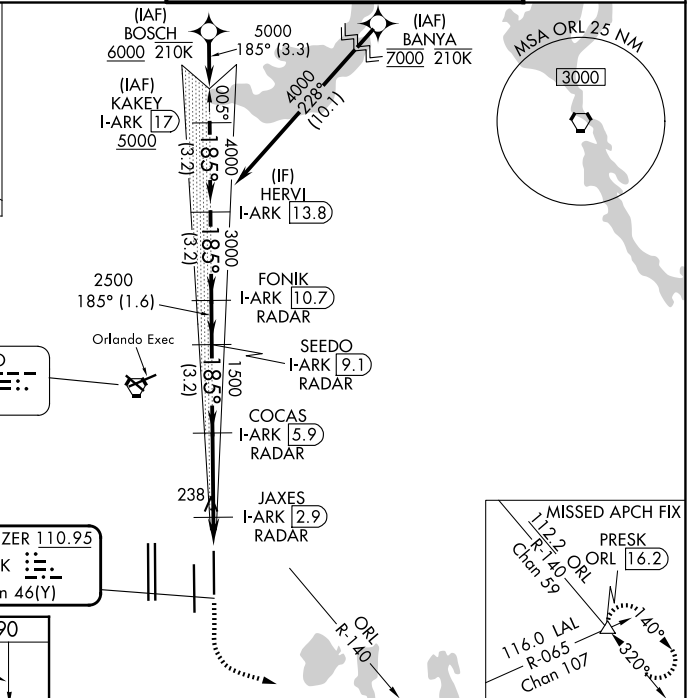
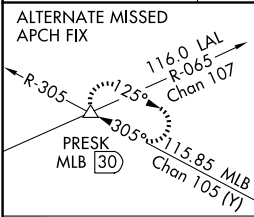
LOC/DME I-ARK 110.95 Chan 46(Y)	APP CRS 185°	Rwy Ldg 9001 TDZE 90 Apt Elev 96
---	------------------------	---

RNAV 1-DME/DME/IRU or GPS or RADAR required for procedure entry. DME or RADAR required.

ALSF-2 MISSED APPROACH: Climb to 500 then climbing left turn to 3000 on heading 100° and ORL VORTAC R-140 to PRESK INT/ORL 16.2 DME and hold, continue climb-in-hold to 3000.

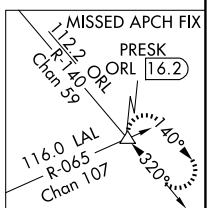
Bright lights on highway midway between Rwy 17L and Rwy 17R may be mistaken for runway lights. Simultaneous approach authorized. For inop ALS, increase S-LOC 17L Cats C/D visibility to RVR 6000.

D-ATIS 121.25	ORLANDO APP CON 124.8 307.0	ORLANDO TOWER 118.45 253.5 (17L/35R, 17R/35L) 124.3 253.5 (18L/36R, 18R/36L)	GND CON 126.4 (E) 121.8 (W)
-------------------------	---------------------------------------	--	---

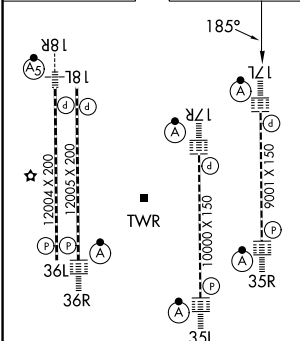


ORLANDO
112.2 ORL
Chan **59**

LOCALIZER **110.95**
I-ARK
Chan **46(Y)**



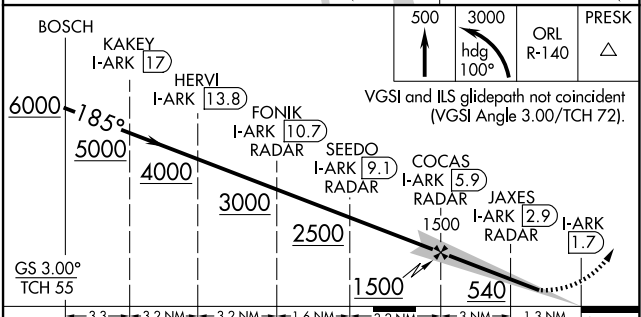
ELEV 96	D	TDZE 90
---------	----------	---------



HIRL all Rwy's
REIL Rwy 36L
TDZ/CL Rwy's 17L/R, 18R, 35L/R and 36R

FAF to MAP 4.3 NM

Knots	60	90	120	150	180
Min:Sec	4:18	2:52	2:09	1:43	1:26



CATEGORY	A	B	C	D
S-ILS 17L	290/18 200 (200-1/2)			
S-LOC 17L	500/24	410 (500-1/2)	500/40	410 (500-3/4)
CIRCLING	740-1	644 (700-1)	644 (700-1 1/4)	644 (700-2)

SE-3, 11 JUN 2026 to 09 JUL 2026

SE-3, 11 JUN 2026 to 09 JUL 2026