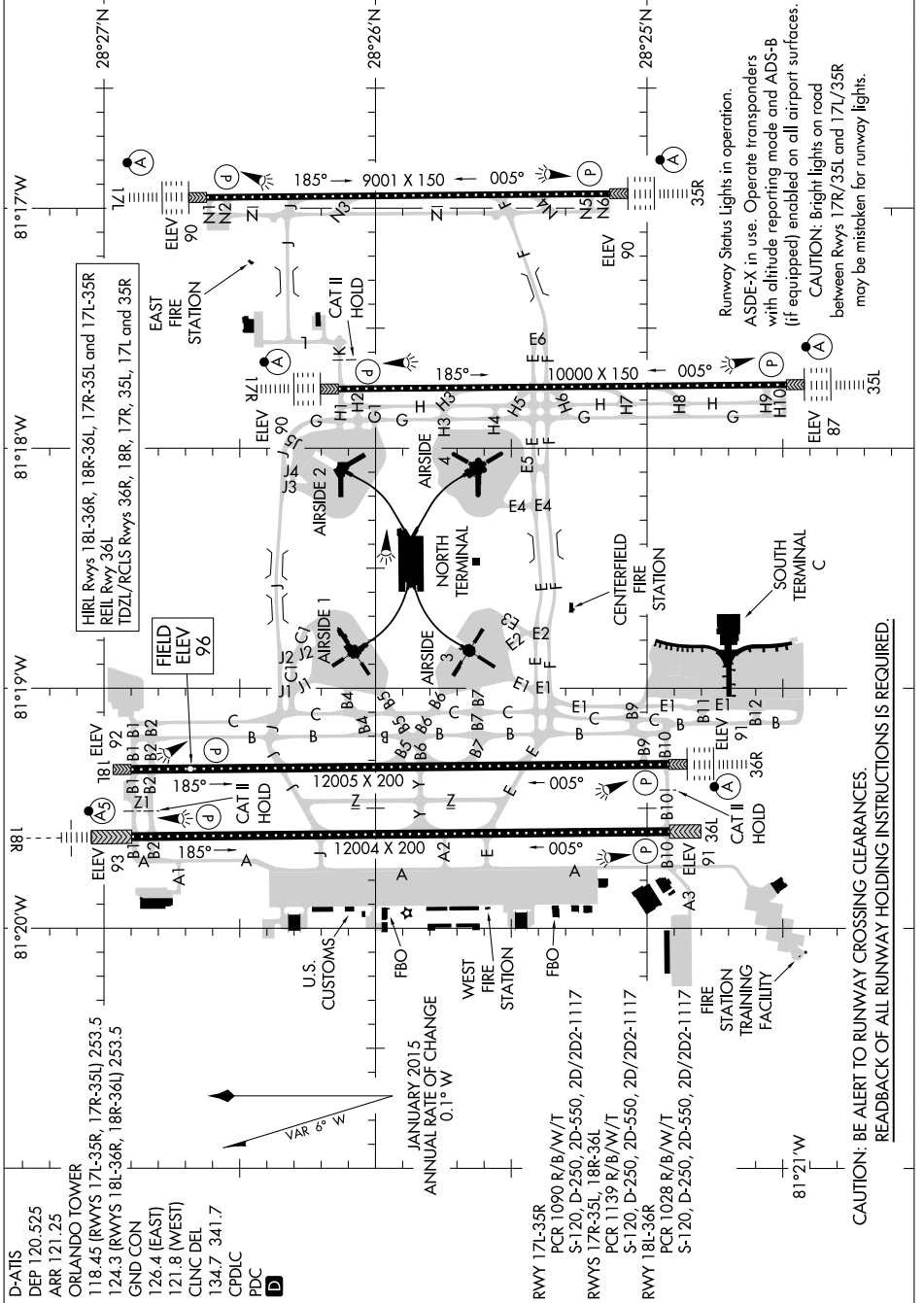


AIRPORT DIAGRAM

AL-571 (FAA)

ORLANDO INTL (MCO)
ORLANDO, FLORIDA

SE-3, 11 JUN 2026 to 09 JUL 2026



Runway Status Lights in operation.
 ASDE-X in use. Operate transponders with altitude reporting mode and ADS-B (if equipped) enabled on all airport surfaces.
 CAUTION: Bright lights on road between Rwys 17R/35L and 17L/35R may be mistaken for runway lights.

CAUTION: BE ALERT TO RUNWAY CROSSING CLEARANCES.
 READBCK OF ALL RUNWAY HOLDING INSTRUCTIONS IS REQUIRED.

AIRPORT DIAGRAM

ORLANDO, FLORIDA
ORLANDO INTL (MCO)

SE-3, 11 JUN 2026 to 09 JUL 2026