

DOVER, DELAWARE

ILS or LOC or RNAV (GPS) RWY 1

| | | |
|---|-------------------------|--|
| WAAAS CH 52207 W01A | APCH CRS 015° | Rwy Idg 9602 TDZE 25 Arpt Elev 29 |
|---|-------------------------|--|

[USAF]

DOVER AFB (KDOV)

RNP APCH. RNAV1-GPS or RADAR required for ILS, LOC.

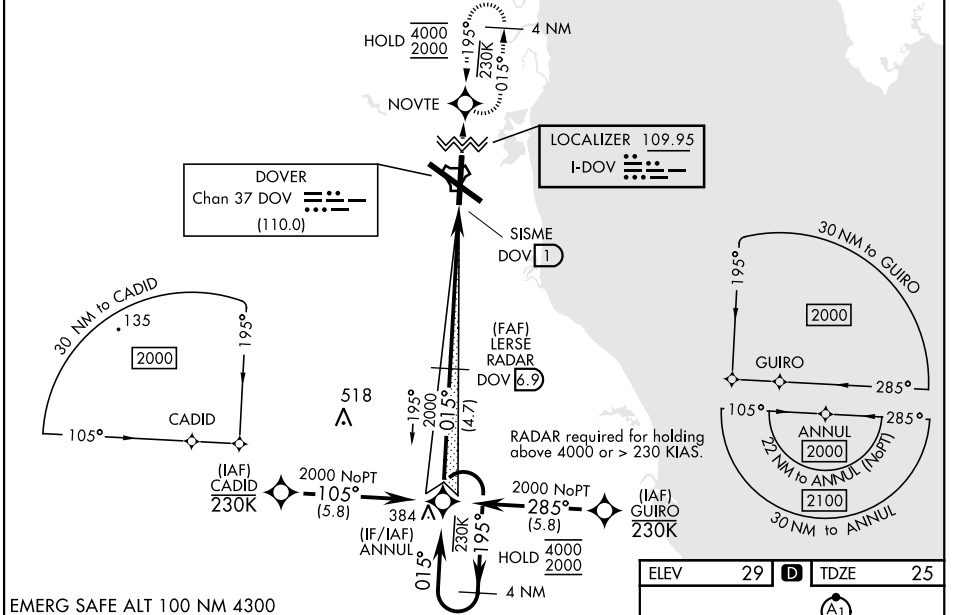
- ▼ * When TDZL/RCLS inop, increase RVR to 24, RVR of 18 authorized with use of FD or AP or HUD to DA. When ALS inop, increase RVR to 40, vis to ¼ mile.
- ** When ALS inop, increase CAT AB RVR to 55, vis to 1 mile, CAT CDE vis to 1½ miles.
- *** When ALS inop, increase CAT AB RVR to 55, vis to 1 mile, CAT CD vis to 1½ miles.



MISSED APPROACH: Climb to 2000 direct NOVTE and hold.

ALTERNATE MISSED APPROACH: Fly runway heading, climb and maintain 2000, expect radar vectors from ATC.

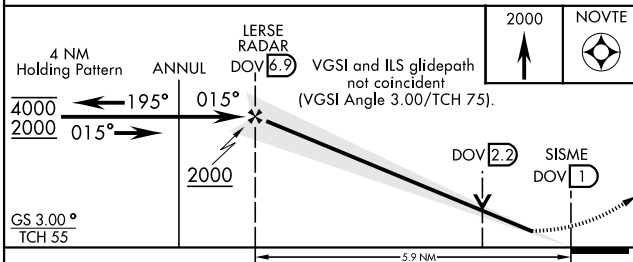
| | | | |
|------------------------------|-----------------------------------|--------------------------------|---------------------------------|
| ATIS 127.825 273.5 | APP CON 132.425 257.875 | TOWER 126.35 279.625 | GND CON 118.875 225.4 |
|------------------------------|-----------------------------------|--------------------------------|---------------------------------|



NE-3, 11 JUN 2026 to 09 JUL 2026

NE-3, 11 JUN 2026 to 09 JUL 2026

EMERG SAFE ALT 100 NM 4300



| | |
|---------|---------|
| ELEV 29 | TDZE 25 |
|---------|---------|

Vertical Profile: 12,800 x 150. 6020 x 150. 189. 015°. A, B, P, A, P, A, P.

| FAF to MAP 5.9 NM | | | | | |
|-------------------|------|------|------|------|------|
| Knots | 60 | 90 | 120 | 150 | 180 |
| Min:Sec | 5:54 | 3:56 | 2:57 | 2:22 | 1:58 |

| CATEGORY | A | B | C | D | E |
|-------------|--------|-------------|------------------------|----------------------|-------------------------|
| S-ILS 1* | 225/18 | | 200 | (200-½) | |
| LPV DA* | 225/18 | | 200 | (200-½) NA | |
| S-LOC 1** | 500/24 | 475 (500-½) | 500/50 | 475 | (500-1) |
| LNAV MDA*** | 500/24 | 475 (500-½) | 500/50 | 475 (500-1) | NA |
| CIRCLING | 540-1 | 511 (600-1) | 620-1½ 591 (600-1½) | 620-2 591 (600-2) | 1080-3 1051 (1100-3) |

DOVER, DELAWARE
Amdt 2 26DEC24

39°08'N-75°28'W

DOVER AFB (KDOV)

ILS or LOC or RNAV (GPS) RWY 1