

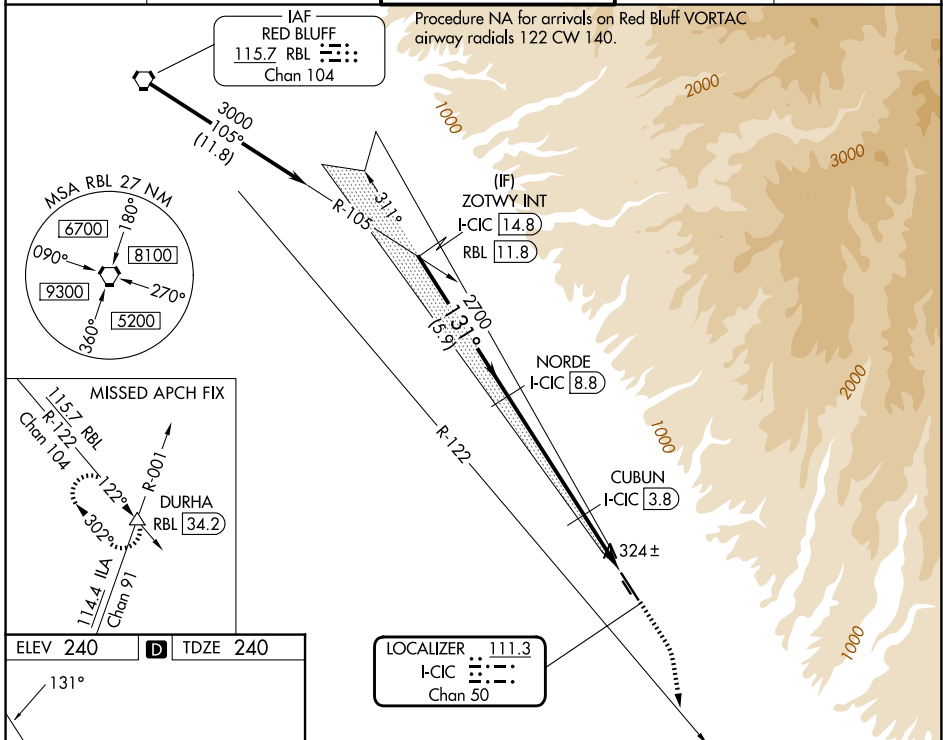
LOC/DME I-CIC <b>111.3</b> Chan <b>50</b>	APP CRS <b>131°</b>	Rwy Ldg TDZE <b>240</b> Apt Elev <b>240</b>	<b>6724</b>
---	------------------------	---	-------------

# ILS or LOC RWY 13L

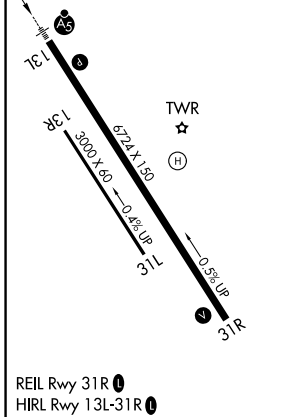
CHICO RGNL (CIC)

DME required.		MALSR 	MISSED APPROACH: Climb to 1000 then climbing right turn to 6000 on heading 155° and RBL R-122 to DURHA INT/ RBL 34.2 DME and hold, continue climb-in-hold to 6000.	
Circling NA east of Rwy 13L/31R.				

ATIS <b>119.675</b>	OAKLAND CENTER <b>132.2 350.3</b>	CHICO TOWER ★ <b>121.0 (CTAF) 239.3</b>	GND CON <b>121.9</b>	UNICOM <b>122.95</b>
------------------------	--------------------------------------	--	-------------------------	-------------------------



ELEV 240	D	TDZE 240
----------	---	----------



ZOTWY INT I-CIC 14.8	NORDE I-CIC 8.8	1000	6000	RBL R-122	DURHA
3000	2700	↑	hdg R-155	△	
GS 3.00° TCH 52	*1080	CUBUN I-CIC 3.8	*I-CIC 2.2	I-CIC 1.3	*LOC only
5.9 NM	5.1 NM	1.6 NM	0.9 NM		
CATEGORY	A	B	C	D	
S-ILS 13L	440-½		200 (200-½)		
S-LOC 13L	580-½		340 (400-½)		
CIRCLING	640-1 400 (400-1)	700-1 460 (500-1)	700-1½ 460 (500-1½)	800-2 560 (600-2)	

SW-2, 11 JUN 2026 to 09 JUL 2026

SW-2, 11 JUN 2026 to 09 JUL 2026