

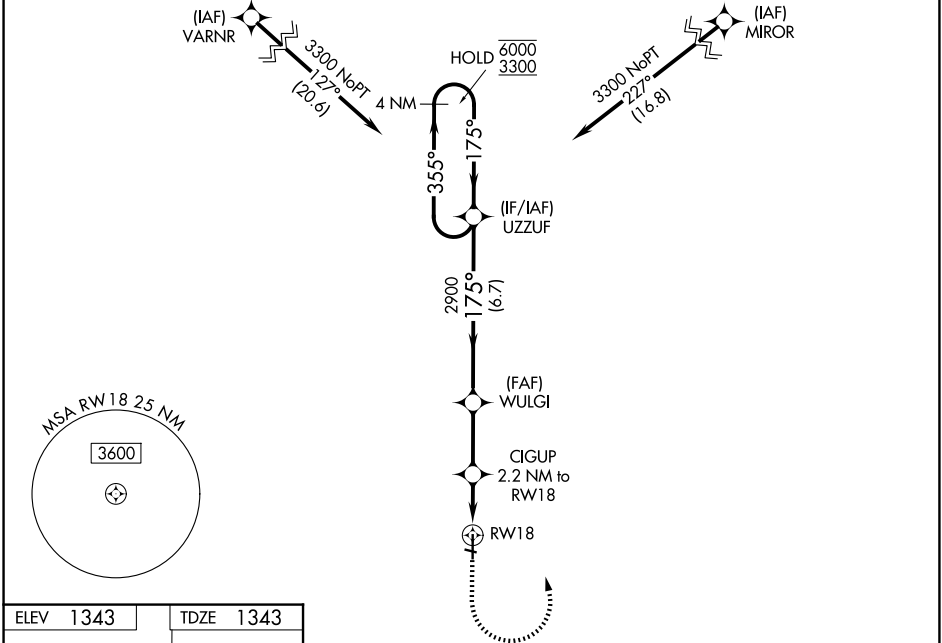
WAAS CH <b>49027</b> <b>W18A</b>	APP CRS <b>175°</b>	Rwy Ldg TDZE <b>1343</b> Apt Elev <b>1343</b>	<b>5002</b>
--	------------------------	---	-------------

# RNAV (GPS) RWY 18

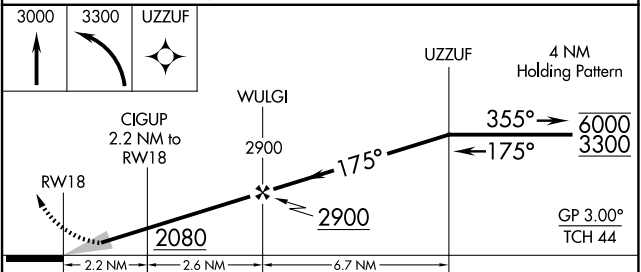
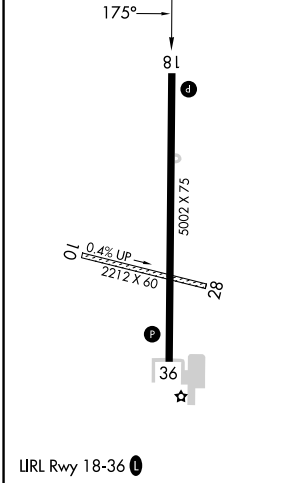
ANTHONY MUNI (A.N.Y)

RNP APCH - GPS.	<p>MISSED APPROACH: Climb to 3000 then climbing left turn to 3300 direct UZZUF and hold.</p>
<p>NA Circling NA to Rwy 10 and 28. Circling Rwy 36 NA at night. Baro-VNAV NA. Circling NA east of Rwy 18-36. Use Wichita Dwight D Eisenhower Nil altimeter setting.</p>	

AWOS-3PT <b>119.575</b>	ICT ASOS <b>125.15</b>	WICHITA APP CON <b>126.7 353.5</b>	UNICOM <b>122.8 (CTAF)</b>
----------------------------	---------------------------	---------------------------------------	-------------------------------



ELEV <b>1343</b>	TDZE <b>1343</b>
------------------	------------------



CATEGORY	A	B	C	D
LPV DA	1643-1	300 (300-1)		NA
LNAV/VNAV DA	1714-1	371 (400-1)		NA
LNAV MDA	1800-1	457 (500-1)	1800-1 <sup>3</sup> / <sub>8</sub> 457 (500-1 <sup>3</sup> / <sub>8</sub> )	NA
CIRCLING	1920-1	577 (600-1)	2080-2 737 (800-2)	NA

NC-2, 11 JUN 2026 to 09 JUL 2026

NC-2, 11 JUN 2026 to 09 JUL 2026