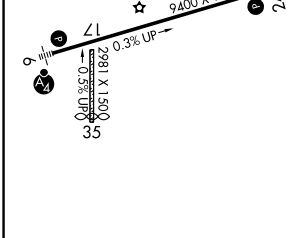
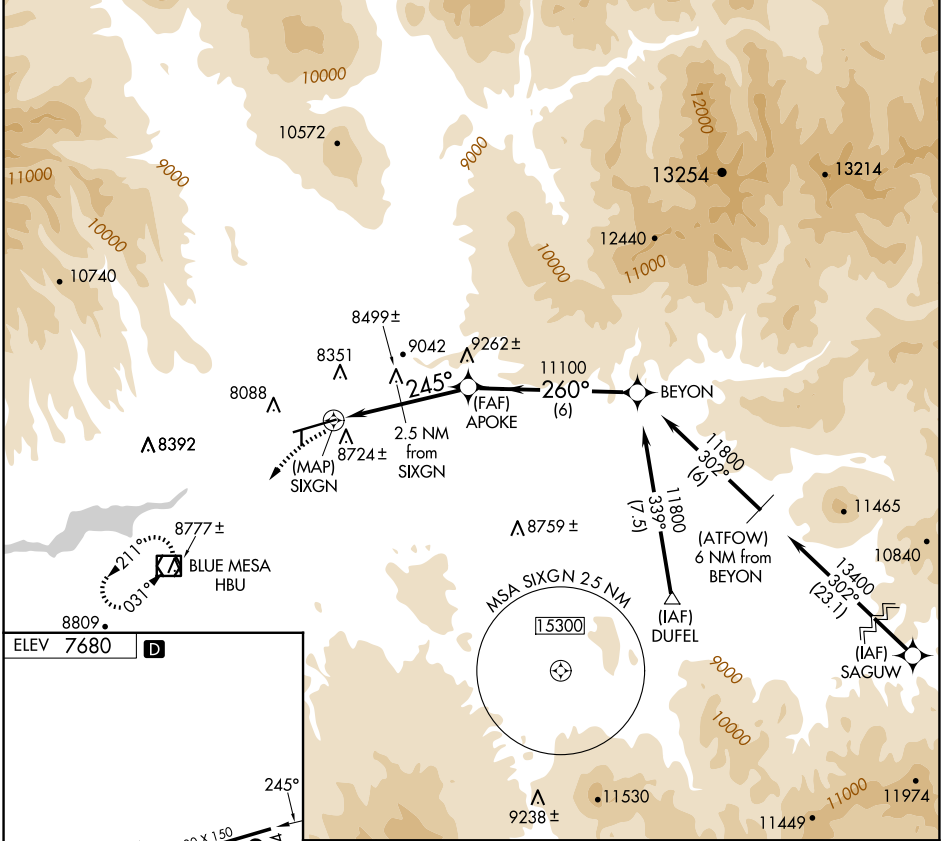


APP CRS <b>245°</b>	Rwy Ldg TDZE Apt Elev	<b>N/A</b> <b>N/A</b> <b>7680</b>
------------------------	-----------------------------	---

**GPS-B**  
GUNNISON-CRESTED BUTTE RGNL (GUC)

Procedure not authorized when airport closed except by prior arrangement. DME/DME RNP-0.3 NA.  
 Circling NA to Rwy 17 and 35.  
 MISSED APPROACH: Climbing left turn to 12000 direct HBU VOR/DME and hold.

AWOS-3PT <b>135.075</b>	DENVER CENTER <b>124.5 350.25</b>	UNICOM <b>122.7 (CTAF)</b>
----------------------------	--------------------------------------	-------------------------------



12000	HBU	APOKE		BEYON
		2.5 NM from SIXGN	260°	11800
		SIXGN	11100	Procedure Turn NA
		2.5 NM	2.5 NM	6 NM

CATEGORY	A	B	C	D
CIRCLING	9180-1¼ 1500 (1500-1¼)	9180-1½ 1500 (1500-1½)	9540-3 1860 (1900-3)	10040-3 2360 (2400-3)

SW-1, 11 JUN 2026 to 09 JUL 2026

SW-1, 11 JUN 2026 to 09 JUL 2026