

LOC/DME I-DSO 109.9 Chan 36	APP CRS 041°	Rwy Ldg TDZE 8021 389 Apt Elev 422
---	------------------------	--

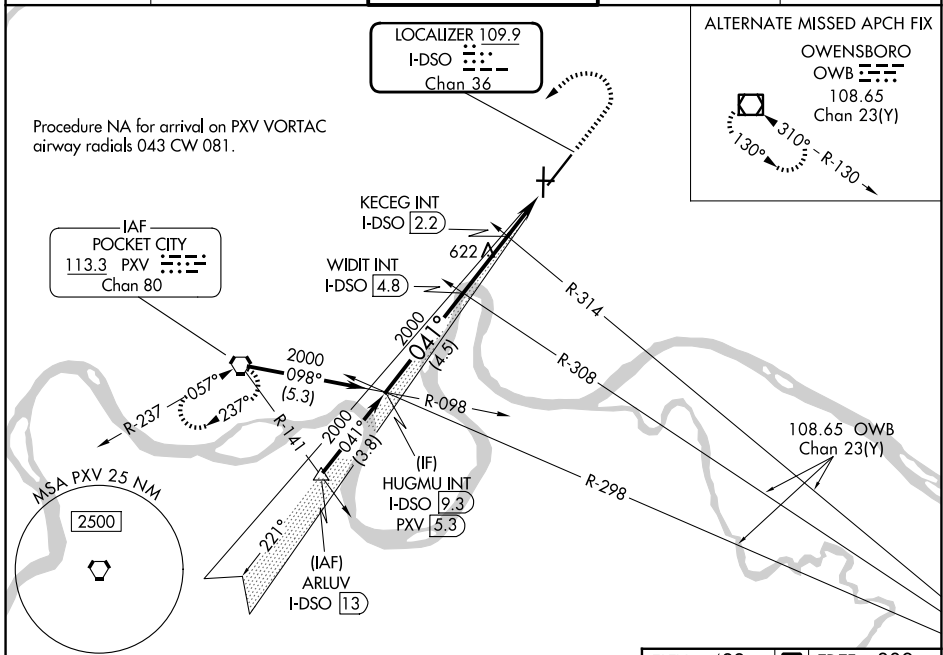
ILS or LOC RWY 4

EVANSVILLE RGNL (EVV)

ASR Circling Rwy 9 NA at night.

MISSED APPROACH: Climb to 1500 then climbing left turn to 2500 direct PXV VORTAC and hold.

ATIS 120.2	EVANSVILLE APP CON * 124.025 290.9	EVANSVILLE TOWER * 118.7 (CTAF) 257.8	GND CON 121.9	UNICOM 122.95
----------------------	--	--	-------------------------	-------------------------



	HUGMU INT I-DSO 9.3	WIDIT INT I-DSO 4.8	2000	KECEG INT I-DSO 2.2	I-DSO DME ANTENNA I-DSO 1.2	I-DSO 0.2
	2000	2000	1180	1500	2500	PXV
	GS 3.00° TCH 49	041°	2000	2000		
	4.5 NM	2.6 NM	1 NM	1.4 NM		
CATEGORY	A	B	C	D		
S-ILS 4		589-3/4	200 (200-3/4)			
S-LOC 4	1180-1 791 (800-1)	1180-1 1/4 791 (800-1 1/4)	1180-2 1/2	791 (800-2 1/2)		
CIRCLING	1180-1 758 (800-1)	1180-1 1/4 758 (800-1 1/4)	1180-2 1/2	758 (800-2 1/2)		
KECEG FIX MINIMUMS (DUAL VOR RECEIVERS OR DME REQUIRED)						
S-LOC 4	880-1	491 (500-1)	880-1 3/8	491 (500-1 3/8)		
CIRCLING	920-1 498 (500-1)	1040-1 618 (700-1)	1040-1 3/4 618 (700-1 3/4)	1040-2 618 (700-2)		

ELEV 422 **D** TDZE 389

HIRL Rwys 4-22 and 18-36 **(1)**
REIL Rwys 4, 18, and 36 **(1)**
MIRL Rwy 9-27 **(1)**

FAF to MAP 4.9 NM

Knots	60	90	120	150	180
Min:Sec	4:54	3:16	2:27	1:58	1:38

EC-2, 11 JUN 2026 to 09 JUL 2026

EC-2, 11 JUN 2026 to 09 JUL 2026