

| | | |
|---------------------------|------------------------|-------------------------|
| LOC I-CDR 110.9 | APP CRS 028° | Rwy Idg 5211 |
| | | TDZE 3294 |
| | | Apt Elev 3298 |


ILS or LOC RWY 3

CHADRON MUNI (CDR)

ADF required.

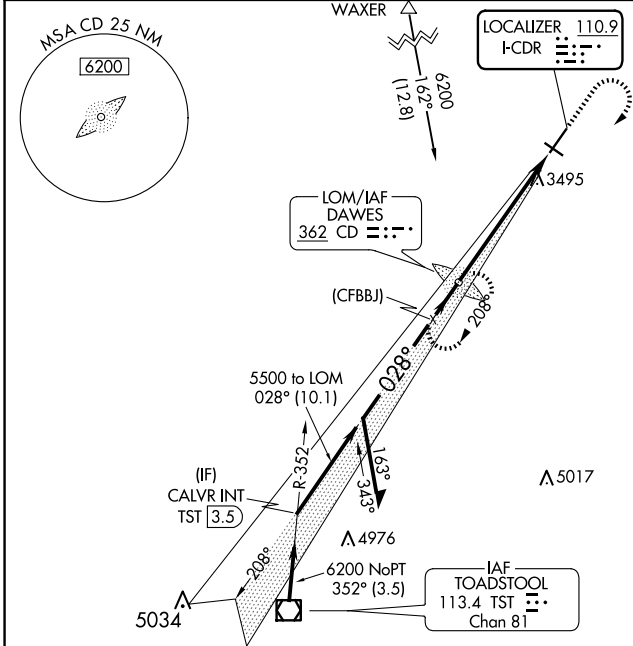
⚠ When local altimeter setting not received, use Pine Ridge altimeter setting and increase S-ILS 3 DA to 3564 feet; increase all MDAs 80 feet and S-LOC 3 visibility Cat C/D ¼ SM, and Circling visibility Cat B/C ⅓ SM. Inop table does not apply to S-ILS 3 all Cats, S-LOC 3 Cats A and B. For inop ALS, increase S-LOC 3 Cats C and D visibility to 1½ SM. When using Pine Ridge altimeter setting, inop table does not apply to S-ILS 3 all Cats, S-LOC 3 Cat A. For inop ALS when using Pine Ridge altimeter setting, increase S-LOC 3 Cat B visibility to 1¼ SM, Cats C and D visibility to 2 SM.

MALS



MISSED APPROACH:
Climb to 5100 then climbing right turn to 6200 direct DAWES LOM and hold.

| | | |
|-----------------------|--------------------------------------|---------------------------------|
| ASOS 118.05 | DENVER CENTER 127.95 338.2 | UNICOM 122.8 (CTAF) 1 |
|-----------------------|--------------------------------------|---------------------------------|



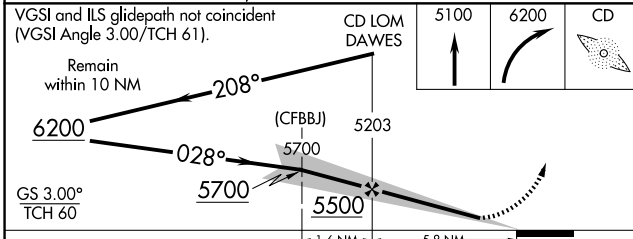
Λ 3868

Λ 4169

Λ 4575

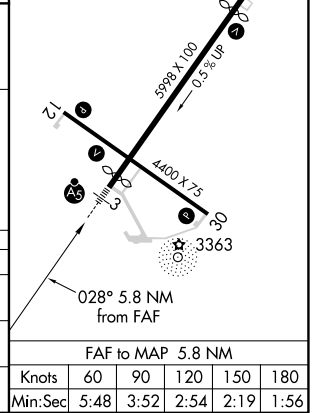
Λ 4700±

Λ 5017



| | | |
|--------------------|---|-----------|
| ELEV 3298 | D | TDZE 3294 |
| REIL Rwy 21 and 30 | 1 | |
| MIRL Rwy 12-30 | 1 | |
| HIRL Rwy 3-21 | 1 | |

| CATEGORY | A | B | C | D |
|----------|--------------------|-------------|---------|------------------------|
| S-ILS 3 | 3494-1 200 (200-1) | | | |
| S-LOC 3 | 3960-1 | 666 (700-1) | 3960-1½ | 666 (700-1½) |
| CIRCLING | 3960-1 | 662 (700-1) | 3960-1⅞ | 4220-3 922 (1000-3) |



NC-2, 11 JUN 2026 to 09 JUL 2026

NC-2, 11 JUN 2026 to 09 JUL 2026

| | | | | | |
|-------------------|------|------|------|------|------|
| FAF to MAP 5.8 NM | | | | | |
| Knots | 60 | 90 | 120 | 150 | 180 |
| Min:Sec | 5:48 | 3:52 | 2:54 | 2:19 | 1:56 |