

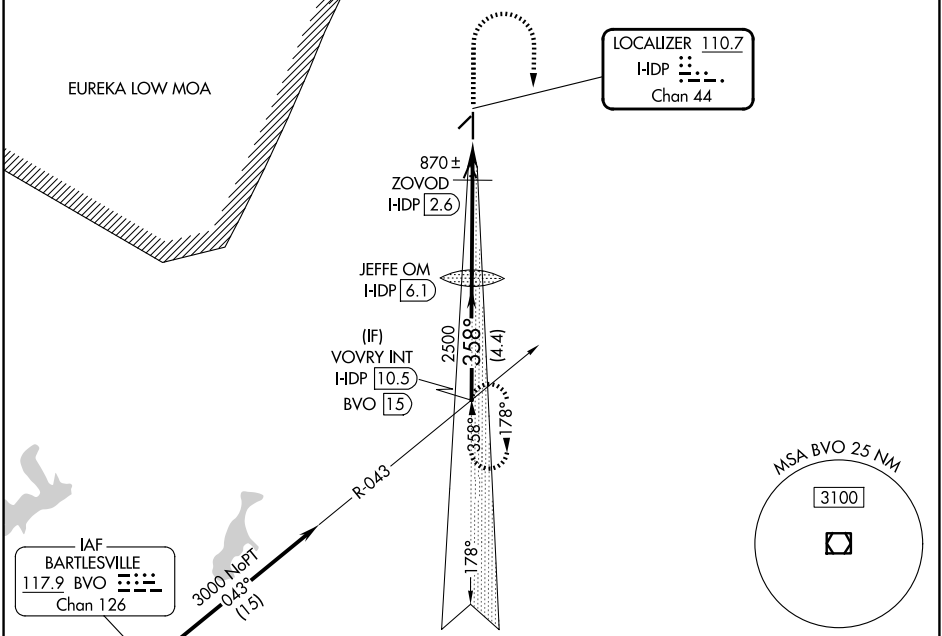
LOC/DME HDP 110.7 Chan 44	APP CRS 358°	Rwy Ldg 5501 TDZE 821 Apt Elev 825
---	------------------------	---

ILS or LOC RWY 35

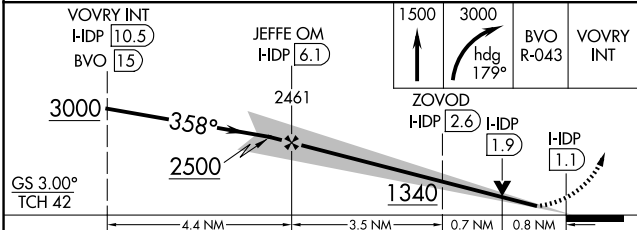
INDEPENDENCE MUNI (IDP)

NA Circling Rwy 4, 22 NA at night.	MALS R A5	MISSED APPROACH: Climb to 1500 then climbing right turn to 3000 on heading 179° to intercept BVO VOR/DME R-043 to VOVRY INT and hold.
---	------------------	---

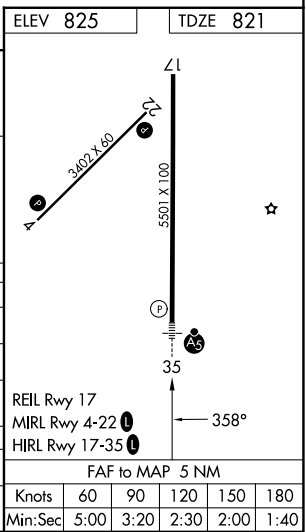
AWOS-3PT 118.525	KANSAS CITY CENTER 128.6 282.325	UNICOM 123.05 (CTAF)
----------------------------	--	--------------------------------



Procedure NA for arrivals at BVO VOR/DME on V190 southwest bound.



CATEGORY	A	B	C	D
S-ILS 35	1021-1/2		200 (200-1/2)	
S-LOC 35	1340-1/2 519 (600-1/2)		1340-1 519 (600-1)	
CIRCLING	1340-1 515 (600-1)		1340-1 1/2 515 (600-1 1/2) 1680-2 3/4 855 (900-2 3/4)	
ZOVOD FIX MINIMUMS				
S-LOC 35	1120-1/2 299 (300-1/2)			
CIRCLING	1280-1 455 (500-1)		1340-1 1/2 515 (600-1 1/2) 1680-2 3/4 855 (900-2 3/4)	



NC-2, 11 JUN 2026 to 09 JUL 2026

NC-2, 11 JUN 2026 to 09 JUL 2026