

LOC I-CEJ 108.9	APP CRS 190°	Rwy Ldg 5036 TDZE 19 Apt Elev 22
---------------------------	------------------------	---

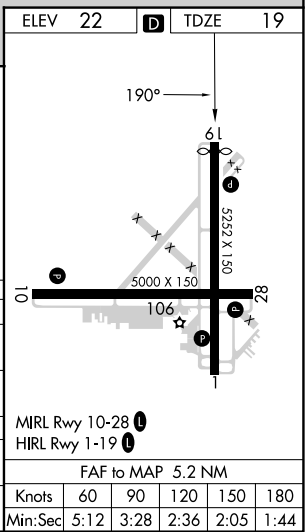
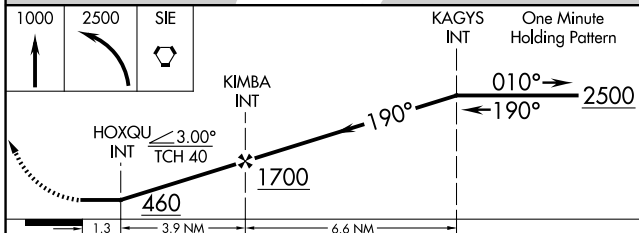
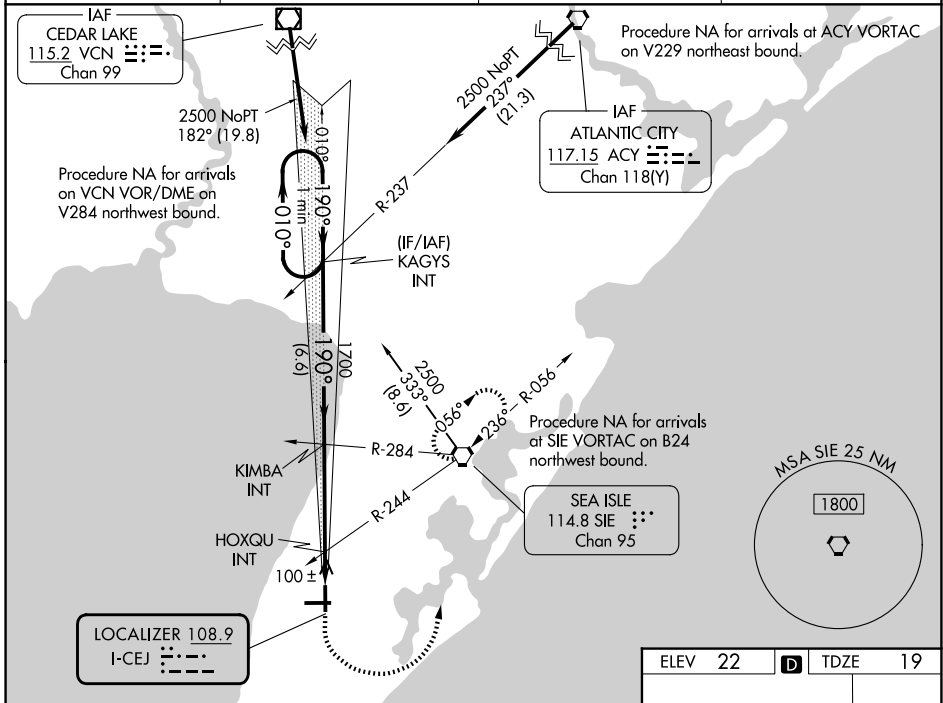
LOC RWY 19

CAPE MAY COUNTY (WWD)

NA Circling NA for Cats C and D NE of Rwy 19 and 28. Rwy 19 helicopter visibility reduction below 1 SM NA. Circling Rwy 1 NA at night.

MISSED APPROACH: Climb to 1000 then climbing left turn to 2500 direct SIE VORTAC and hold.

AWOS-3PT 118.275	ATLANTIC CITY APP CON 124.6 327.125	CLNC DEL 121.7	UNICOM 122.7 (CTAF)
----------------------------	---	--------------------------	-------------------------------



CATEGORY	A	B	C	D
S-19	460-1	441 (500-1)	460-1 $\frac{3}{8}$	441 (500-1 $\frac{3}{8}$)
CIRCLING	480-1 458 (500-1)	620-1 598 (600-1)	620-1 $\frac{1}{2}$ 598 (600-1 $\frac{1}{2}$)	980-3 958 (1000-3)
HOXQU FIX MINIMUMS (DUAL VOR RECEIVERS REQUIRED)				
S-19	360-1 341 (400-1)			
CIRCLING	480-1 458 (500-1)	620-1 598 (600-1)	620-1 $\frac{1}{2}$ 598 (600-1 $\frac{1}{2}$)	980-3 958 (1000-3)

NE-2, 11 JUN 2026 to 09 JUL 2026

NE-2, 11 JUN 2026 to 09 JUL 2026