

LOC/DME I-PSC <b>108.7</b> Chan 24	APP CRS <b>211°</b>	Rwy Ldg TDZE Apt Elev	<b>7110</b> <b>403</b> <b>410</b>
--	------------------------	-----------------------------	---

# ILS or LOC RWY 21R

TRI-CITIES (PSC)

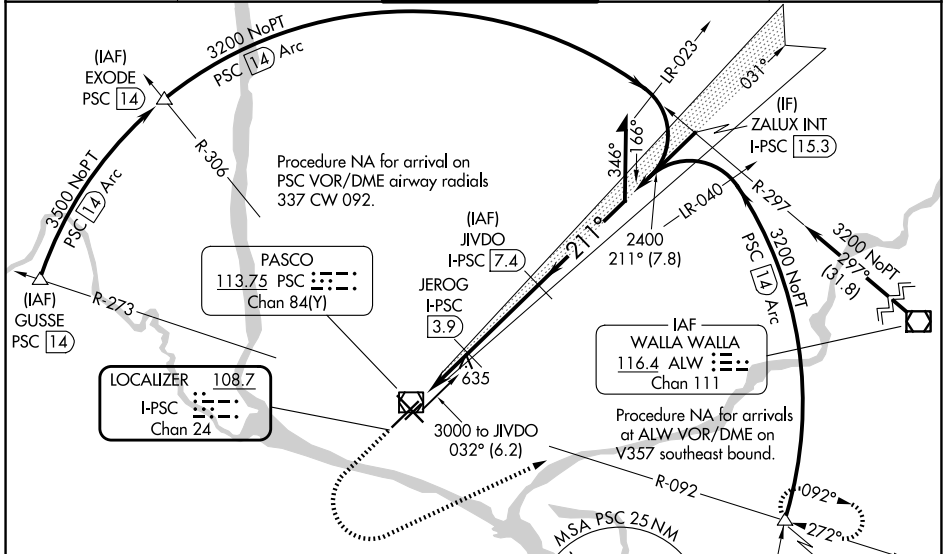
DME required for LOC only.  
DME required for procedure entry at GUSSE, EXODE, CITYS, PSC VOR/DME.

**▽** VDP NA when using Hermiston altimeter setting. For inop ALS when using Hermiston altimeter setting, increase S-ILS 21R all Cats visibility to RVR 4500, increase S-LOC 21R Cats C and D visibility to 1 3/4 SM. When local altimeter setting not received, use Hermiston altimeter setting: increase DA to 698 feet and all MDAs 100 feet; increase S-LOC 21R Cat C and D visibility 3/8 SM and Circling Cat C and D visibility 1/4 SM. \* RVR 1800 authorized with use of FD or AP or HUD to DA (NA when using Hermiston altimeter setting).

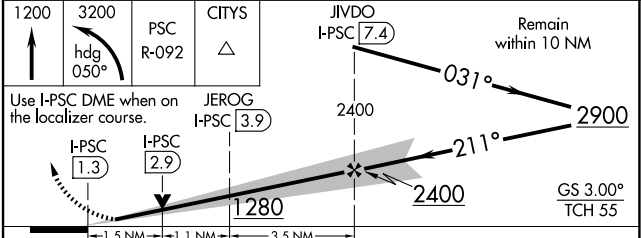
**MALSR**

**MISSED APPROACH:**  
Climb to 1200 then climbing left turn to 3200 on heading 050° and PSC VOR/DME R-092 to CITYS INT/PSC VOR/DME 14 DME and hold.

ATIS <b>125.65</b>	SPOKANE APP CON * <b>128.75 377.2</b>	<b>TRI-CITIES TOWER*</b> <b>135.3 (CTAF) 285.55</b>	GND CON <b>121.8</b>	UNICOM <b>122.95</b>
-----------------------	--	--	-------------------------	-------------------------



ELEV 410	<b>D</b>	TDZE 403
----------	----------	----------



CATEGORY	A	B	C	D
S-ILS 21R*	603/24 200 (200-1/2)			
S-LOC 21R	940/24	537 (600-1/2)	940/55	537 (600-1)
CIRCLING	940-1	530 (600-1)	1040-1 3/4 630 (700-1 3/4)	1100-2 1/4 690 (700-2 1/4)

NW-1, 11 JUN 2026 to 09 JUL 2026

NW-1, 11 JUN 2026 to 09 JUL 2026