

PERU, INDIANA

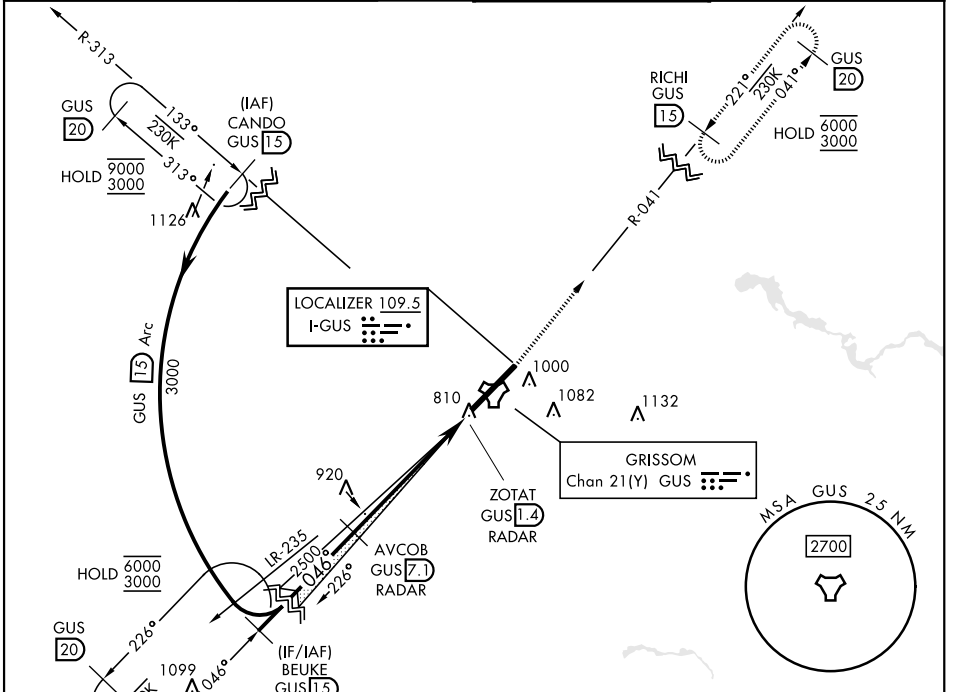
ILS or LOC RWY 5

LOC I-GUS 109.5	APCH CRS 046°	Rwy Idg 12,501 TDZE 811 Arprt Elev 811
---------------------------	-------------------------	---

[USAF]

GRISSOM ARB (KGUS)

RADAR, TACAN required * When ALS inop, increase RVR to 40 and vis to ¾ mile. ** When ALS inop, increase CAT AB RVR to 55 and vis to 1 mile; CAT CDE vis to 1¾ miles.		ALSF-1 	MISSED APPROACH: Climb to 3000 on the GUS TACAN R-041 to RICHI and hold. Missed approach requires use of RNAV or ATC RADAR monitoring.
ATIS 132.55 270.8	APP CON 121.05 351.8 (E) 123.85 291.675 (W)	TOWER ★ 133.7 290.45	GND CON 128.425 275.8



EC-2, 11 JUN 2026 to 09 JUL 2026

EC-2, 11 JUN 2026 to 09 JUL 2026

ELEV 811		TDZE 811				
EMERG SAFE ALT 100 NM 3500						
VGSI and ILS glidepath not coincident (VGSI Angle 2.50/TCH58). 						
CATEGORY S-ILS 5 * S-LOC 5 ** CIRCLING	A 1280/24 1340-1	B 469 (500-½) 529 (600-1)	C 200 589 (600-1½)	D 469 (500-1) 589 (600-2)	E (200-½) 1400-2 629 (700-2¼)	RICHI GUS R-041 (15) TWR 938 916 (P) 807 (A) 917 (A) 913 (A) 12.501 x 200 HIRL Rwy 5-23 FAF to MAP 5.7 NM Knots: 60, 90, 120, 150, 180 Min:Sec: 5:42, 3:48, 2:51, 2:17, 1:54

PERU, INDIANA

40°39'N-86°09'W

GRISSOM ARB (KGUS)

Amtd 9 11AUG22

ILS or LOC RWY 5