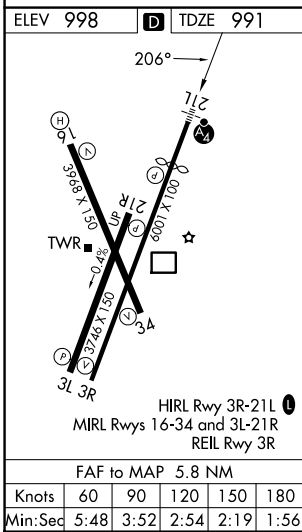
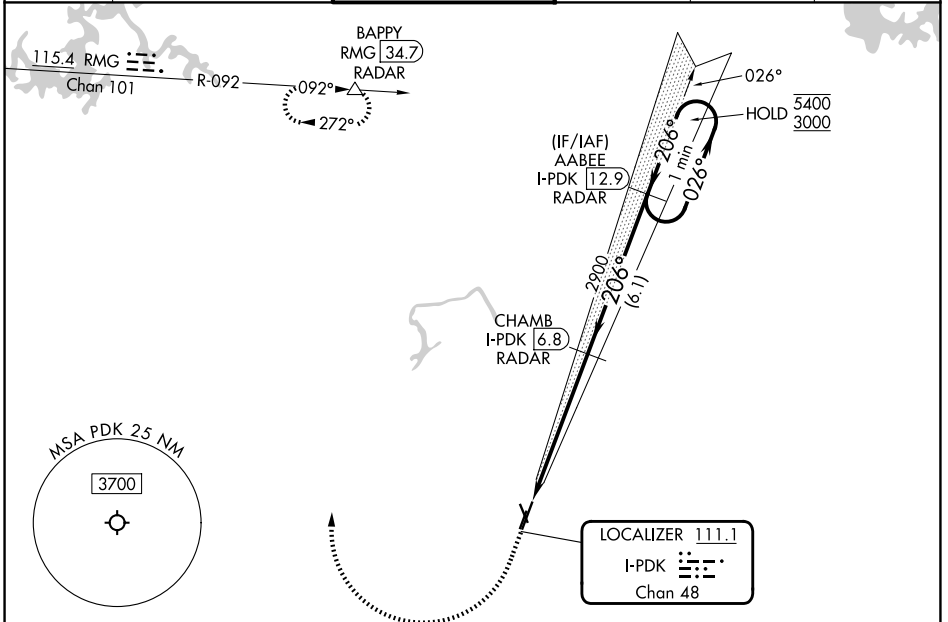


LOC/DME I-PDK 111.1 Chan 48	APP CRS 206°	Rwy Ldg TDZE 991 Apt Elev 998
--	------------------------	---

ILS or LOC RWY 21L

DEKALB-PEACHTREE (PDK)

RADAR required for procedure entry. DME or RADAR required.			MALSF	MISSED APPROACH: Climb to 1600 then climbing right turn to 4000 on heading 008° and on RMG VORTAC R-092 to BAPPY/RMG 34.7 DME/RADAR and hold.		
Circling Rwy 16, 34 NA at night. Rwy 21L helicopter visibility reduction below RVR 4000 NA.						
ATIS 128.4	ATLANTA APP CON 126.975 239.275	PEACHTREE TOWER ★ 120.9 (CTAF) 281.5	GND CON 121.6	UNICOM 122.95	120.0	



ELEV 998	D	TDZE 991			
1600	4000	RMG R-092	BAPPY	VGSI and ILS glidepath not coincident (VGSI Angle 3.00°/TCH 55).	One Minute Holding Pattern
		hdg 008°			
Glideslope unusable for coupled approach below 1900.			CHAMB I-PDK 6.8 RADAR	AABEE I-PDK 12.9 RADAR	
		2900	2900	2900	5400 / 3000
		1.5 NM	4.3 NM	6.1 NM	GS 3.00° TCH 58
CATEGORY	A	B	C	D	
S-ILS 21L	1330/40		339 (400-3/4)		
S-LOC 21L	1520/40	529 (600-3/4)		1520-1¼ 529 (600-1¼)	
CIRCLING	1520-1 522 (600-1)		1840-2½ 842 (900-2½)		2060-3 1062 (1100-3)

SE-4, 11 JUN 2026 to 09 JUL 2026

SE-4, 11 JUN 2026 to 09 JUL 2026