

LOC/DME I-YKM 110.1 Chan 38	APP CRS 274°	Rwy Ldg TDZE Apt Elev 7604 1068 1099
---	------------------------	--

ILS or LOC RWY 27

YAKIMA AIR TRML/MCALLISTER FLD (YKM)

DME required for procedure entry. DME required for LOC only.

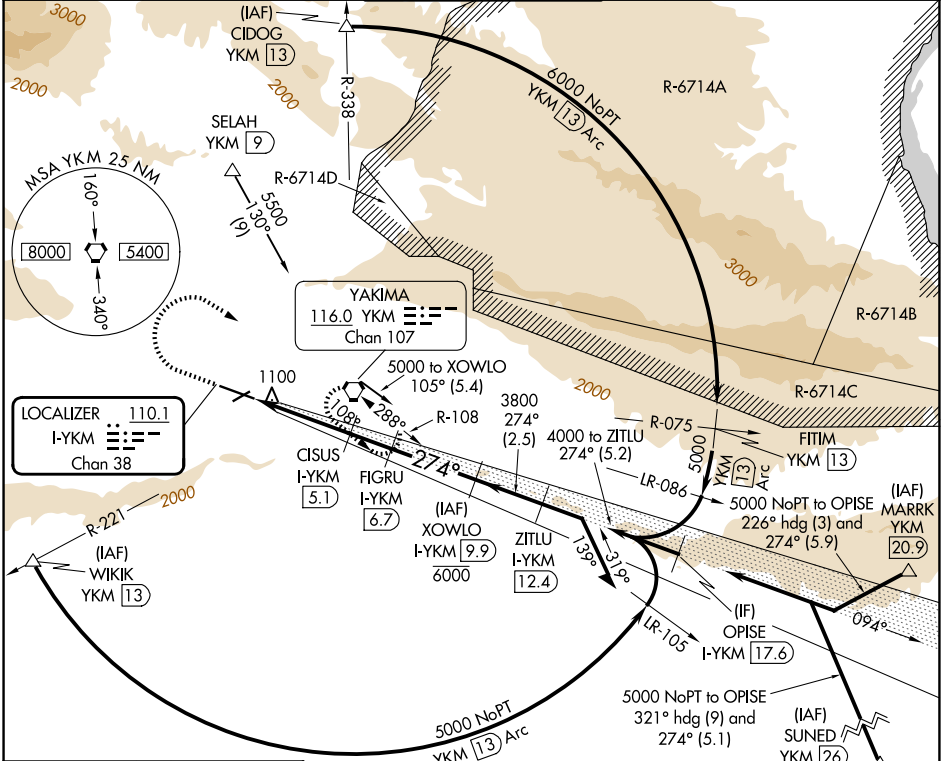
When local altimeter setting not received, procedure NA. Circling NA south of Rws 9 and 27. For inop ALS, increase S-LOC 27 Cats C/D visibility to 2 SM. For inop ALS, increase S-ILS 27 all Cats visibility to 1½ SM. #RVR 1800 authorized with use of FD or AP or HUD to DA.

MALSR

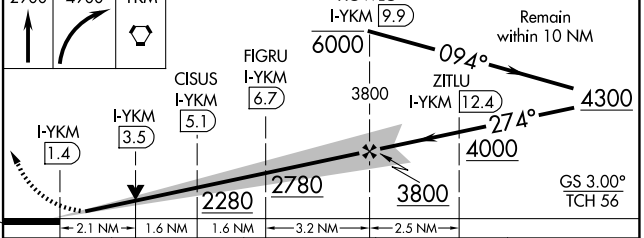
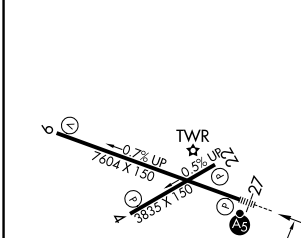


MISSED APPROACH: Climb to 2900 then climbing right turn to 4900 direct YKM. VORTAC and hold, continue climb-in-hold to 4900. # Missed approach requires minimum climb of 275 feet per NM to 3600.

ATIS 125.25	SPOKANE APP CON* 123.8 263.15	YAKIMA TOWER* 133.25 (CTAF) 0 257.8	GND CON 121.9	UNICOM 122.95
-----------------------	---	---	-------------------------	-------------------------



ELEV 1099	TDZE 1068
-----------	-----------



CATEGORY	A	B	C	D
S-ILS 27 #		1268/24	200 (200-½)	
S-ILS 27		1713-1⅓	645 (700-1⅓)	
S-LOC 27	1780/24	712 (700-½)	1780-1⅓	712 (700-1⅓)
CIRCLING	1780-1	681 (700-1)	1940-2½ 841 (900-2½)	2280-3 1181 (1200-3)

MIRL Rwy 4-22
HIRL Rwy 9-27
REIL Rws 4, 9, and 22

YAKIMA, WASHINGTON
Amdt 1B 06OCT22

YAKIMA AIR TRML/MCALLISTER FLD (YKM)
ILS or LOC RWY 27

46°34'N-120°33'W

NW-1, 11 JUN 2026 to 09 JUL 2026

NW-1, 11 JUN 2026 to 09 JUL 2026