

LOC I-INT 110.3	APP CRS 332°	Rwy Ldg 6655
		TDZE 941
		Apt Elev 969

ILS or LOC RWY 33

SMITH REYNOLDS (INT)

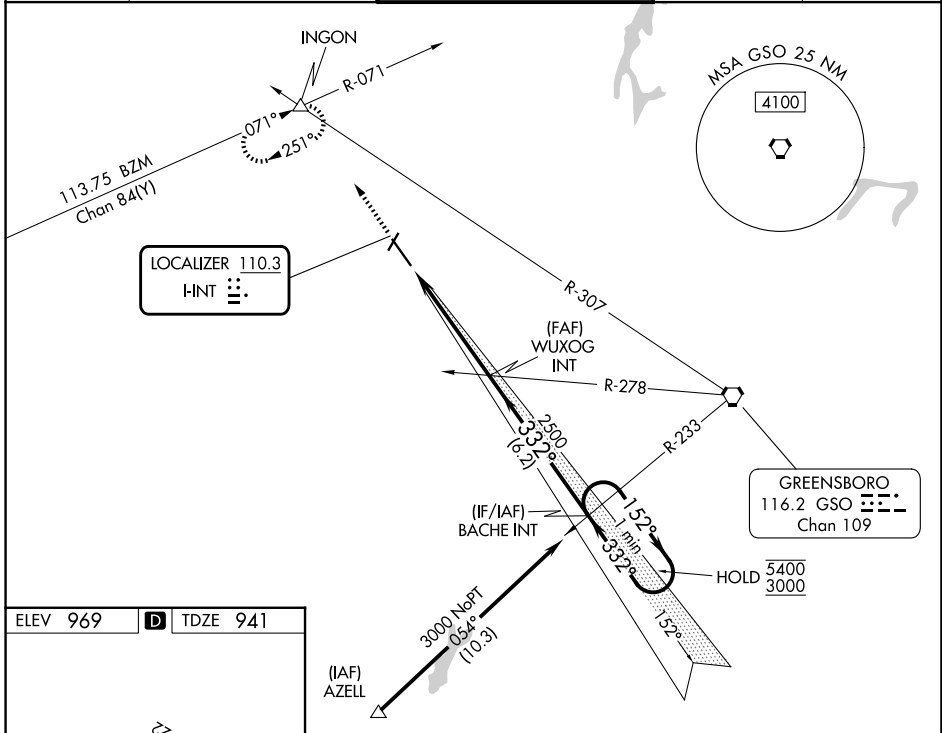
RNP APCH-GPS, From AZELL.
 RADAR required for non-GPS equipped aircraft.

⚠ *RVR 1800 authorized with use of FD or AP or HUD to DA.

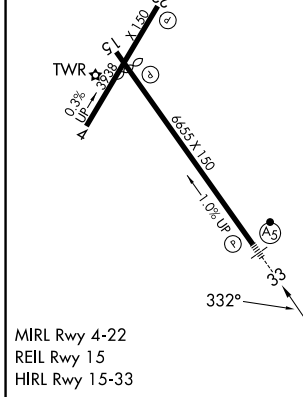
MALSR

MISSED APPROACH: Climb to 1400 then climbing right turn to 3500 on heading 341° and GSO VORTAC R-307 to INGON INT and hold, continue climb-in-hold to 3500.

ATIS 121.3	GREENSBORO APP CON 124.35 269.225	WINSTON-SALEM TOWER * 123.75 (CTAF) 257.8	GND CON 128.25	UNICOM 122.95
----------------------	---	---	--------------------------	-------------------------



ELEV 969	D	TDZE 941
----------	----------	----------



WINSTON SALEM, NORTH CAROLINA
 Amdt 30 05OCT23

1400	3500	INGON	One Minute Holding Pattern	
↑	hdg 341°	GSO R-307	WUXOG INT	BACHE INT
RW33		2500	2500	152° → 5400 ← 332° 3000
4.8 NM		6.2 NM		GS 3.00° TCH 57
CATEGORY	A	B	C	D
S-ILS 33*	1141/24		200 (200-½)	
S-LOC 33	1400/24	459 (500-½)	1400/45	459 (500-¾)
CIRCLING	1480-1 511 (600-1)	1580-1 611 (700-1)	1700-2 731 (800-2)	1760-2½ 791 (800-2½)

36°08'N-80°13'W

ILS or LOC RWY 33

SMITH REYNOLDS (INT)

SE-2, 11 JUN 2026 to 09 JUL 2026

SE-2, 11 JUN 2026 to 09 JUL 2026