


LOC I-ILG <b>110.3</b>	APP CRS <b>015°</b>	Rwy Ldg <b>7012</b> TDZE <b>76</b> Apt Elev <b>80</b>
---------------------------	------------------------	--

# ILS or LOC RWY 1

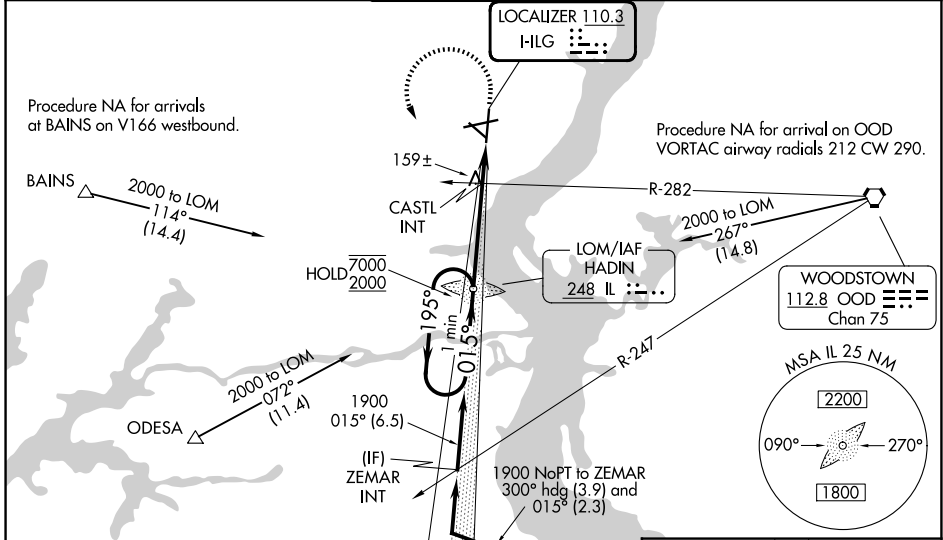
NEW CASTLE (ILG)

ADF required.  
RADAR required to define BLARE.

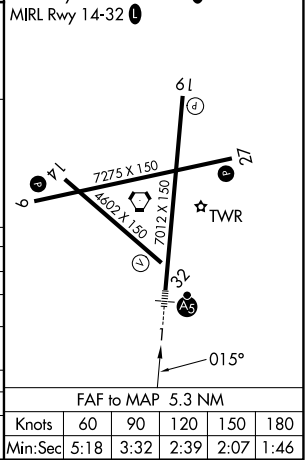
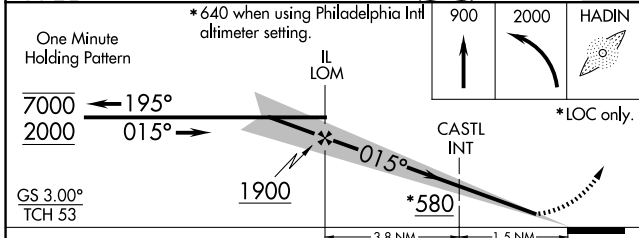
⚠ When local altimeter setting not received, use Philadelphia altimeter setting increase all DA to 330 feet and all MDA 60 feet; increase S-LOC 1 Cats C/D visibility to 1½ SM and Circling visibility Cat C to 1½ SM, Cat D to 2½ SM; increase CASTL fix minimums S-LOC 1 Cats C/D to 1½ SM for CASTL fix minimums and Circling Cat D to 2½ SM. For inop ALS increase S-LOC 1 Cat C/D to 1½ SM for CASTL fix minimums, increase S-LOC 1 Cats C/D visibility to 1½ SM. For inop ALS when using Philadelphia Intl altimeter setting, increase S-LOC 1 Cat C and D visibility to 1½ SM; CASTL fix minimums S-LOC 1 Cats C/D to 1½ SM. \*\*RVR 1800 authorized with use of FD or AP or HUD to DA (NA when using Philadelphia Intl altimeter setting).

MALSRL  
 MISSED APPROACH: Climb to 900 then climbing left turn to 2000 direct HADIN LOM and hold.

ATIS <b>123.95</b>	PHILADELPHIA APP CON <b>118.35 323.1</b>	WILMINGTON TOWER * <b>126.0 (CTAF) 352.05</b>	GND CON <b>121.7 275.8</b>	UNICOM <b>122.95</b>
-----------------------	---	--	-------------------------------	-------------------------



ELEV 80	TDZE 76
REIL Rwy 9, 19 and 27	
HIRL Rwy 1-19 and 9-27	
MIRL Rwy 14-32	



CATEGORY	A	B	C	D
S-ILS 1**	276/24 200 (200-½)			
S-LOC 1	580/24	504 (500-½)	580/55	504 (500-1)
CIRCLING	580-1	500 (500-1)	600-1½ 520 (600-1½)	800-2¼ 720 (800-2¼)
CASTL FIX MINIMUMS (DUAL VOR RECEIVERS REQUIRED)				
S-LOC 1	480/24	404 (400-½)	480/40	404 (400-¾)
CIRCLING	540-1 460 (500-1)	560-1 480 (500-1)	600-1½ 520 (600-1½)	800-2¼ 720 (800-2¼)

FAF to MAP 5.3 NM					
Knots	60	90	120	150	180
Min:Sec	5:18	3:32	2:39	2:07	1:46

NE-3, 11 JUN 2026 to 09 JUL 2026

NE-3, 11 JUN 2026 to 09 JUL 2026