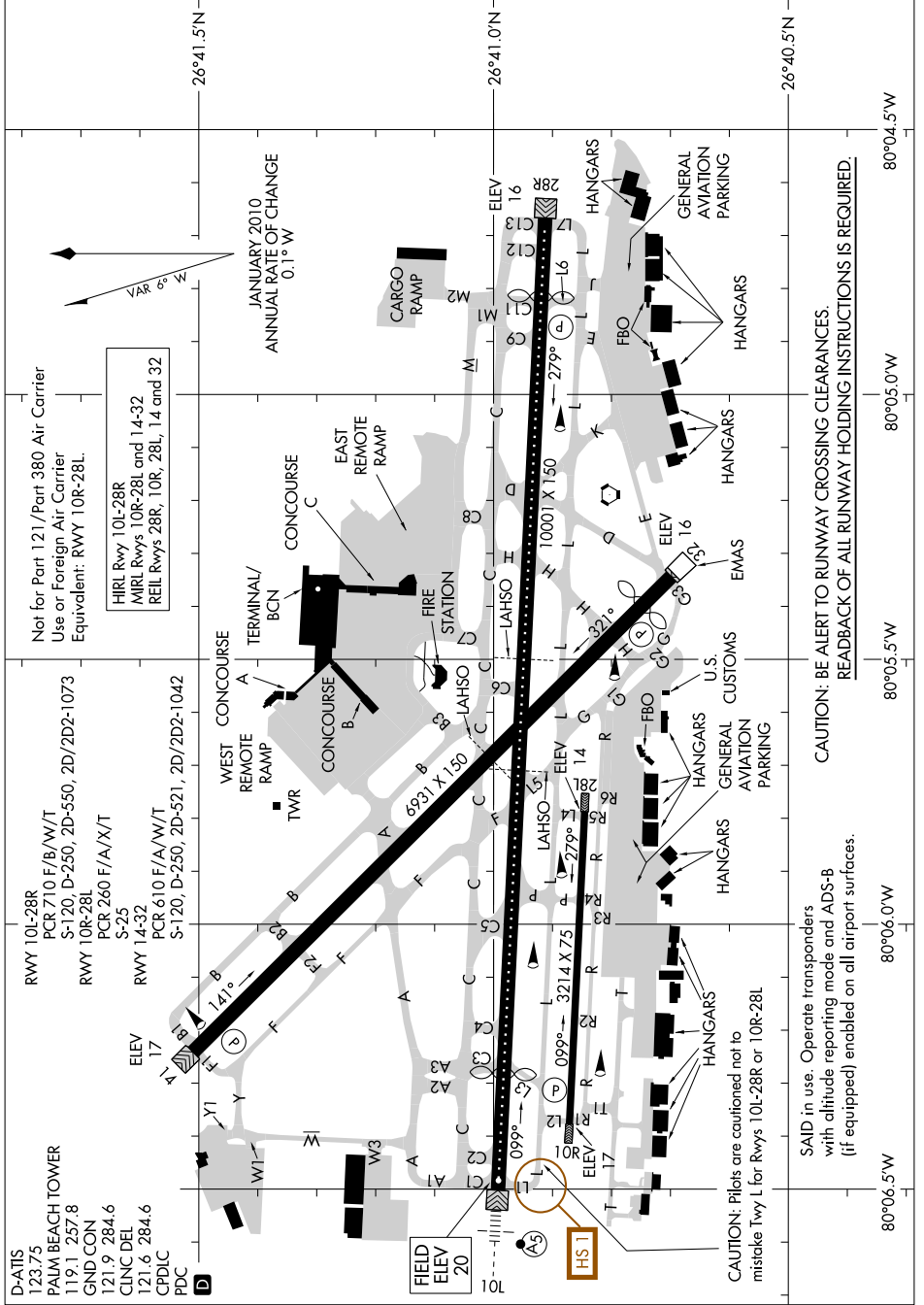


AIRPORT DIAGRAM

AL-449 (FAA)

PALM BEACH INTL (PBI)
WEST PALM BEACH, FLORIDA

SE-3, 11 JUN 2026 to 09 JUL 2026



Not for Part 121/Part 380 Air Carrier
Use or Foreign Air Carrier
Equivalent: RWY 10R-28L

HIRL Rwy 10L-28R
MIRL Rwys 10R-28L and 14-32
REIL Rwys 28R, 10R, 28L, 14 and 32

RWY 10L-28R
PCR 710 F/B/W/T
S-120, D-250, 2D-550, 2D/2D2-1073
RWY 10R-28L
PCR 260 F/A/X/T
S-25
RWY 14-32
PCR 610 F/A/W/T
S-120, D-250, 2D-521, 2D/2D2-1042

D-ATIS
123.75
PALM BEACH TOWER
119.1 257.8
GND CON
121.9 284.6
CLNC DEL
121.6 284.6
PDC

AIRPORT DIAGRAM

WEST PALM BEACH, FLORIDA
PALM BEACH INTL (PBI)

CAUTION: BE ALERT TO RUNWAY CROSSING CLEARANCES.
REARBACK OF ALL RUNWAY HOLDING INSTRUCTIONS IS REQUIRED.

CAUTION: Pilots are cautioned not to mistake Twy L for Rws 10L-28R or 10R-28L

SAID in use. Operate transponders with altitude reporting mode and ADS-B (if equipped) enabled on all airport surfaces.

80°06.5'W 80°06.0'W 80°05.5'W 80°05.0'W 80°04.5'W

SE-3, 11 JUN 2026 to 09 JUL 2026