

# AIRPORT DIAGRAM

AL-443 (FAA)

D-ATIS  
132.65  
WASHINGTON TOWER  
119.1 257.6  
121.275 (HELICOPTERS)  
GND CON  
121.7 257.6  
CLNC DEL  
128.25  
CPDLC  
PDC

CAUTION: BE ALERT TO RUNWAY CROSSING CLEARANCES.

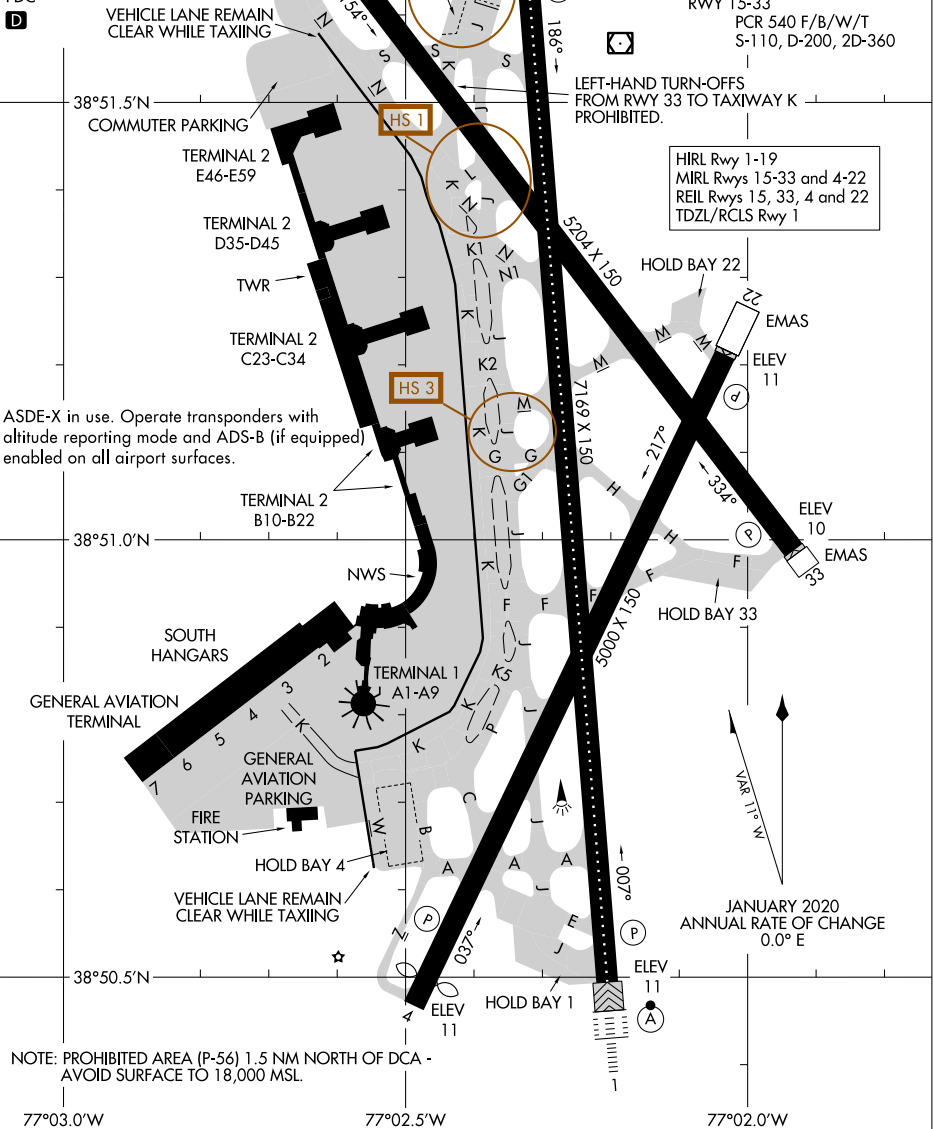
READBACK OF ALL RUNWAY HOLDING INSTRUCTIONS IS REQUIRED.

FIELD ELEV
14

RWY 01-19  
PCR 580 F/B/W/T  
S-110, D-200, 2D-360

RWY 04-22  
PCR 420 F/B/W/T  
S-110, D-200, 2D-360

RWY 15-33  
PCR 540 F/B/W/T  
S-110, D-200, 2D-360



LEFT-HAND TURN-OFFS FROM RWY 33 TO TAXIWAY K PROHIBITED.

HIRL Rwy 1-19  
MIRL Rwys 15-33 and 4-22  
REIL Rwys 15, 33, 4 and 22  
TDZL/RCLS Rwy 1

ASDE-X in use. Operate transponders with altitude reporting mode and ADS-B (if equipped) enabled on all airport surfaces.

JANUARY 2020 ANNUAL RATE OF CHANGE 0.0° E

NOTE: PROHIBITED AREA (P-56) 1.5 NM NORTH OF DCA - AVOID SURFACE TO 18,000 MSL.

NE-3, 11 JUN 2026 to 09 JUL 2026

NE-3, 11 JUN 2026 to 09 JUL 2026

# AIRPORT DIAGRAM