

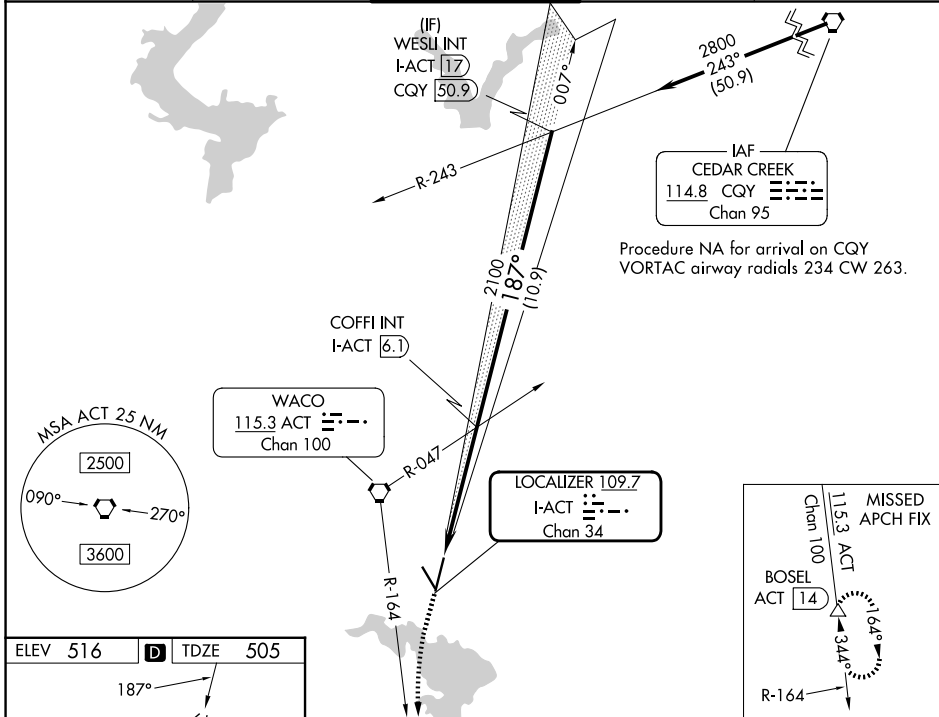
LOC/DME I-ACT 109.7 Chan 34	APP CRS 187°	Rwy Ldg TDZE Apt Elev	6605 505 516
--	------------------------	-----------------------------	---

ILS or LOC RWY 19

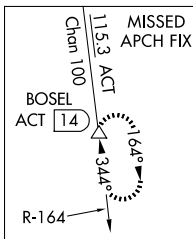
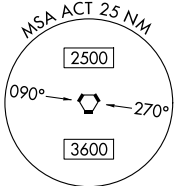
WACO RGNL (ACT)

DME required.		MALS/R	MISSED APPROACH: Climb to 1500 then climbing left turn to 4000 on ACT VORTAC R-164 to BOSEL 14 DME and hold, continue climb-in-hold to 4000.
<p>** RVR 1800 authorized with use of FD or AP or HUD to DA.</p>			
ASR			

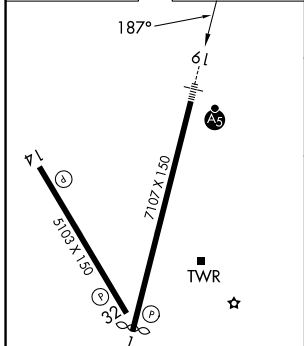
ATIS 123.85	WACO APP CON ★ 127.65 227.125	WACO TOWER ★ 119.3 (CTAF) 0 257.8	GND CON 121.9	UNICOM 122.95
-----------------------	---	---	-------------------------	-------------------------



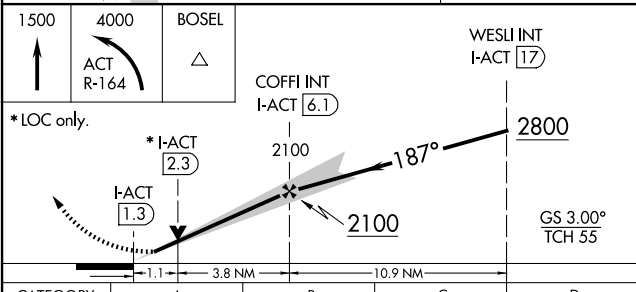
Procedure NA for arrival on CQY VORTAC airway radials 234 CW 263.



ELEV 516	D	TDZE 505
----------	----------	----------



REIL Rwy 14	HIRL Rwy 1-19	MIRL Rwy 14-32			
FAF to MAP 4.9 NM					
Knots	60	90	120	150	180
Min:Sec	4:54	3:16	2:27	1:58	1:38



CATEGORY	A	B	C	D
S-ILS 19**	705/24 200 (200-½)			
S-LOC 19	900/24	395 (400-½)	900/35	395 (400-¾)
CIRCLING	940-1 424 (500-1)	980-1 464 (500-1)	1020-1½ 504 (600-1½)	1160-2 644 (700-2)

SC-3, 11 JUN 2026 to 09 JUL 2026

SC-3, 11 JUN 2026 to 09 JUL 2026