

LOC/DME I-TYK <b>110.7</b> Chan <b>44</b>	APP CRS <b>099°</b>	Rwy Ldg TDZE Apt Elev	<b>7016</b> <b>624</b> <b>624</b>
---	------------------------	-----------------------------	---

# ILS or LOC RWY 10

CHERRY CAPITAL (TVC)

RNP APCH - GPS. From BABBE, or IROTO, or FEPEX, or CUBKO.  
DME required.

Rwy 10 helicopter visibility reduction below 3/4 SM NA.  
For inop ALS, increase S-LS 10 all Cats visibility to 7/8 SM.

-21°C

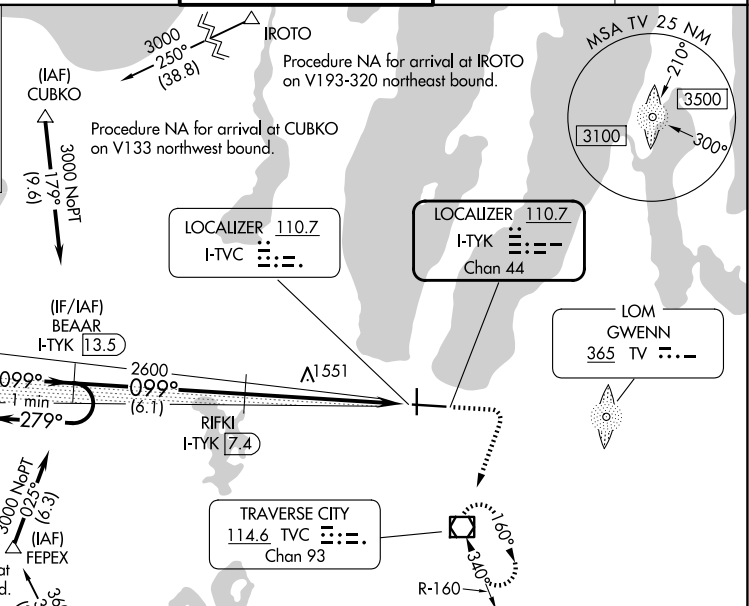
MALSR

MISSED APPROACH: Climb to 1400 then climbing right turn to 4000 direct TVC VOR/DME and hold, continue climb-in-hold to 4000.

ATIS <b>119.175</b>	MINNEAPOLIS CENTER <b>132.9 338.3</b>	TRAVERSE CITY TOWER* <b>124.2 (CTAF) 348.6</b>	GND CON <b>121.8 348.6</b>	UNICOM <b>122.95</b>
------------------------	--	---	-------------------------------	-------------------------

ALTERNATE MISSED APCH FIX

GWENN  
365 TV ---



One Minute Holding Pattern BEAAR I-TYK 13.5

VGSI and ILS glidepath not coincident (VGSI Angle 3.00/TCH 55).

5100 ← 279° → 3000

GS 3.00° TCH 60

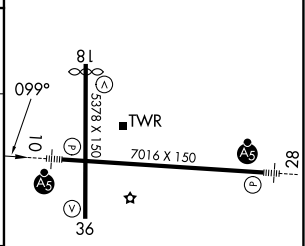
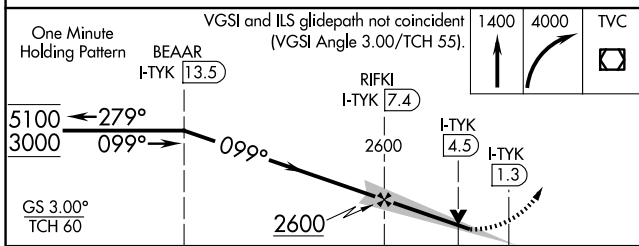
2600

6.1 NM

2.8 NM

3.2 NM

ELEV 624	TDZE 624
----------	----------



CATEGORY	A	B	C	D
S-LS 10	917-3/4 293 (300-3/4)			
S-LOC 10	1700-3/4 1076 (1100-3/4)	1700-1 1076 (1100-1)	1700-2 1/2 1076 (1100-2 1/2)	1076 (1100-2 1/2)
CIRCLING	1700-1 1/4 1076 (1100-1 1/4)	1700-1 1/2 1076 (1100-1 1/2)	1700-3 1076 (1100-3)	1720-3 1096 (1100-3)

HIRL Rwy 10-28

MIRL Rwy 18-36

EC-1, 11 JUN 2026 to 09 JUL 2026

EC-1, 11 JUN 2026 to 09 JUL 2026