

# HI-TACAN RWY 13

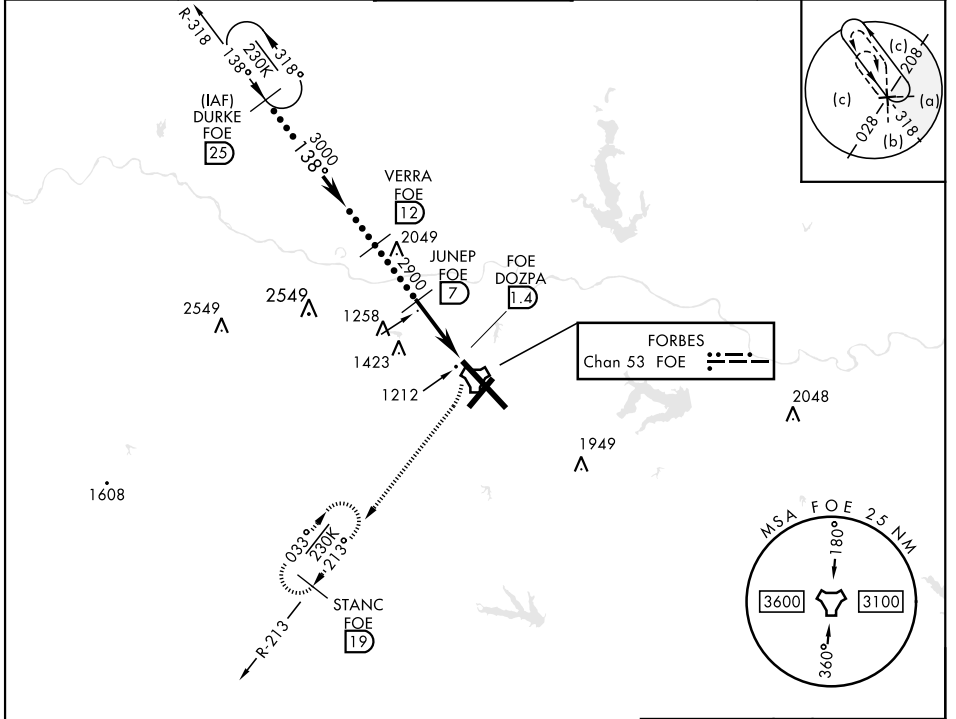
TACAN Chan <b>53</b>	FOE	APCH CRS <b>138°</b>	Rwy ldg <b>12,803</b> TDZE <b>1066</b> Arprt Elev <b>1078</b>
----------------------	-----	----------------------	---

[USAF]

TOPEKA RGNL (KFOE)

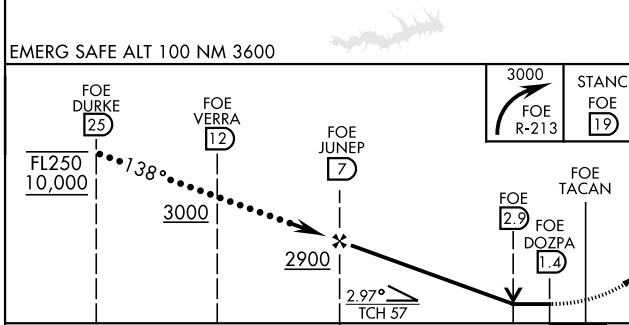
	MALSF	MISSED APPROACH: Climbing right turn to 3000 via FOE TACAN R-213 to STANC/19 DME and hold.

ATIS <b>128.25</b>	KANSAS CITY CENTER <b>123.8 343.7</b>	FORBES TOWER ★ <b>120.8 (CTAF) 340.2</b>	GND CON <b>118.425 275.8</b>	UNICOM <b>122.95</b>
-----------------------	--	---	---------------------------------	-------------------------



NC-2, 11 JUN 2026 to 09 JUL 2026

NC-2, 11 JUN 2026 to 09 JUL 2026



EMERG SAFE ALT 100 NM 3600			
	FL250 10,000	3000	2900
			5.6 NM
CATEGORY	C	D	E
S-13	1600-1½	534 (600-1½)	
CIRCLING	1600-1½ 522 (600-1½)	1700-2 622 (700-2)	1720-2¼ 642 (700-2¼)

ELEV 1078	TDZE 1066
-----------	-----------

Rwy 3 ldg 7001'  
Rwy 21 ldg 7001'

MIRL Rwy 3-21  
REIL Rwy 3, 13, and 21  
HIRL Rwy 13-31

# HI-TACAN RWY 13